

5795 Gianna Drive

TIMNATH, CO 80547



PRICE

\$947,582

PLAN

Plan 3

LOCATION

Kitchel Lake at Serratoga Falls

FEATURES

 4 Bedrooms

 3 Ba

 2,768 Sq. Ft.

 4 Car Garage

Homesite 7 at Kitchel Lake showcases a striking contemporary elevation and includes a spacious 4-car tandem garage at the front of the home. This expansive two-story layout offers 2,768 square feet of thoughtfully designed living space. Upon entering, you're greeted by a grand entry hall that leads into a gourmet kitchen equipped with 42-inch deluxe soft-close cabinetry, quartz countertops with a stylish tile backsplash, and a stainless steel appliance package that includes a 5-burner gas cooktop, convection oven, built-in microwave, and dishwasher. The kitchen seamlessly connects to a cozy pocket office and a covered outdoor room, ideal for both work and relaxation.

Upstairs, a versatile bonus room provides the perfect space for reading, gaming, or watching TV. Two secondary bedrooms are connected by a shared ensuite bathroom with dual sinks, offering both privacy and convenience. Down the hall, the primary suite is a peaceful retreat featuring a spa-inspired bathroom with a walk-in shower and an expansive walk-in closet.

The home is finished with the Autumn Plus design package, which includes extensive luxury vinyl plank flooring throughout the main areas, plush carpet in the bedrooms, and contemporary bath fixtures. Additional highlights include quartz countertops throughout the home, a tankless water heater, air conditioning for year-round comfort, and an unfinished walkout basement that offers room to grow. Situated on a desirable corner lot backing to open space, this home blends luxury and functionality in an exceptional setting.

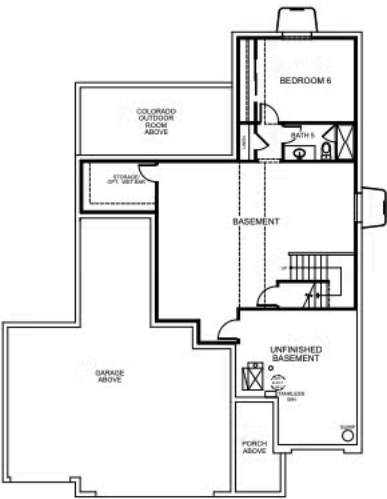
KITCHEL LAKE PLAN 3 FLOOR PLAN




PLAN 3 - OPTIONS

4 - 6 Bedrooms • 3 - 4 Baths • 4-Car Garage (Tandem)
2,768 - 3,733 Finished Sq. Ft.


PRELIMINARY



BASEMENT OPTION 3



VIP-KITCHEL.COM

All information is for reference only. Prices, taxes and specifications subject to change and should be verified by all potential homebuyers. This is not an offer to sell but is intended for information only. The developer reserves the right to make modifications in materials, specifications, plans, pricing, various fees, designs, scheduling and delivery of homes without prior notice. All dimensions and square footages are approximate. Plan and dimensions may contain minor variations from floor to floor. CA DRE license no. 01877720. 

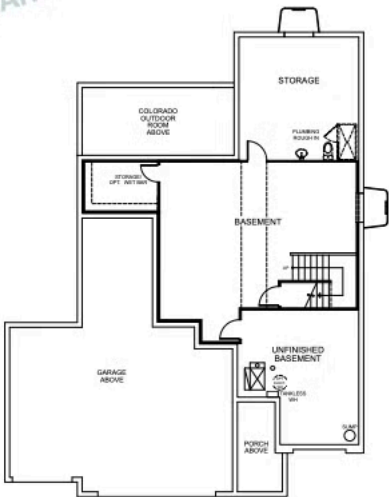
KITCHEL LAKE PLAN 3 FLOOR PLAN



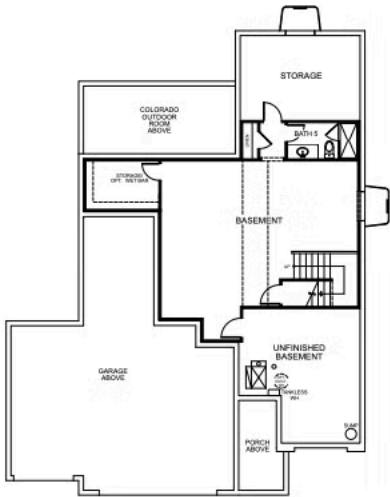
PLAN 3 - OPTIONS

4 - 6 Bedrooms • 3 - 4 Baths • 4-Car Garage (Tandem)
2,768 - 3,733 Finished Sq. Ft.


PRELIMINARY




BASEMENT OPTION 1



BASEMENT OPTION 2



VIP-KITCHEL.COM

All information is for reference only. Prices, taxes and specifications subject to change and should be verified by all potential homebuyers. This is not an offer to sell but is intended for information only. The developer reserves the right to make modifications in materials, specifications, plans, pricing, various fees, designs, scheduling and delivery of homes without prior notice. All dimensions and square footages are approximate. Plan and dimensions may contain minor variations from floor to floor. CA DRE license no. 01877720. 

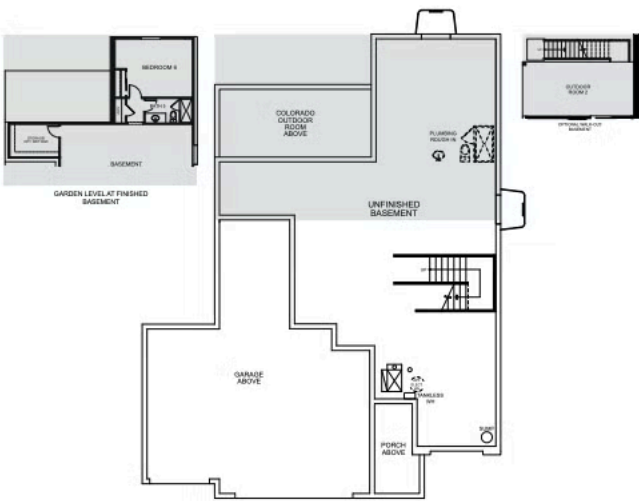
KITCHEL LAKE PLAN 3 FLOOR PLAN




PLAN 3 - OPTIONS

4 - 6 Bedrooms • 3 - 4 Baths • 4-Car Garage (Tandem)
2,768 - 3,733 Finished Sq. Ft.


PRELIMINARY



BASEMENT



VIP-KITCHEL.COM

All information is for reference only. Prices, taxes and specifications subject to change and should be verified by all potential homebuyers. This is not an offer to sell but is intended for information only. The developer reserves the right to make modifications in materials, specifications, plans, pricing, various fees, designs, scheduling and delivery of homes without prior notice. All dimensions and square footages are approximate. Plan and dimensions may contain minor variations from floor to floor. CA DRE license no. 01877720. 

TRUMARK**HOMES**

5795 Gianna Drive

TIMNATH, CO 80547

GET IN TOUCH
(970) 499-8222

KITCHEL LAKE PLAN 3 FLOOR PLAN



TRUMARK**HOMES**

5795 Gianna Drive

TIMNATH, CO 80547

GET IN TOUCH
(970) 499-8222

KITCHEL LAKE PLAN 3 FLOOR PLAN



TRUMARKHOMES

5795 Gianna Drive

TIMNATH, CO 80547

GET IN TOUCH
(970) 499-8222

KITCHEL LAKE PLAN 3 FLOOR PLAN



TRUMARK**HOMES**

5795 Gianna Drive

TIMNATH, CO 80547

GET IN TOUCH
(970) 499-8222



TRUMARK**HOMES**

5795 Gianna Drive

TIMNATH, CO 80547

GET IN TOUCH
(970) 499-8222



TRUMARK**HOMES**

5795 Gianna Drive

TIMNATH, CO 80547

GET IN TOUCH
(970) 499-8222

