

1301 Weller Street

TIMNATH, CO 80547



PRICE

\$844,616

PLAN

Plan 1

LOCATION

Kitchel Lake at Serratoga Falls

FEATURES

-  4 Bedrooms
-  3 Ba, 1 Half Ba
-  3,200 Sq. Ft.
-  3 Car Garage

Homesite 1 at Kitchel Lake is a contemporary single-story home on a desirable corner lot, offering 3,200 finished square feet of thoughtfully designed living space. Past the welcoming entry hall, the gourmet kitchen features 42" maple cabinetry, quartz countertops with a tile backsplash, stainless steel appliances, and a walk-in pantry. The spacious great room highlights a stunning floor-to-ceiling tiled fireplace and flows seamlessly to the covered outdoor room, creating the perfect setting for everyday living and entertaining. The primary suite offers a true retreat with a spa-inspired bath, including dual sinks, a walk-in shower, and a freestanding tub. The finished walkout basement expands the home's versatility with an additional bedroom, bathroom, and media room.

This home features the Diana Plus design finish package, bringing elevated style and comfort throughout. Highlights include extensive luxury vinyl plank flooring, plush carpet in bedrooms, contemporary bath fixtures, quartz countertops, a tankless water heater, air conditioning, and much more. Every detail is crafted for both modern convenience and timeless appeal.

Key features include: a corner lot backing to open space, an oversized 3-car garage, a gourmet kitchen with soft-close cabinetry, and a spa-like primary bath with a freestanding tub. With 4 bedrooms, 3.5 bathrooms, and flexible living areas, Homesite 1 at Kitchel Lake is designed to fit a variety of lifestyles while offering unmatched comfort and elegance.

1301 Weller Street

TIMNATH, CO 80547



PLAN 1 - ELEVATIONS

3 – 5 Bedrooms • 2.5 – 3.5 Baths • 3-Car Garage
Approx. 2,016 - 3,200 Finished Sq. Ft.



Elevation 1A - Modern Farmhouse



Elevation 1B - Modern Prairie



Elevation 1C - Modern Mountain

970.450.5504 | KitcheLakeSales@trumarkco.com | 1432 Alyssa Drive, Timnath, CO 80547 | VIP-KITCHEL.COM

TRUMARKHOMES

This is not an offer to sell but is intended for information only. Trumark Homes reserves the right to make modifications to materials, specifications, brand names, appliances, fixtures, plans, pricing, various fees, designs, scheduling, and delivery of homes without prior notice. Square footages are approximate. Plans and dimensions may contain minor variations from floor to floor. Floor plans are for representational purposes only. Homes shown do not represent actual homesites. Rendering and photographs are artists' conceptions and do not reflect actual homesites. Models do not display racial preference. Updated 03/27/2025. 🏡

1301 Weller Street

TIMNATH, CO 80547

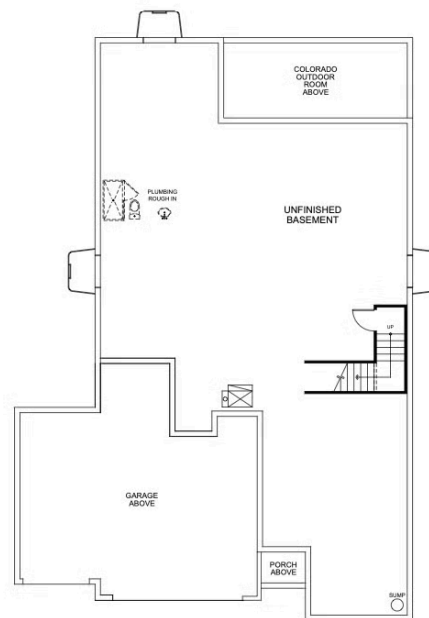


PLAN 1

3 – 5 Bedrooms • 2.5 – 3.5 Baths • 3-Car Garage
Approx. 2,016 - 3,200 Finished Sq. Ft.



FIRST FLOOR



BASEMENT

970.450.5504 | KitchelLakeSales@trumarkco.com | 1432 Alyssa Drive, Timnath, CO 80547 | VIP-KITCHEL.COM

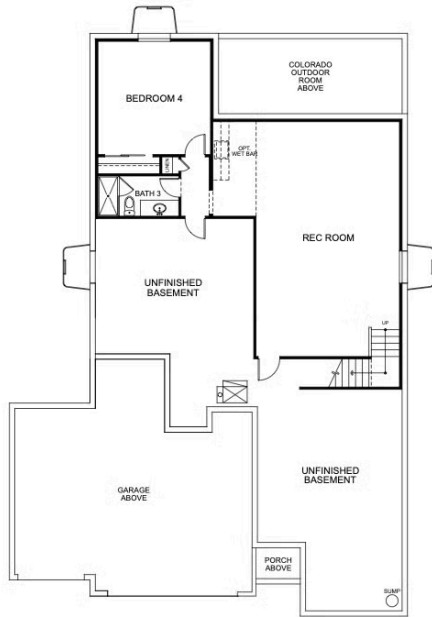
TRUMARKHOMES

This is not an offer to sell but is intended for information only. Trumark Homes reserves the right to make modifications to materials, specifications, brand names, appliances, fixtures, plans, pricing, various fees, designs, scheduling, and delivery of homes without prior notice. Square footages are approximate. Plans and dimensions may contain minor variations from floor to floor. Floor plans are for representational purposes only. Homes shown do not represent actual homesites. Rendering and photographs are artists' conceptions and do not reflect actual homesites. Models do not display racial preference. Updated 03/27/2025.

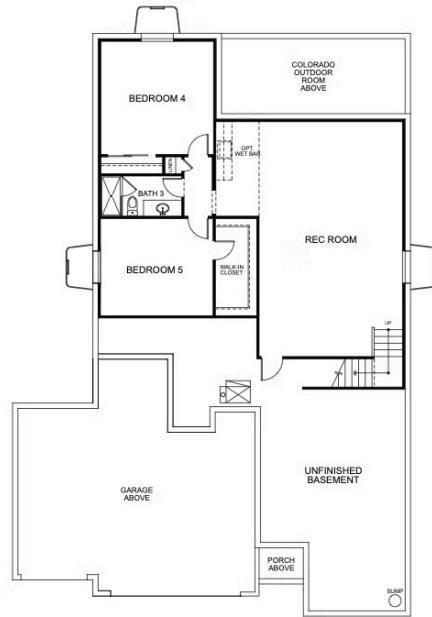


PLAN 1 - BASEMENT OPTIONS

3 – 5 Bedrooms • 2.5 – 3.5 Baths • 3-Car Garage
Approx. 2,016 - 3,200 Finished Sq. Ft.



OPTIONAL FINISHED BASEMENT



OPTIONAL FINISHED BASEMENT
WITH BEDROOM 5

970.450.5504 | KitcheLakeSales@trumarkco.com | 1432 Alyssa Drive, Timnath, CO 80547 | VIP-KITCHEL.COM

TRUMARKHOMES

This is not an offer to sell but is intended for information only. Trumark Homes reserves the right to make modifications to materials, specifications, brand names, appliances, fixtures, plans, pricing, various fees, designs, scheduling, and delivery of homes without prior notice. Square footages are approximate. Plans and dimensions may contain minor variations from floor to floor. Floor plans are for representational purposes only. Homes shown do not represent actual homesites. Rendering and photographs are artists' conceptions and do not reflect actual homesites. Models do not display racial preference. Updated 03/27/2025.