



CENTERHOUSE

A PLACE TO
GATHER

A PLACE TO
DREAM

A PLACE TO
CALL HOME

Founded in 1988 by Michael Maples and Gregg Nelson, the Trumark Group of Companies is a multidisciplinary real estate developer with expertise in homebuilding, land acquisition, entitlements, master-planned community development, office and retail. Focused on award-winning design and flawless execution, Trumark has entitled over 5,000 residential lots and ranks as one of the top private builders in the nation.

In 2008 Trumark formally launched Trumark Homes, a visionary, next-generation homebuilder specializing in new residential development throughout California. With an emphasis on building homes with memorable architecture in thriving locations, the company has been nationally recognized for excellence in design, receiving esteemed awards across multiple new home communities. Innovative, distinctive and true to its vision, Trumark Homes adds value with each new home community it creates, offering residents a place to gather, a place to dream and a place to call home.



charity: water LIVE WELL

Trumark Homes is dedicated to creating communities that foster an enthusiasm to connect, the strength to aspire and the compassion to give back. And that's why we choose to partner with charity: water, a non-profit organization bringing clean and safe drinking water to people in developing nations.

Clean water is the most essential resource on the planet, yet for 663 million individuals across the globe it is the rarest. After witnessing first-hand the immense need for potable water in African villages, Trumark co-founders Michael Maples and Gregg Nelson were determined to help end the water crisis in the most disadvantaged areas of the world.

Through our partnership with charity: water, Trumark has committed, for approximately every 50 homes we build, to donate a new well that brings clean, safe drinking water where it's needed most, easing the daily struggle and supporting growing economies. To date, Trumark's contributions have improved the lives of over 4,500 underserved people.



FEATURES & AMENITIES

IMPRESSIVE INTERIORS

- Shaker-style cabinetry in **three** color choices
- Welcoming 12" x 12" Daltile® ceramic tile at entry in four color choices
- Quality Mohawk® carpet in **six** color choices in living room, dining room, bedrooms, halls, closets and stairs
- Mohawk® vinyl flooring in ten color choices in kitchen, bathrooms and laundry
- Energy-efficient contemporary recessed LED lighting
- 2-1/4" baseboards and 2-1/4" wood casing

CULINARY RETREAT

- Premium stainless steel kitchen appliances:
 - GE® stainless steel 30" four-burner gas freestanding range/oven
 - GE® stainless steel microwave/hood combination
 - GE® stainless steel dishwasher
- Shaker-style cabinetry in **three** color choices
- Granite countertops in **two** color choices with full-height backsplash at cooktop (6" backsplash everywhere else)
- Energy-efficient contemporary recessed LED lighting
- Deep stainless steel, single-bowl, undermount sink with Moen® pull-down stainless steel faucet

LUXURIOUS MASTER SUITE

- Shaker-style cabinetry in **three** color choices
- Fiberglass tub and shower surrounds
- Beautiful matte-finish cultured marble countertops with 4" backsplash and integral rectangular sink
- Enhancing 36" mirror with beveled edges
- Moen® faucets and showerhead in attractive polished chrome finish

WELCOMING BATHROOMS

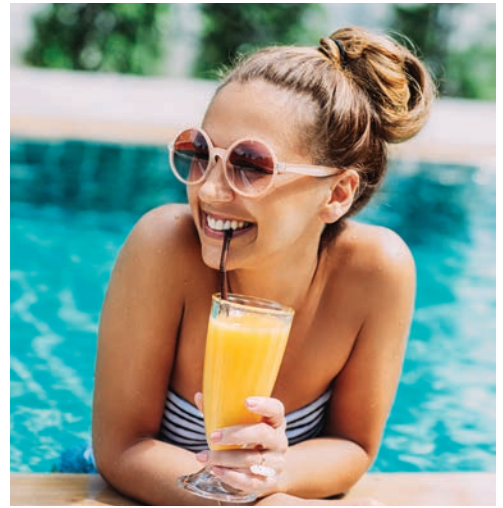
- Shaker-style cabinetry in **three** color choices
- Fiberglass tub and shower surrounds in all secondary baths
- Beautiful matte-finish cultured marble countertops with 4" backsplash and integral rectangular sink in secondary baths and powder
- Enhancing 36" mirror with beveled edges in secondary baths and powder
- Moen® faucet and showerhead in attractive polished chrome finish in secondary baths

EXTRA INCLUDED FEATURES

- Ample pre-wiring throughout:
 - Universal multimedia pre-wiring in living room
 - Additional phone pre-wiring in kitchen and master bedroom
 - Cable pre-wiring in secondary bedrooms
 - Pre-wired USB outlet in kitchen and master bedroom
- Honeywell® Wi-Fi programmable thermostat
- Low-E glass vinyl-framed windows throughout
- Therma-Tru® fiberglass solid-core entry door with quality Kwikset® door hardware
- Wayne Dalton® steel garage door and Genie® garage door opener with two remotes
- Rinnai® tankless water heater
- 14 SEER high-efficiency A/C condenser



D
E
F
A
T
S



6-PLEX



3-PLEX

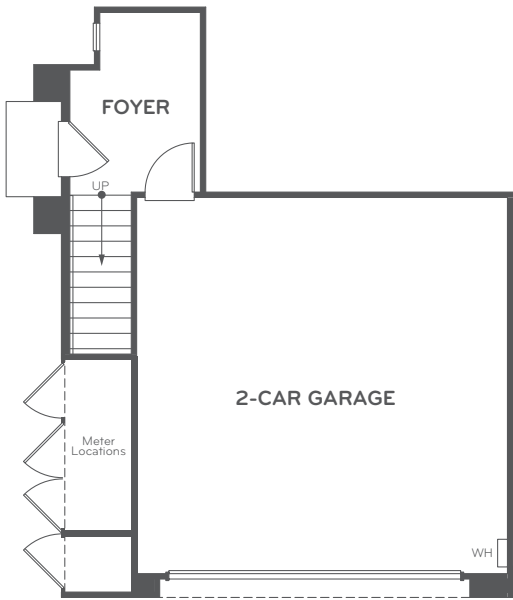
Be the center of attention. Make connections and thrive. Cruise through the vibrant hum of life at Centerhouse, where life's endless possibilities revolve around you. Here in Ontario, adventure awaits right outside your doorstep – whether you're diving into the community pool, taking a stroll to hot dining spots or hopping on a nearby freeway. Bold, bright and bustling, Centerhouse is where life comes full circle. And where convenience and neighborly living find perfect balance.



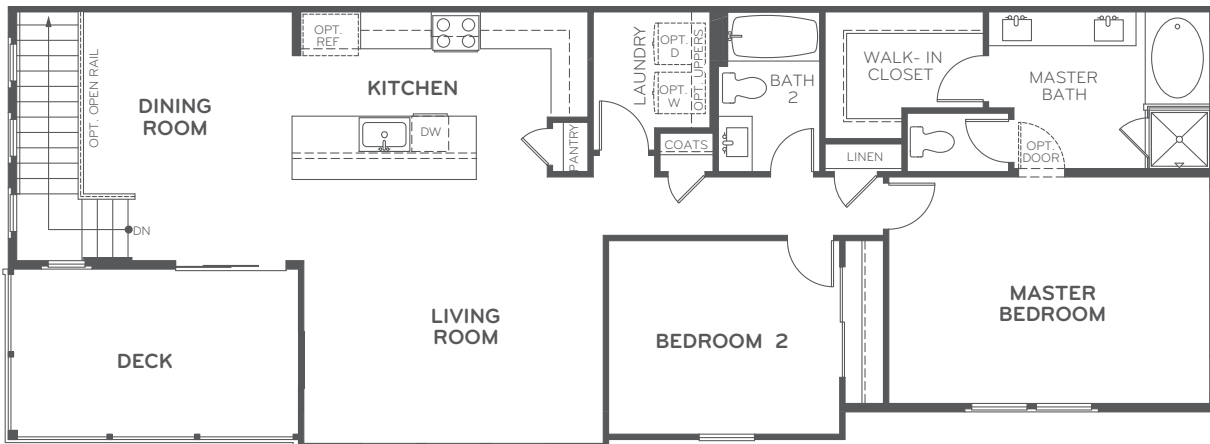
CENTERHOUSE

1R

Approximately 1,430 Sq. Ft.
2 Bedrooms • 2 Bathrooms
2-Car Garage
Reversed Floor Plan Modeled



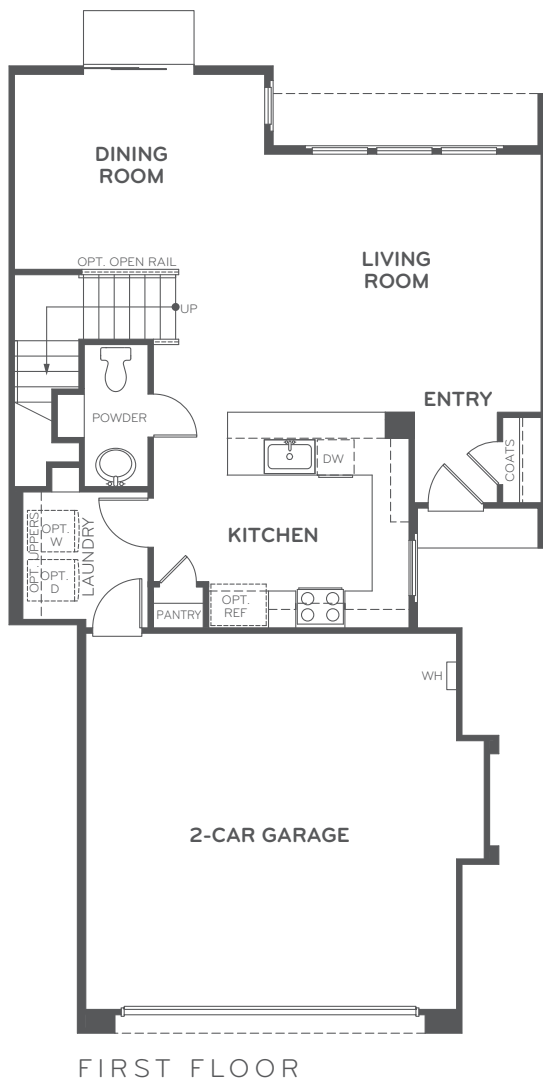
FIRST FLOOR



SECOND FLOOR

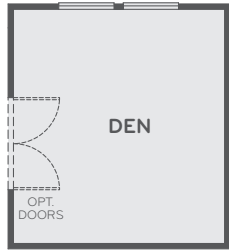
2R

Approximately 1,554 Sq. Ft.
3 Bedrooms • 2.5 Bathrooms
TruFlex Loft at Bedroom 3
2-Car Garage
Reversed Floor Plan Modeled

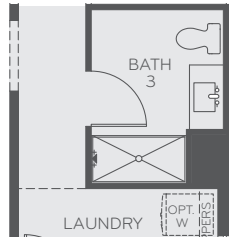


3R

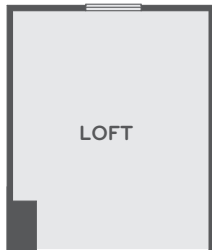
Approximately 1,946 Sq. Ft.
 4 Bedrooms • 3 Bathrooms
 TruFlex Loft at Bedroom 3 • Opt. Den at Bedroom 4
 2-Car Garage
Reversed Floor Plan Modeled



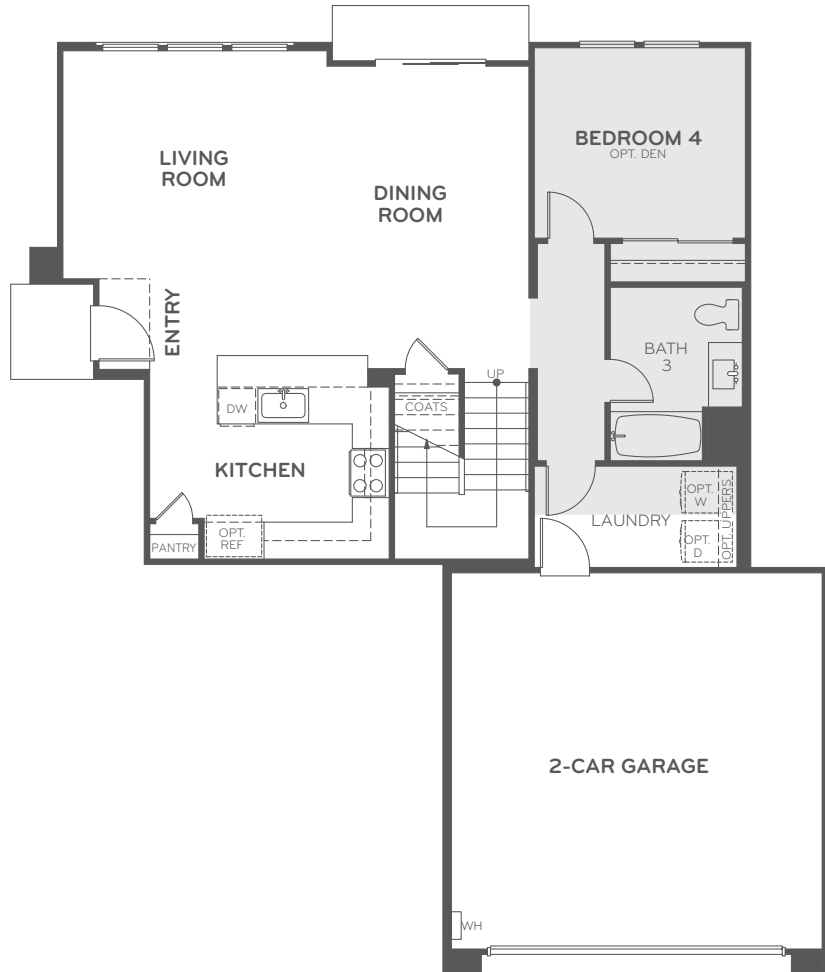
OPT. DEN AT BEDROOM 4



HANDICAP ACCESSIBLE BATHROOM 3



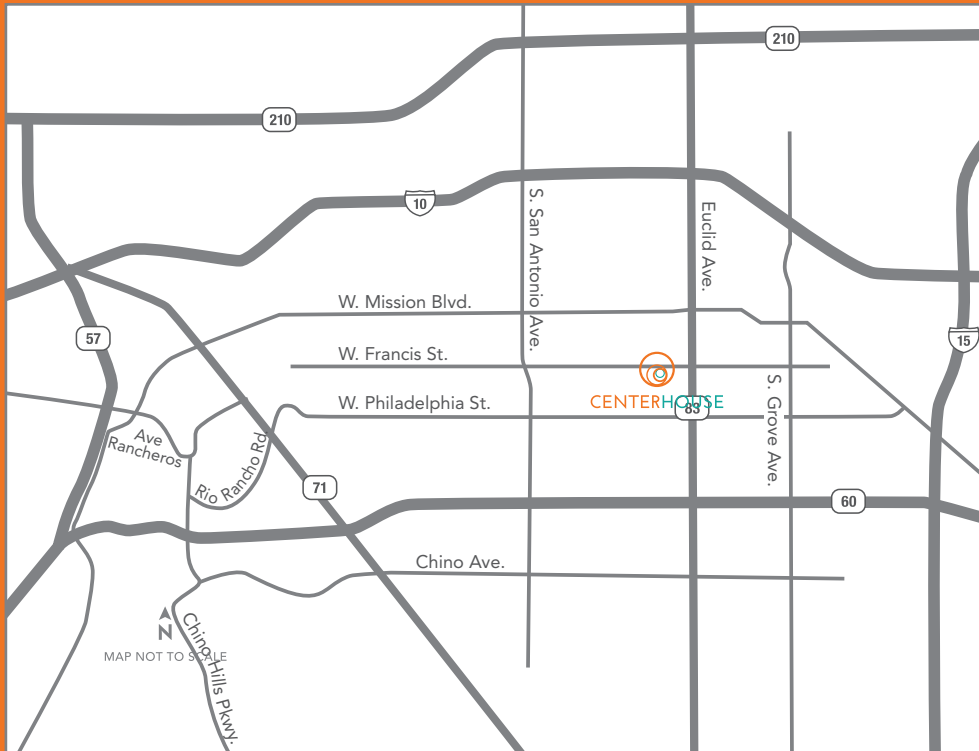
TRUFLEX LOFT AT BEDROOM 3



FIRST FLOOR



SECOND FLOOR



CENTERHOUSEONTARIO.COM

2351 S. FERN AVENUE, ONTARIO, CA 91762

TRUMARK HOMES



All window coverings and flooring displayed in the model homes have been upgraded. Exterior landscaping surrounding models and sales office is highly upgraded and not available for purchase at the design center; side yard configurations in non-model homes will be built per plan specifications. In the interest of continuous improvement, Trumark reserves the right to make modifications to all standard or included features, plans, exterior designs, prices, materials and specifications at any time without notice. Maps, photographs, renderings and landscaping are illustrative and conceptual. Models do not reflect racial preference. Square footages are approximate. Windows and floor plans vary per building, elevation and type. Copyright © 2018 Trumark Construction Services, Inc. All rights reserved. CalBRE broker, license no. 01877720. 🏠