

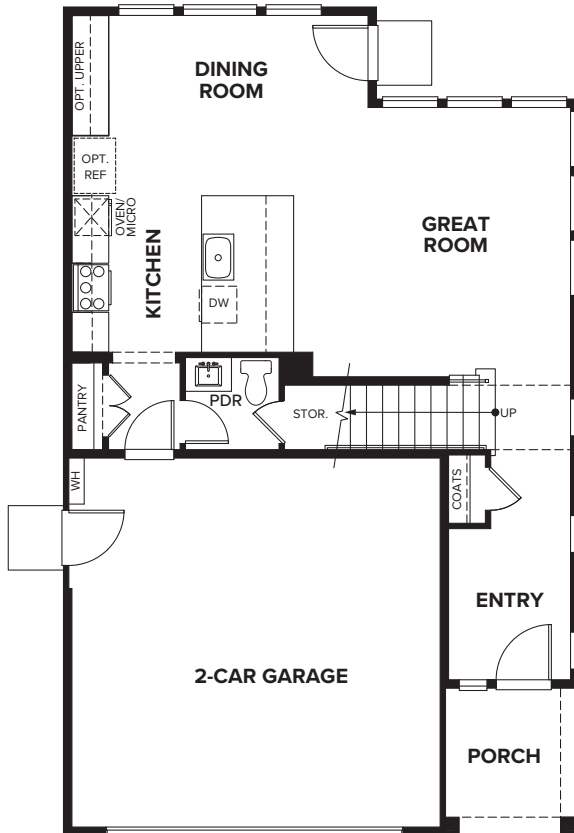
saltcreek

RESIDENCE 1

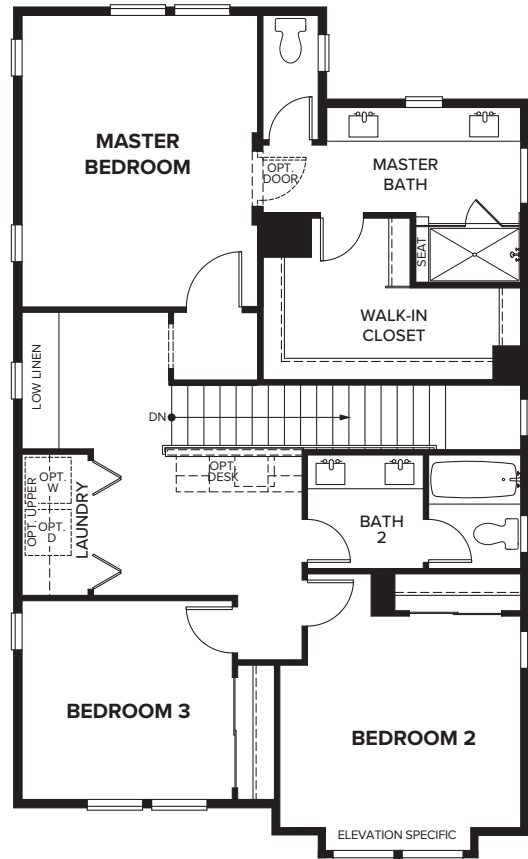
Two-Story Detached Homes | Approximately 1,829 Sq. Ft.

3 Bedrooms | 2.5 Baths

FIRST FLOOR



SECOND FLOOR



GLASS BAY
CFV22 BAY

GLASSBAY.COM

TRUMARK HOMES

All information is for reference only. Prices, taxes and specifications subject to change and should be verified by all potential homebuyers. This is not an offer to sell but is intended for information only. The developer reserves the right to make modifications in materials, specifications, plans, pricing, various fees, designs, scheduling and delivery of homes without prior notice. All dimensions and square footages are approximate. Plan and dimensions may contain minor variations from floor to floor. CalBRE license no. 01877720. 🏠