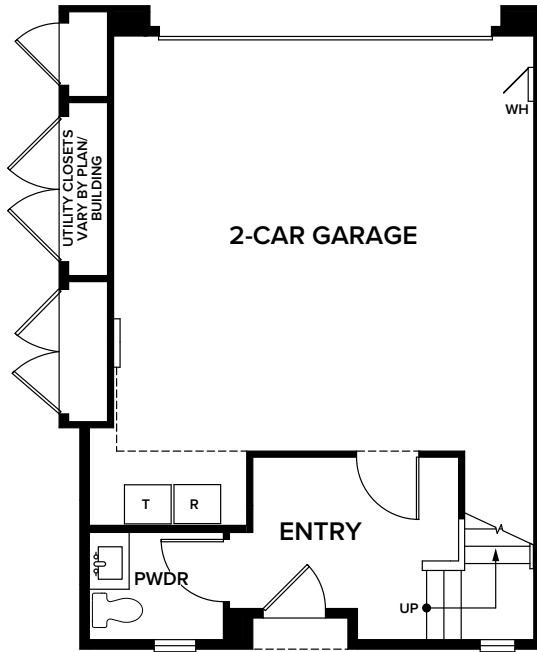
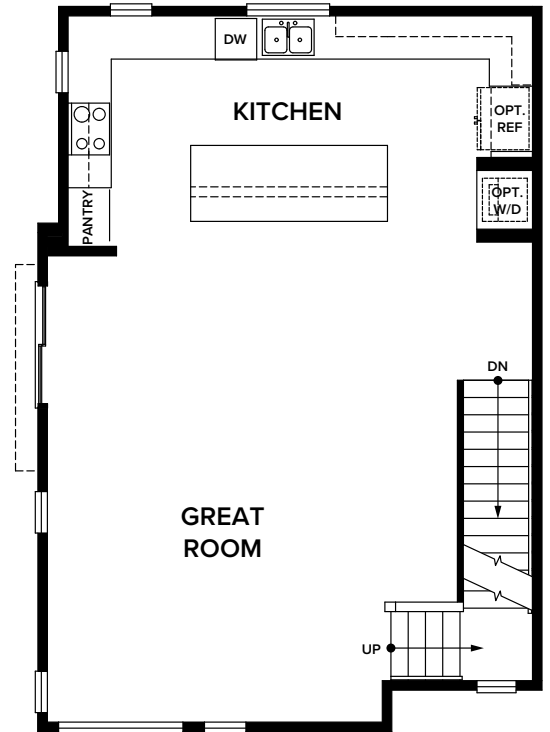


# RESIDENCE 3

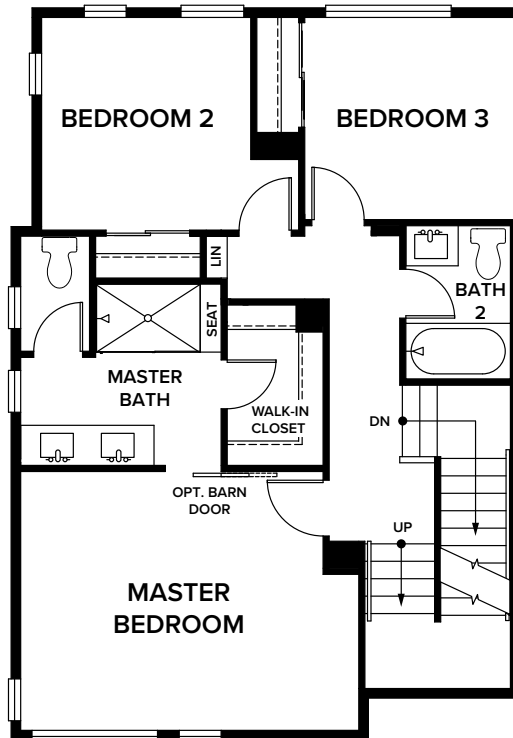


**FIRST FLOOR**

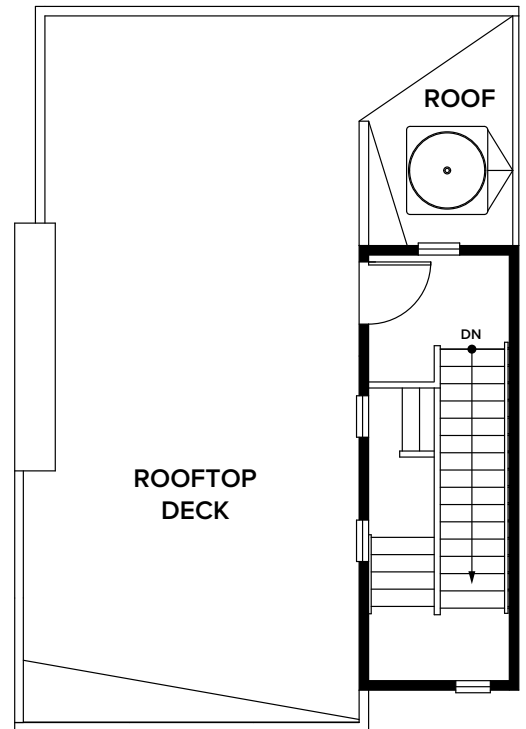


**SECOND FLOOR**

3 BEDROOMS  
 2.5 BATHS  
 APPROX. 1,758 SQ. FT.  
 INDOOR + OUTDOOR LIVING 2,141 SQ. FT.  
 ROOFTOP DECK\*  
 DIRECT-ACCESS 2-CAR GARAGE  
 REVERSED FLOOR PLAN MODELED



**THIRD FLOOR**



**ROOFTOP DECK**

Katerina Shikoff, Sales Manager • CalBRE License #01226540  
 Katerina@Trumarkhomes.com • 925.852.1255  
 Justin Epstein, Sales Associate • CalBRE License #01885999  
 Justin@Trumarkhomes.com • 925.785.2397

**PerchDowntown.com**  
 7176 Regional St., Dublin, CA 94568



\*Rooftop decks vary by lot and floor plan configuration. There is no guarantee of a view from the property. All information is for reference only. Prices, taxes and specifications subject to change and should be verified by all potential home buyers. This is not an offer to sell, but is intended for information only. The developer reserves the right to make modifications in materials, specifications, plans, pricing, various fees, designs, scheduling and delivery of homes without prior notice. All dimensions and square footages are approximate. Plan and dimensions may contain minor variations from floor to floor. CalBRE license no. 01877720. 🏠