

# 1432 143rd St Ct E

TACOMA, WA 98445



## PRICE

**\$889,950**

## PLAN

Plan 3340

## LOCATION

Trails End at Brookdale

## FEATURES

 4 Bedrooms

 3 Ba, 1 Half Ba

 3,340 Sq. Ft.

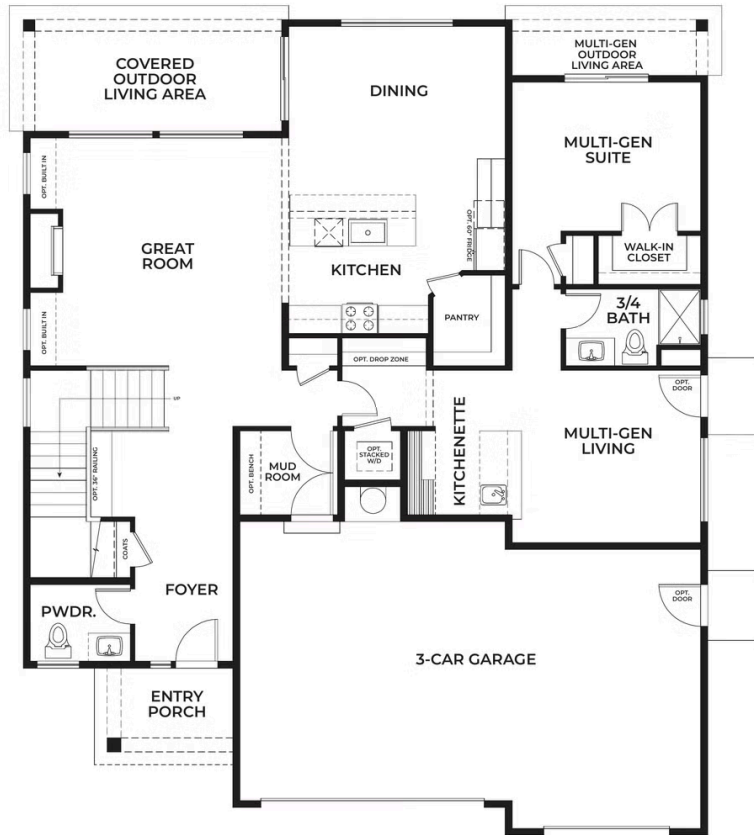
 3 Car Garage

Multi-Gen Living in New home w/modern features. Opportunity to select your finishes for this new plan offering main level flex with 3/4 bath, living room w/small kitchenette, W/D hook-up, private covered patio and separate entry. Gourmet kitchen boasts quartz countertops, full-height tile backsplash, 36" soft-close shaker cabinets, premium Whirlpool appliances including 30" gas range & SS canopy hood. Primary suite offers oversized bedroom, 2 walk-in closets plus an ensuite w/slide-in tub, tiled shower & quartz counters. Leisure Loft, 2 bedrooms, full bath & laundry room finish out the upstairs. Energy-efficient features include W/D, heatpump (A/C), hybrid wtr heater & EV charger pre-wire. Open-concept layout, 9' ceilings, wrought iron rails, LVP flooring & modern linear fireplace, designer selected lighting. Enjoy your 3 car garage, professionally landscaped front yard & spacious covered outdoor living. Close to JBLM & Canyon Rd for commuting. Community will have a future clubhouse. Interior pics are not of actual home/floorplan and may contain upgrades. Colors and specs may vary.



# 1432 143rd St Ct E

TACOMA, WA 98445



# 1432 143rd St Ct E

TACOMA, WA 98445

