

14312 14th Ave Ct E

TACOMA, WA 98445



PRICE
\$799,950

PLAN
Plan 3245

LOCATION
Trails End at Brookdale

FEATURES

-  3 Bedrooms
-  2 Ba, 1 Half Ba
-  3,245 Sq. Ft.
-  3 Car Garage

Move-in Ready plus a \$25K incentive! Close to JBLM and commuter routes, this home blends upscale features with comfort and practicality. Designer selected finishes and lighting throughout this popular floorplan include an 8' front door, wrought-iron rails, white painted millwork, and heat pump (A/C). The great room features a linear electric fireplace and opens to a covered outdoor living area with a private backyard.

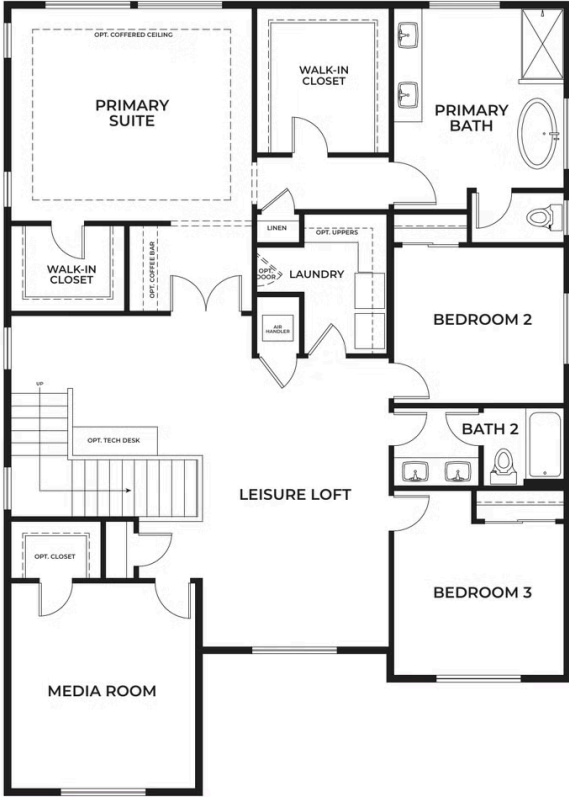
The kitchen boasts quartz countertops, a stainless steel single basin undermount sink, full-height tile backsplash, soft-close cabinetry, and a walk-in pantry. Whirlpool stainless steel appliances including washer and dryer are included. A main-level flex room with an adjacent 3/4 bath provides space for a home office, guest room, or whatever you need. Upstairs, a double door entry leads into the primary suite with a large walk-in closet and ensuite featuring dual sinks, a soaking tub, and a tile/glass walk-in shower. Two additional bedrooms, a bonus loft, and a media room complete the upper level. EV prewire and garage door opener with keyless entry pad included.

Upgrades included at no additional cost: 8' doors on the main, coffered ceiling in primary bedroom, mudroom bench/coat hooks, freestanding tub and tile floors in primary bathroom, and exterior stone accents.

Representative photos and floorplans are for illustrative purposes only. Features, finishes, and layouts may vary.

14312 14th Ave Ct E

TACOMA, WA 98445



14312 14th Ave Ct E

TACOMA, WA 98445



TRUMARKHOMES

14312 14th Ave Ct E

TACOMA, WA 98445

