

14320 14th Ave Ct E

TACOMA, WA 98445



PRICE

\$774,950

PLAN

Plan 3032

LOCATION

Trails End at Brookdale

FEATURES

-  4 Bedrooms
-  2 Ba, 1 Half Ba
-  3,032 Sq. Ft.
-  2 Car Garage

Homesite 200 at Trails End offers spacious, thoughtfully designed living with 4 bedrooms, a guest room or den, a leisure loft, 2.75 baths, covered outdoor living, and a 2-car garage. Designed for both comfort and flexibility, this home blends open-concept gathering spaces with private retreats ideal for modern living and entertaining.

A welcoming entry opens into the grand foyer, where a private guest room or den and nearby 3/4 bath provide the ideal setup for visitors, multigenerational living, or a dedicated home office. Further into the home, the open-concept layout seamlessly connects the great room, dining area, and chef-inspired kitchen, creating an inviting setting for entertaining and everyday living. The kitchen features a large center island, walk-in pantry, abundant cabinetry, and generous prep space, while the covered outdoor living area extends the home's entertaining possibilities year-round.

Upstairs, the expansive primary suite offers a relaxing retreat complete with a spa-inspired bath featuring a freestanding soaking tub, walk-in shower, dual vanities, tile flooring, and an oversized walk-in closet. Three additional bedrooms and a spacious leisure loft provide versatile spaces for relaxing, working, or gathering. A centrally located utility room adds everyday convenience to the thoughtfully designed second-floor layout.

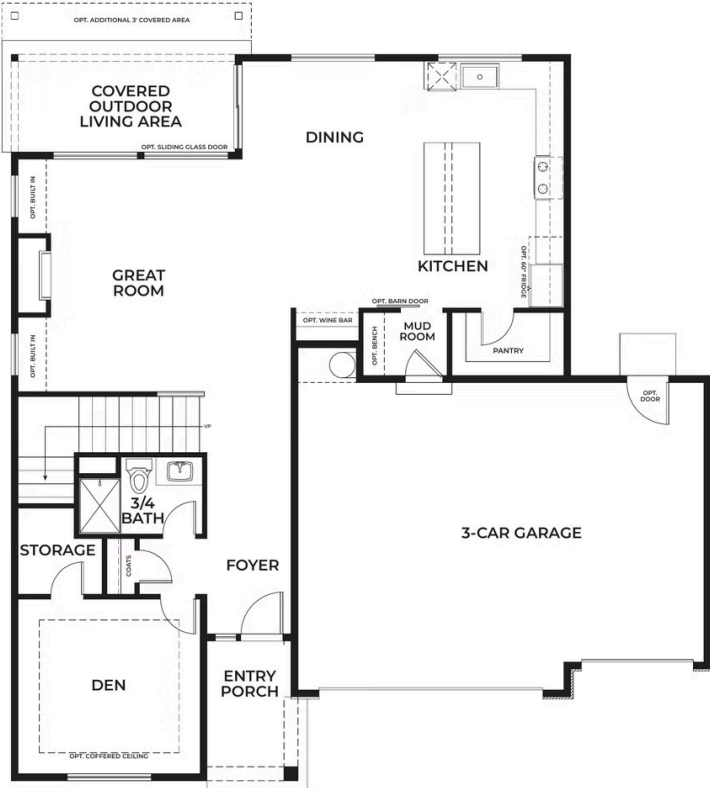
Designer upgrades are included throughout the home, enhancing both style and functionality. Additional highlights include 8-foot main-floor doors, custom drywall coffer detailing in the primary bedroom, a spacious kitchen with a large center island and walk-in pantry, a private main-level guest room or home office with a nearby 3/4 bath, and a flexible four-bedroom layout with an upstairs leisure loft. Exterior stone accents add curb appeal, while rear yard fencing with a gate and front yard irrigation are included for added convenience. Thoughtfully designed storage spaces, including a mud bench, help keep daily life organized, and the 2-car garage offers additional storage space.

Located in the peaceful Trails End neighborhood, residents enjoy convenient access to JBLM, Pacific Lutheran University, shopping, dining, parks, trails, and major commuter routes throughout Tacoma and the South Puget Sound region.



14320 14th Ave Ct E

TACOMA, WA 98445



TRUMARKHOMES

14320 14th Ave Ct E

TACOMA, WA 98445

