

14206 14th Ave Ct E

TACOMA, WA 98445



PRICE

\$799,950

PLAN

Plan 3032

LOCATION

Trails End at Brookdale

FEATURES

-  4 Bedrooms
-  2 Ba, 1 Half Ba
-  3,032 Sq. Ft.
-  3 Car Garage

Homesite 195 at Trails End offers flexible, spacious living with 3 bedrooms, a guest room or den, leisure loft, media room, 2.75 baths, covered outdoor living, and a 3-car tandem garage.

A welcoming foyer leads to a private guest room or home office with an adjacent 3/4 bath. The open-concept main living area connects the great room, dining area, and chef-inspired kitchen, featuring a large center island, walk-in pantry, and direct access to the covered outdoor living space.

Upstairs, the expansive primary suite includes a spa-inspired bath with a soaking tub, walk-in shower, dual vanities, and oversized walk-in closet. Two additional bedrooms, a versatile loft, media room, and centrally located laundry room complete the second floor.

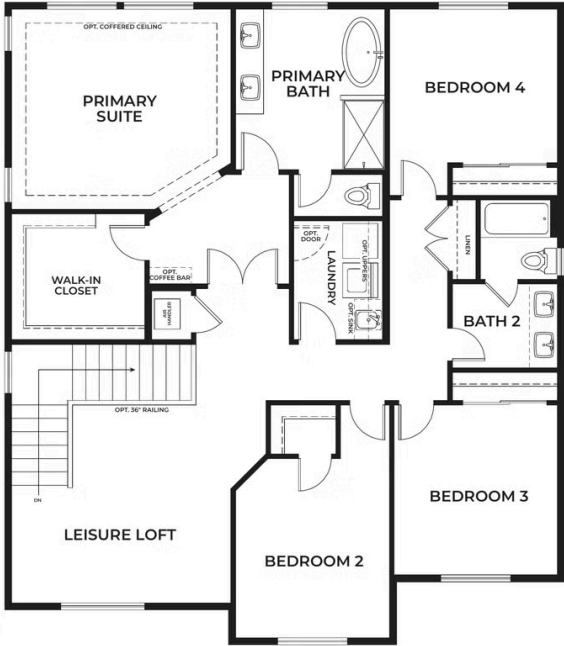
Designer upgrades are included throughout, along with 8-foot main-floor doors, custom coffer detailing in the primary bedroom, upper laundry cabinetry, a mud bench, rear yard fencing, front yard irrigation, and an optional direct-access door between the primary suite and laundry room.

Located in the peaceful Trails End neighborhood, residents enjoy convenient access to JBLM, Pacific Lutheran University, shopping, dining, parks, trails, and major commuter routes throughout Tacoma and the South Puget Sound region.

Representative photos and floorplans are for illustrative purposes only.

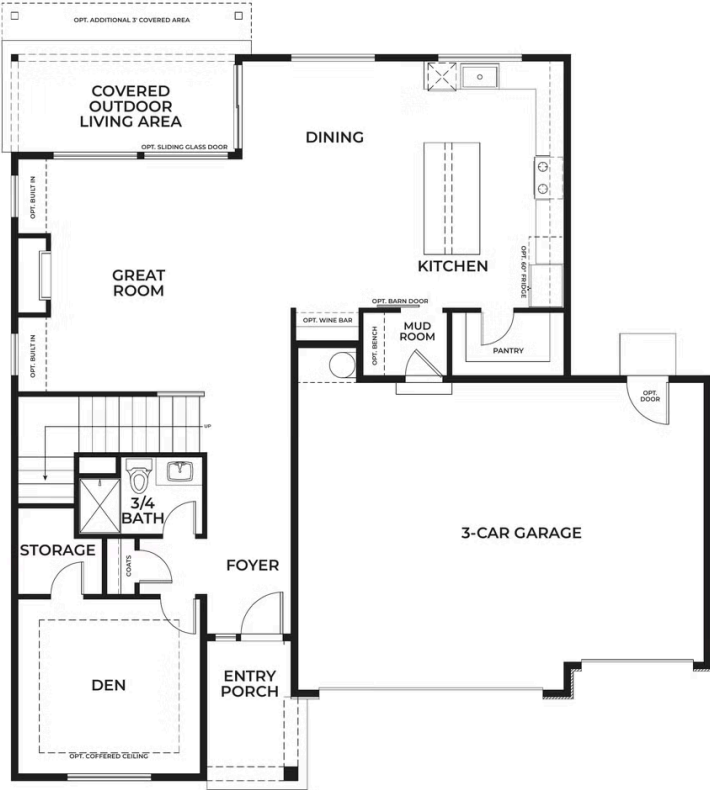
14206 14th Ave Ct E

TACOMA, WA 98445



14206 14th Ave Ct E

TACOMA, WA 98445



TRUMARKHOMES

14206 14th Ave Ct E

TACOMA, WA 98445

