

# 14216 14th Ave Ct E

TACOMA, WA 98445



## PRICE

**\$774,950**

## PLAN

Plan 2975

## LOCATION

Trails End at Brookdale

## FEATURES

-  4 Bedrooms
-  2 Ba, 1 Half Ba
-  2,975 Sq. Ft.
-  3 Car Garage

Certainly. Here's a more concise version that still highlights the home's key features and flow:

Homesite 196 at Trails End offers thoughtfully designed living with 3 bedrooms, a guest room or den, a leisure loft, media room, 2.75 baths, covered outdoor living, and a 3-car tandem garage.

A welcoming foyer leads to a private guest room or home office and nearby 3/4 bath, providing flexibility for guests, multigenerational living, or remote work. The open-concept main floor seamlessly connects the great room, dining area, and chef-inspired kitchen, featuring a large center island, walk-in pantry, abundant cabinetry, and easy access to the covered outdoor living area for year-round enjoyment.

Upstairs, the spacious primary suite offers a spa-inspired bath with a freestanding soaking tub, walk-in shower, dual vanities, tile flooring, and an oversized walk-in closet. Two additional bedrooms, a versatile leisure loft, dedicated media room, and centrally located utility room complete the second floor. An optional direct-access connection between the primary suite and laundry room adds extra convenience.

Designer upgrades are included throughout, along with 8-foot main-floor doors, custom drywall coffer detailing in the primary bedroom, exterior stone accents, rear yard fencing with gate, front yard irrigation, and thoughtfully designed





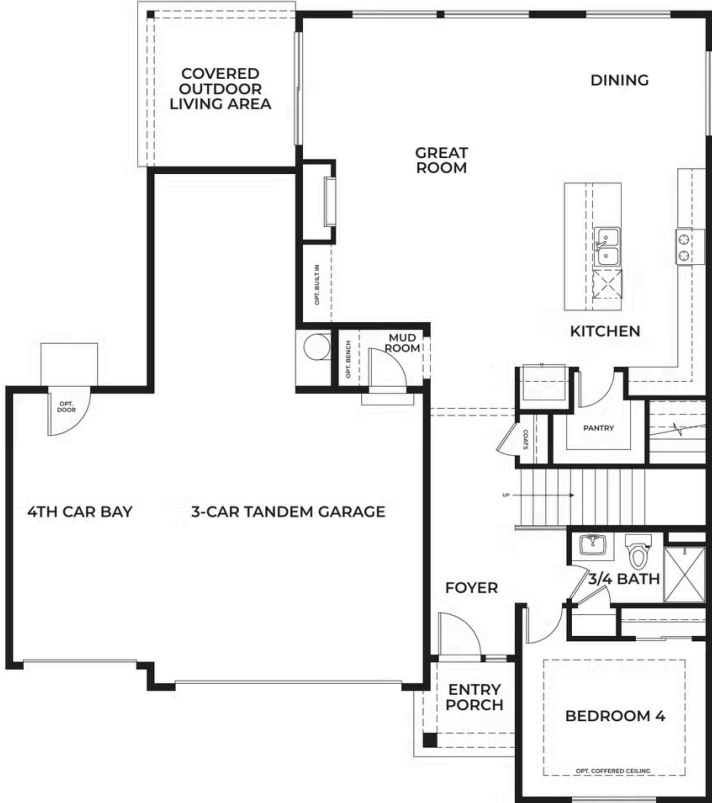
# 14216 14th Ave Ct E

TACOMA, WA 98445



# 14216 14th Ave Ct E

TACOMA, WA 98445



TRUMARK HOMES

# 14216 14th Ave Ct E

TACOMA, WA 98445

