

14306 14th Ave Ct E

TACOMA, WA 98445



PRICE
\$774,950

PLAN
Plan 2872

LOCATION
Trails End at Brookdale

FEATURES

-  3 Bedrooms
-  2 Ba, 1 Half Ba
-  2,872 Sq. Ft.
-  3 Car Garage

Homesite 197 at Trails End offers flexible, thoughtfully designed living with 3 bedrooms, a guest room or den, leisure loft, 2.75 baths, covered outdoor living, and a 3-car garage.

A welcoming foyer leads to a private guest room or home office with an adjacent 3/4 bath. The open-concept main living area connects the great room, dining area, and chef-inspired kitchen, featuring a large center island, walk-in pantry, and direct access to the covered outdoor living space.

Upstairs, the spacious primary suite provides a relaxing retreat with a spa-inspired bath, soaking tub, walk-in shower, dual vanities, and oversized walk-in closet. Two additional bedrooms, a versatile leisure loft, and a centrally located laundry room complete the second floor.

Designer upgrades are included throughout, along with 8-foot main-floor doors, custom coffer detailing in the primary bedroom, exterior stone accents, rear yard fencing with gate, front yard irrigation, and a spacious 3-car garage.

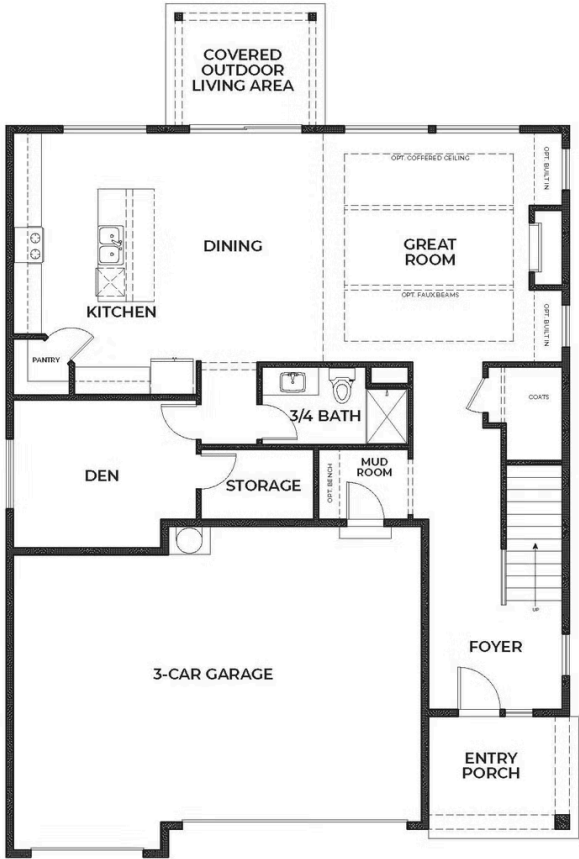
Located in the peaceful Trails End neighborhood, residents enjoy convenient access to JBLM, Pacific Lutheran University, shopping, dining, parks, trails, and major commuter routes throughout Tacoma and the South Puget Sound region.

Representative photos and floorplans are for illustrative purposes only.

14306 14th Ave Ct E

TACOMA, WA 98445

TRAILS END AT BROOKDALE | PLAN 2872 | FIRST FLOOR



14306 14th Ave Ct E

TACOMA, WA 98445

TRAILS END AT BROOKDALE | PLAN 2872 | SECOND FLOOR



14306 14th Ave Ct E

TACOMA, WA 98445

TRAILS END AT BROOKDALE | PLAN 2872 | OPTIONAL BED 4

