

1653 Flourish Drive

WINDSOR, CO 80550



PRICE

\$1,499,900

PLAN

The Isleworth

LOCATION

The Fairways at RainDance

FEATURES

-  4 Bedrooms
-  4 Ba, 1 Half Ba
-  3,110 Sq. Ft.
-  3 Car Garage

This Isleworth Plan at The Fairways at RainDance is a stunning single-story home offering up to 4,869 sq. ft. of living space and is Move-in ready!

Backing to RainDance National golf course, this home has everything you could imagine with 4 bedrooms, 4.5 baths and a finished walk out basement with wet bar! Adjacent to the formal entry is the office with a glass wall and door. Head past the entry to find the spacious dining area with stained ceiling beams and a chef's dream kitchen, featuring a walk-in pantry, bench and cubbies and an oversized island. The beautiful kitchen features deluxe white and sage shaker style stacked cabinetry, Calcutta Classique quartz countertops with tile backsplash, Pro Thermador stainless steel appliances including 48" gas range with hood and 30" fridge and freezer. The great room, complete with a modern linear gas fireplace to keep you cozy in the winter, is filled with natural light and overlooks the covered outdoor deck, allowing you to take in the stunning views of the high-plains links-style golf course at RainDance National.

At the end of a long day, retreat to the grand suite, featuring ample windows, a luxurious spa like bathroom, walk-in shower, and an elegant freestanding tub. An expansive walk-in closet and generous fitness room with a closet complete the primary suite. On the other side of the home you'll find the spacious laundry room with sink and expansive cabinetry, a secondary sitting room and two bedrooms both with private ensuite baths and walk-in closets. The finished basement with 10-foot ceilings and 8-foot doors includes a rec room and wet bar, a large patio with center meet sliding glass door, and an additional bedroom and bath. The home also includes insulated steel garage doors, tankless water heater, AC, front and rear yard landscape, golf cart garage, and much more.

THE ISLEWORTH FLOOR PLAN

THE FAIRWAYS • 70' LOTS
4,680 – 4,756 Sq. Ft. • 4 – 5 Bedrooms • 4.5 Baths

THE ISLEWORTH



ELEVATION A – MODERN FARMHOUSE



ELEVATION C – MODERN MOUNTAIN



ELEVATION C
FIRST FLOOR
Approx. 3,125 Sq. Ft.

THE ISLEWORTH FLOOR PLAN

THE FAIRWAYS • 70' LOTS
4,680 - 4,756 Sq. Ft. • 4 - 5 Bedrooms • 4.5 Baths

THE ISLEWORTH

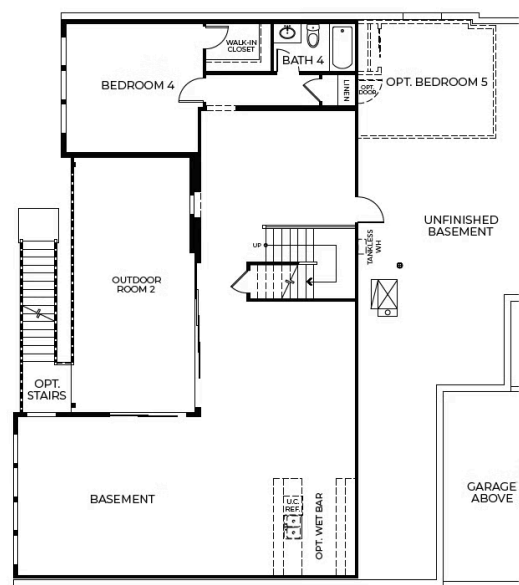


FIRST FLOOR
Approx. 3,125 Sq. Ft.

THE ISLEWORTH FLOOR PLAN

THE FAIRWAYS • 70' LOTS
4,680 - 4,756 Sq. Ft. • 4 - 5 Bedrooms • 4.5 Baths

THE ISLEWORTH



OPTIONAL
PARTIAL WALK-OUT
Approx. 1,555 - 1,741 Sq. Ft.