

# 1641 Flourish Court

WINDSOR, CO 80550



PRICE  
**\$1,499,900**

PLAN  
The Isleworth

LOCATION  
The Fairways at RainDance

## FEATURES

-  4 Bedrooms
-  4 Ba, 1 Half Ba
-  4,869 Sq. Ft.
-  3 Car Garage

Homesite 0507 at the Fairways at RainDance by Trumark Homes is a ranch floor plan backing to a National Golf Course, featuring dusk-stained shaker cabinetry, Citrine Quartz countertops, stainless steel appliances including a 48" dual-fuel Monogram range and built-in refrigerator, a fireplace, and a center-meet slider opening to an oversized covered deck with stairs to the backyard. It includes a finished walkout basement with a wet bar, bedroom, and bath, plus a 3-car garage with golf cart storage.

The primary suite offers a freestanding tub, walk-in shower, and large walk-in closet. The home provides engineered hardwood flooring, carpeted bedrooms, tankless water heater, AC, and landscaping. Totaling 4,869 finished sq. ft., it includes 4 bedrooms, 4.5 baths, a glass-walled office, fitness space off the primary bedroom, and golf course views.



# 1641 Flourish Court

WINDSOR, CO 80550

GET IN TOUCH  
(970) 499-8222

## THE ISLEWORTH FLOOR PLAN

THE FAIRWAYS • 70' LOTS  
4,680 - 4,756 Sq. Ft. • 4 - 5 Bedrooms • 4.5 Baths

THE ISLEWORTH



ELEVATION A - MODERN FARMHOUSE



ELEVATION C - MODERN MOUNTAIN



ELEVATION C  
FIRST FLOOR  
Approx. 3,125 Sq. Ft.

# 1641 Flourish Court

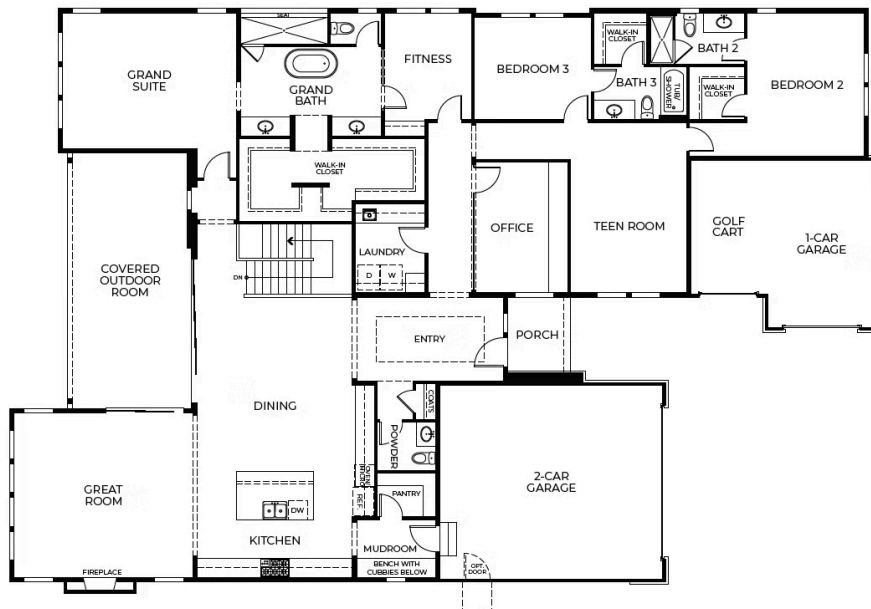
WINDSOR, CO 80550

GET IN TOUCH  
(970) 499-8222

## THE ISLEWORTH FLOOR PLAN

THE FAIRWAYS • 70' LOTS  
4,680 - 4,756 Sq. Ft. • 4 - 5 Bedrooms • 4.5 Baths

THE ISLEWORTH



FIRST FLOOR  
Approx. 3,125 Sq. Ft.

# 1641 Flourish Court

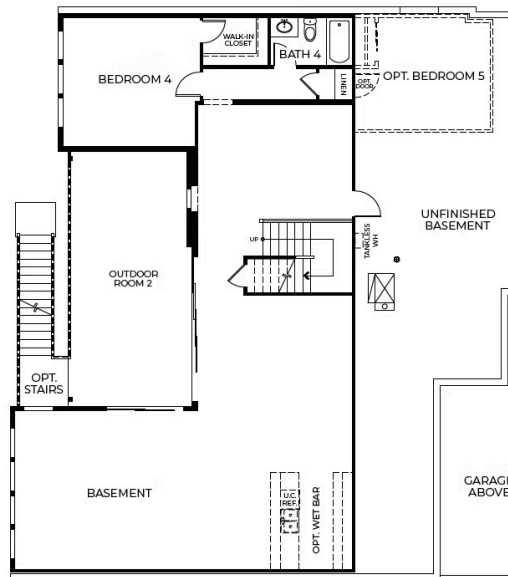
WINDSOR, CO 80550

GET IN TOUCH  
(970) 499-8222

## THE ISLEWORTH FLOOR PLAN

THE FAIRWAYS • 70' LOTS  
4,680 - 4,756 Sq. Ft. • 4 - 5 Bedrooms • 4.5 Baths

THE ISLEWORTH



OPTIONAL  
PARTIAL WALK-OUT  
Approx. 1,555 - 1,741 Sq. Ft.