

1659 Flourish Drive

WINDSOR, CO 80550



PRICE

\$1,807,530

PLAN

The Broadmoor

LOCATION

The Fairways at RainDance

FEATURES

-  3 Bedrooms
-  3.5 Bathrooms
-  3,110 Sq. Ft.
-  3 Car Garage

The Broadmoor Plan at The Fairways at RainDance by Trumark Homes features an inviting porch leading up to the entryway. This stunning single-story home offers 4,871 sq. ft. of finished space with 4 bedrooms and 4.5 baths. Just past the entryway is the large great room and gourmet kitchen, featuring a walk-in pantry and a center preparation island. The kitchen includes deluxe cabinetry in a dusk stain, Quartz countertops with subway tile backsplash, a Thermador Pro Series stainless steel appliance package, and decorative fixtures. The great room filled with natural light from the center meet sliding glass door features a vaulted ceiling with stained beams and a modern linear gas fireplace. Step out onto the covered outdoor deck from the great room or dining room to take in the stunning views of the high-plains links-style golf course at RainDance National.

Off the great room is the flex office and private grand suite, including a luxurious bathroom with two sinks, walk-in shower, an elegant freestanding tub with floor mounted tub filler and an expansive walk-in closet. Off the entry hall you will find a bonus room, laundry with sink and cabinets, and two bedrooms both with ensuite baths.

The finished basement includes an additional bedroom and bath and a spacious rec room complete with a wet bar. The home also comes with beautiful 5' engineered wood flooring in a natural finish throughout the main level with luxurious carpet in the bedrooms and basement. 10-foot ceilings on the main floor and basement with 8-foot doors, insulated steel garage doors, tankless water heater, dual AC, front yard landscaping, a golf cart garage, and much more!

1659 Flourish Drive

WINDSOR, CO 80550

GET IN TOUCH
(970) 499-8222

THE BROADMOOR FLOOR PLAN

THE FAIRWAYS • 70' LOTS
4,718 - 4,871 Sq. Ft. • 4 - 5 Bedrooms • 4.5 Baths

THE BROADMOOR



ELEVATION A - MODERN FARMHOUSE



ELEVATION C - MODERN MOUNTAIN

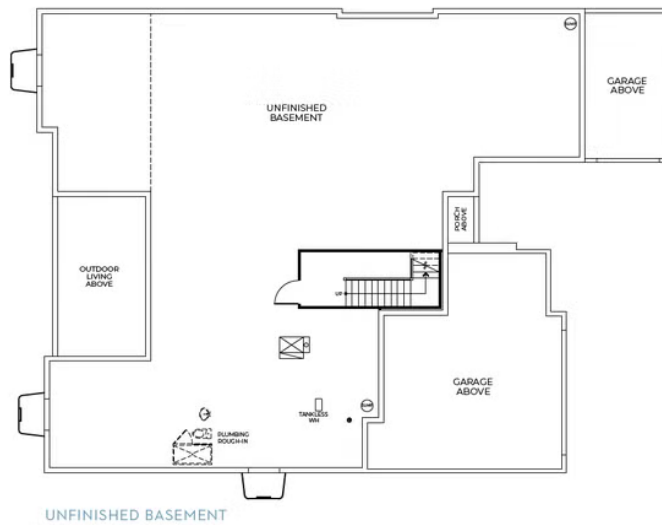


ELEVATION C
FIRST FLOOR

THE BROADMOOR FLOOR PLAN

THE FAIRWAYS • 70' LOTS
4,718 - 4,871 Sq. Ft. • 4 - 5 Bedrooms • 4.5 Baths

THE BROADMOOR



1659 Flourish Drive

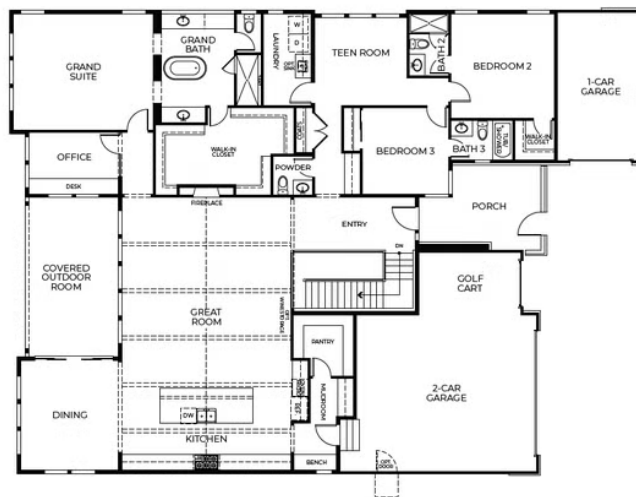
WINDSOR, CO 80550

GET IN TOUCH
(970) 499-8222

THE BROADMOOR FLOOR PLAN

THE FAIRWAYS • 70' LOTS
4,718 - 4,871 Sq. Ft. • 4 - 5 Bedrooms • 4.5 Baths

THE BROADMOOR



FIRST FLOOR
Approx. 3,001 Sq. Ft.

TRUMARK**HOMES**

1659 Flourish Drive

WINDSOR, CO 80550

GET IN TOUCH
(970) 499-8222

THE BROADMOOR FLOOR PLAN

