

Plan 2

SUGAR HILLS AT RAINDANCE



PRICE
\$799,000

FEATURES

-  4 - 5 Bedrooms
-  4 - 5 Bathrooms
-  2,733 Sq. Ft.
-  3 Car Garage

Plan 2 at Sugar Hills at RainDance by Trumark Homes is a single-story home featuring 2,733 Sq. Ft. of living space with four bedrooms and four baths. Just through the entryway is the in-home office and teen room leading to the secondary bedrooms with ensuite bathrooms. Beyond the entry you'll find the great room complete with a modern gas fireplace and a covered outdoor room, which is accessible from both the dining room and the great room. The gourmet kitchen features a spacious walk-in pantry and center preparation island for all your entertaining needs. 42" deluxe cabinetry, granite countertops with tile backsplash, stainless steel appliance package with 5-burner gas cooktop, convection oven, built-in microwave, and dishwasher are included.

The contemporary primary suite features a spa-like bathroom with two sinks, a walk-in shower, and luxurious freestanding tub. This bathroom is complete with two spacious walk-in closets. Downstairs, an optional finished basement includes a bedroom and full bathroom. Add an optional wet bar for easy entertaining. The home also comes with LVP flooring in the entry and kitchen, luxurious carpet in bedrooms, deluxe primary shower tile with mosaic tile shower pan, spacious 10-foot ceilings on the main floor and 9' on the upper floor and basement, tankless water heater and AC, insulated steel garage door, and much more!

Plan 2

SUGAR HILLS AT RAINDANCE

SUGAR HILLS PLAN 2 FLOOR PLAN

SUGAR HILLS • 60' LOTS
2,733 - 4,126 Sq. Ft. • 4 - 5 Bedrooms • 4 - 5 Baths

RESIDENCE 2



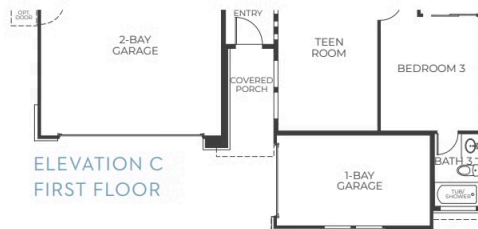
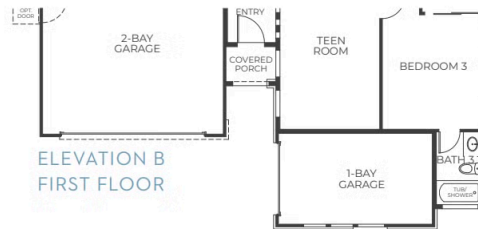
ELEVATION A - MODERN FARMHOUSE



ELEVATION B - MODERN PRAIRIE



ELEVATION C - MODERN MOUNTAIN



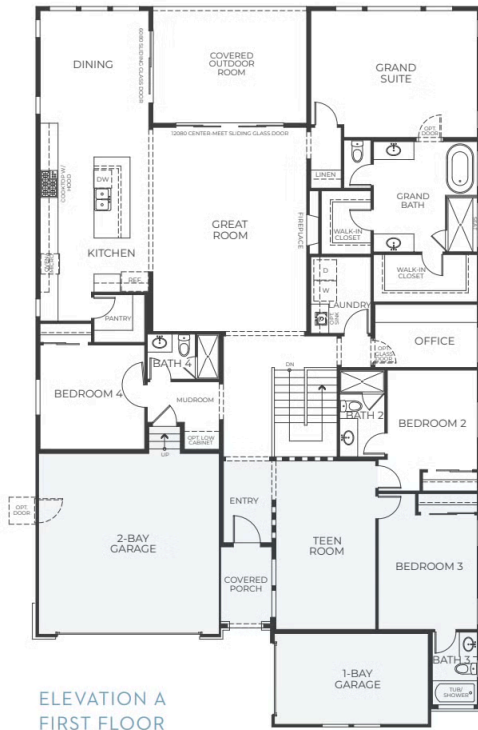
Plan 2

SUGAR HILLS AT RAINDANCE

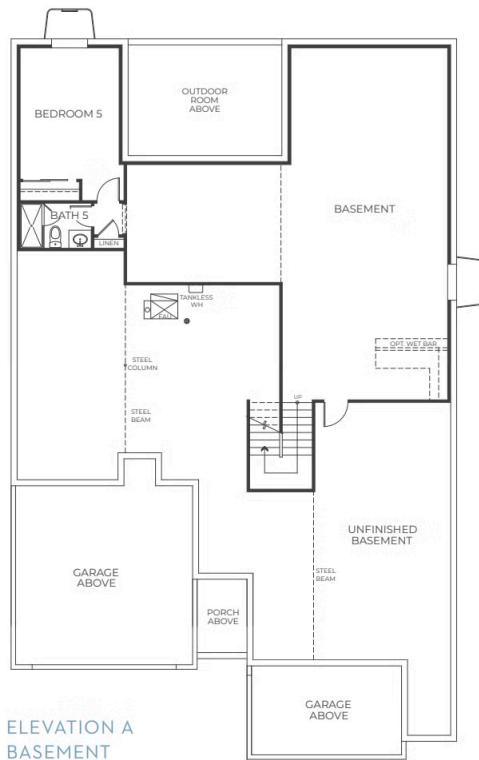
SUGAR HILLS PLAN 2 FLOOR PLAN

SUGAR HILLS • 60' LOTS
2,733 - 4,126 Sq. Ft. • 4 - 5 Bedrooms • 4 - 5 Baths

RESIDENCE 2



ELEVATION A
FIRST FLOOR



ELEVATION A
BASEMENT