

# 1591 Winter Glow Drive

WINDSOR, CO 80550



PRICE  
**\$749,900**

PLAN  
Plan 6

LOCATION  
Festival at RainDance

## FEATURES

-  4 Bedrooms
-  3.5 Bathrooms
-  2,491 Sq. Ft.
-  2 Car Garage

Homesite 2, a garden level plan 6 at Festival at RainDance by Trumark Homes, is a contemporary two-story home offering 2,491 Sq. Ft. of living space with 4 bedrooms and 3.5 baths backing to a green belt and community trail. Off the entrance hall and foyer is a charming open concept office. Just beyond is the gourmet kitchen featuring a spacious walk-in pantry, ample storage, and a center preparation island that overlooks the dining and great rooms. The kitchen includes 42" deluxe Moonlight Shaker cabinetry, quartz countertops with tile backsplash, Beko stainless steel appliance package with 5-burner gas cooktop, convection oven, built-in microwave, and a dishwasher. This room connects to the large, covered outdoor deck with stairs to the backyard, making entertaining a breeze.

Upstairs you'll find a multi-functional loft, three secondary bedrooms, and a laundry room with sink. The grand suite offers a luxurious, spa-like bathroom with dual sinks, walk-in shower, and an expansive walk-in closet. Take advantage of the oversized 2-car garage. The home comes with extensive 5" engineered wood flooring entry and kitchen, luxurious carpet in bedrooms, spacious 10-foot ceilings on the main floor and 9' on the upper floor and basement, tankless water heater, insulated garage door, AC, and a fully fenced and landscaped yard!



# 1591 Winter Glow Drive

WINDSOR, CO 80550

GET IN TOUCH  
(970) 499-8222

## FESTIVAL PLAN 6 FLOOR PLAN

FESTIVAL • 50' LOTS  
2,491 Sq. Ft. • 4 Bedrooms • 3.5 Baths

RESIDENCE 6



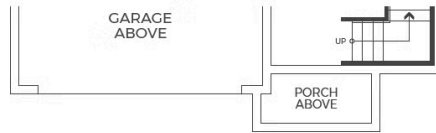
ELEVATION A - MODERN FARMHOUSE



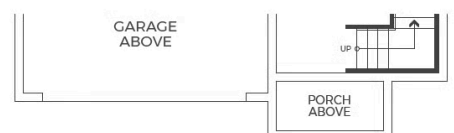
ELEVATION B - MODERN PRAIRIE



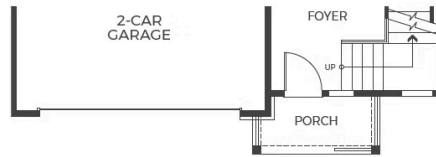
ELEVATION C - MODERN MOUNTAIN



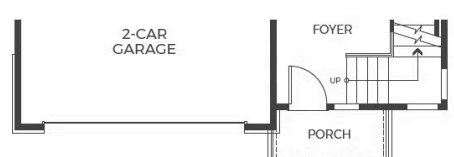
ELEVATION B  
BASEMENT



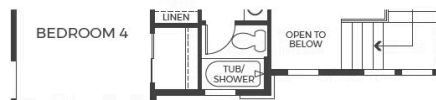
ELEVATION C  
BASEMENT



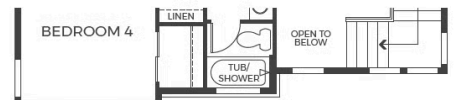
ELEVATION B  
FIRST FLOOR



ELEVATION C  
FIRST FLOOR



ELEVATION B  
SECOND FLOOR



ELEVATION C  
SECOND FLOOR

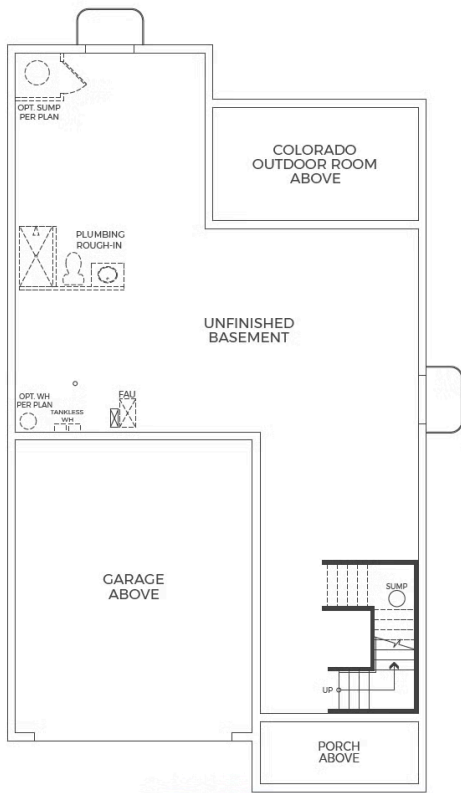
# 1591 Winter Glow Drive

WINDSOR, CO 80550

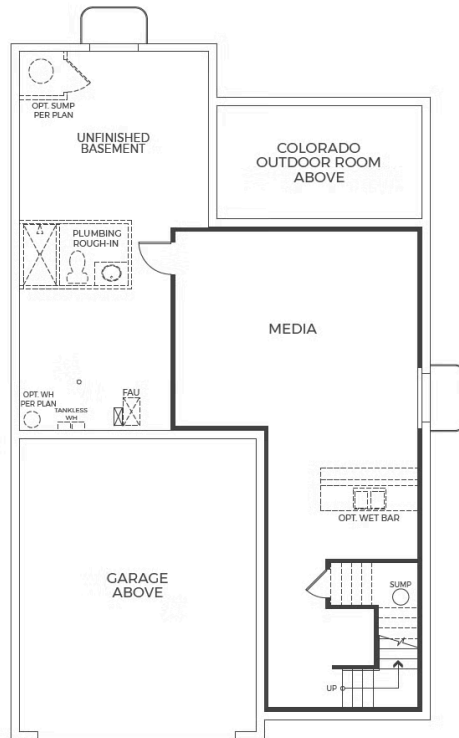
## FESTIVAL PLAN 6 FLOOR PLAN

FESTIVAL • 50' LOTS  
2,491 Sq. Ft. • 4 Bedrooms • 3.5 Baths

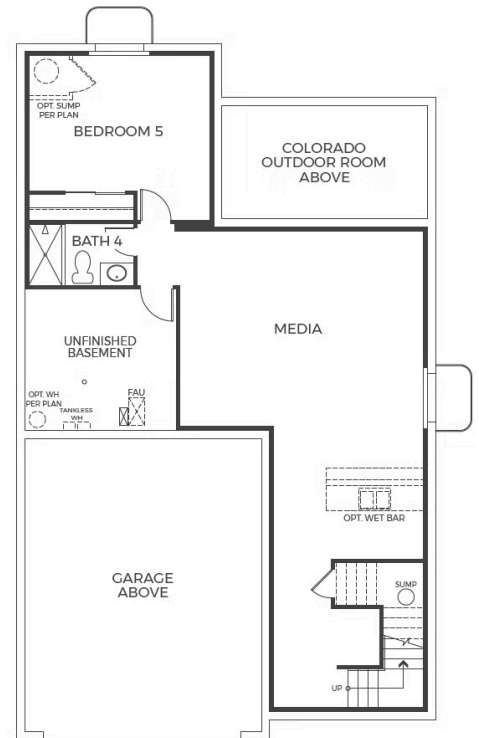
RESIDENCE 6



BASEMENT



OPTIONAL FINISHED  
BASEMENT 1



OPTIONAL FINISHED  
BASEMENT 2

# 1591 Winter Glow Drive

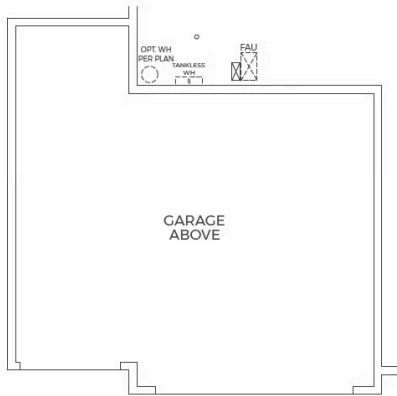
WINDSOR, CO 80550

GET IN TOUCH  
(970) 499-8222

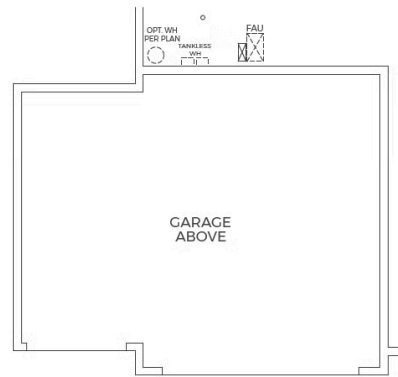
## FESTIVAL PLAN 6 FLOOR PLAN

FESTIVAL • 50' LOTS  
2,491 Sq. Ft. • 4 Bedrooms • 3.5 Baths

RESIDENCE 6



OPTIONAL OVERSIZED 3-CAR  
GARAGE AT BASEMENT



OPTIONAL 3-CAR  
GARAGE AT BASEMENT

TRUMARKHOMES

# 1591 Winter Glow Drive

WINDSOR, CO 80550

GET IN TOUCH  
(970) 499-8222

## FESTIVAL PLAN 6 FLOOR PLAN



TRUMARKHOMES

# 1591 Winter Glow Drive

WINDSOR, CO 80550

GET IN TOUCH  
(970) 499-8222

## FESTIVAL PLAN 6 FLOOR PLAN



TRUMARKHOMES

# 1591 Winter Glow Drive

WINDSOR, CO 80550

GET IN TOUCH  
(970) 499-8222

## FESTIVAL PLAN 6 FLOOR PLAN

