

1581 Winter Glow Drive

WINDSOR, CO 80550



PRICE

\$799,900

PLAN

Plan 6

LOCATION

Festival at RainDance

FEATURES

-  4 Bedrooms
-  3.5 Bathrooms
-  2,491 Sq. Ft.
-  2 Car Garage

Our Plan 6 with the Modern Mountain elevation and rare walkout basement in Festival at RainDance by Trumark Homes is a contemporary two-story home offering 2,491 Sq. Ft. of living space with 4 bedrooms and 3.5 baths. Off the entrance hall and foyer is a charming open concept office. Just beyond is the gourmet kitchen featuring a spacious walk-in pantry, ample storage, and a center preparation island which overlooks the dining and great rooms. The kitchen includes 42" deluxe sage cabinetry, quartz countertops with tile backsplash, stainless steel appliance package with 5-burner gas cooktop, convection oven, built-in microwave, and dishwasher. This room connects to the large Colorado outdoor room which includes a deck and stairs to the beautifully landscaped backyard. Upstairs you'll find a multi-functional teen room, three secondary bedrooms, and laundry room with sink. The grand suite offers a luxurious, spa-like bathroom with dual sinks, oversized walk-in shower, and an expansive walk-in closet. An oversized 2-car is great for extra storage or even a golf cart! This home also features upgraded engineered hardwood flooring on the main level, luxurious carpet in bedrooms, spacious 10-foot ceilings on the main floor and 9' on the upper floor and basement, tankless water heater and AC, insulated steel garage door, and much more!

1581 Winter Glow Drive

WINDSOR, CO 80550

GET IN TOUCH
(970) 499-8222

FESTIVAL PLAN 6 FLOOR PLAN

FESTIVAL • 50' LOTS
2,491 Sq. Ft. • 4 Bedrooms • 3.5 Baths

RESIDENCE 6



ELEVATION A - MODERN FARMHOUSE



ELEVATION B - MODERN PRAIRIE



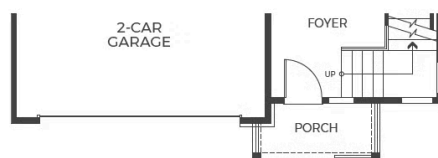
ELEVATION C - MODERN MOUNTAIN



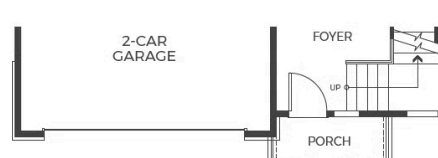
ELEVATION B
BASEMENT



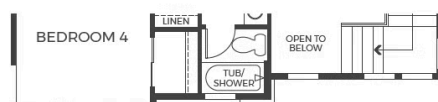
ELEVATION C
BASEMENT



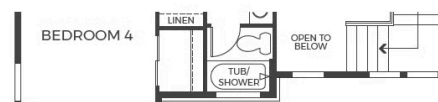
ELEVATION B
FIRST FLOOR



ELEVATION C
FIRST FLOOR



ELEVATION B
SECOND FLOOR



ELEVATION C
SECOND FLOOR

1581 Winter Glow Drive

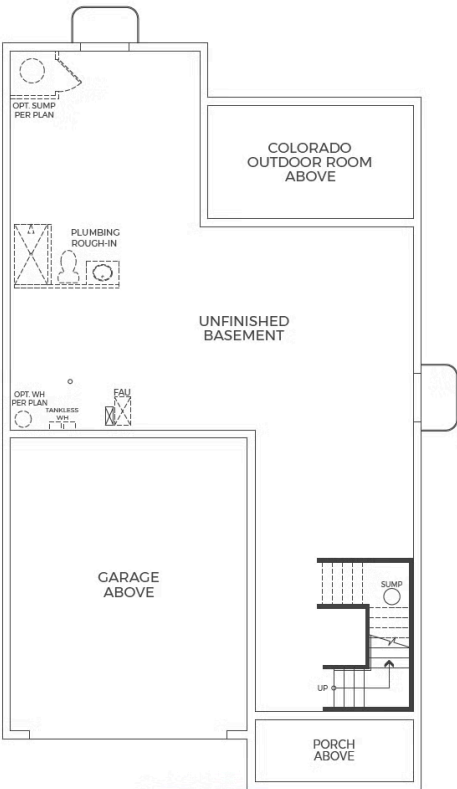
WINDSOR, CO 80550

GET IN TOUCH
(970) 499-8222

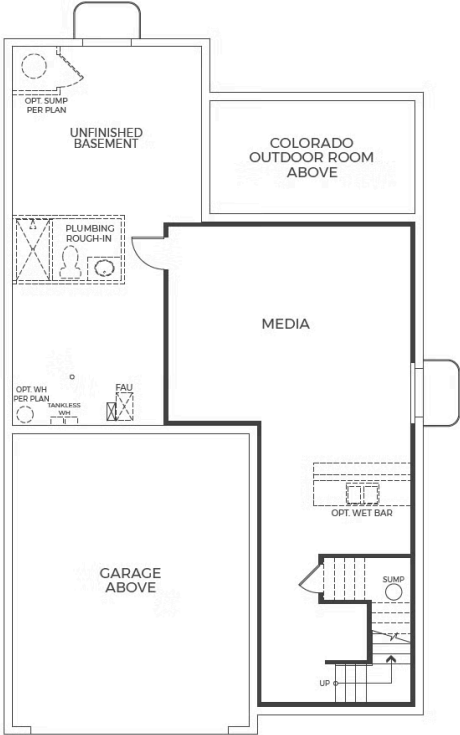
FESTIVAL PLAN 6 FLOOR PLAN

FESTIVAL • 50' LOTS
2,491 Sq. Ft. • 4 Bedrooms • 3.5 Baths

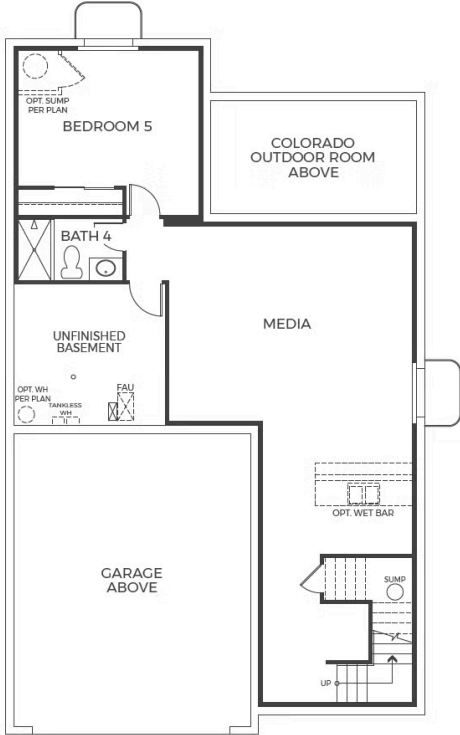
RESIDENCE 6



BASEMENT



OPTIONAL FINISHED
BASEMENT 1



OPTIONAL FINISHED
BASEMENT 2

1581 Winter Glow Drive

WINDSOR, CO 80550

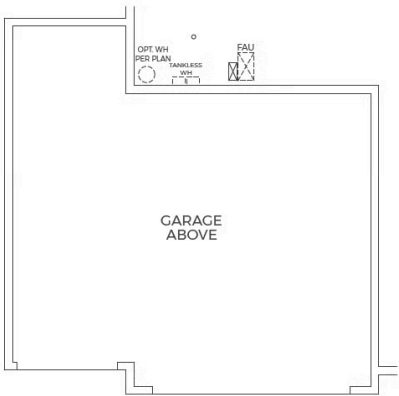
GET IN TOUCH
(970) 499-8222

FESTIVAL PLAN 6 FLOOR PLAN

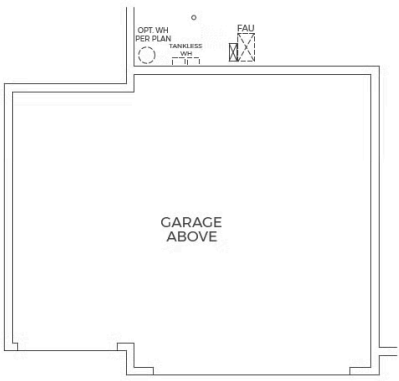
FESTIVAL • 50' LOTS

2,491 Sq. Ft. • 4 Bedrooms • 3.5 Baths

RESIDENCE 6



OPTIONAL OVERSIZED 3-CAR
GARAGE AT BASEMENT



OPTIONAL 3-CAR
GARAGE AT BASEMENT

TRUMARKHOMES

1581 Winter Glow Drive

WINDSOR, CO 80550

GET IN TOUCH
(970) 499-8222

FESTIVAL PLAN 6 FLOOR PLAN



TRUMARKHOMES

1581 Winter Glow Drive

WINDSOR, CO 80550

GET IN TOUCH
(970) 499-8222

FESTIVAL PLAN 6 FLOOR PLAN



TRUMARKHOMES

1581 Winter Glow Drive

WINDSOR, CO 80550

GET IN TOUCH
(970) 499-8222

FESTIVAL PLAN 6 FLOOR PLAN

