

# 1674 Winter Glow Drive

WINDSOR, CO 80550



## PRICE

**\$821,159**

## PLAN

Plan 4

## LOCATION

Festival at RainDance

## FEATURES

-  5 Bedrooms
-  4.0 Bathrooms
-  2,875 Sq. Ft.
-  3 Car Garage

This is your moment! First Year Rate 3.25% (6.535% APR)\* [Learn More ->](#)

Homesite 1617 at Festival at RainDance by Trumark Homes is a contemporary two-story home offering 2,875 Sq. Ft. of living space with five bedrooms and four baths. This beautiful home features an inviting porch with a secondary bedroom and bathroom off the front of the home. Beyond the entrance hall is the gourmet kitchen featuring a spacious walk-in pantry and a center preparation island that overlooks the light-filled 20-foot open-ceiling great room. The kitchen includes 42" deluxe shaker style white cabinetry, quartz countertops with tile backsplash, stainless steel appliance package with a 5-burner gas cooktop, a convection oven, a built-in microwave, and a dishwasher. This room connects to the covered outdoor patio.

Upstairs, you'll find a loft connecting the three secondary bedrooms, one with an ensuite bath. The primary suite offers a stunning, spa-like bathroom with dual sinks, a walk-in shower, and freestanding tub. An expansive walk-in closet completes the primary suite. The home comes with LVP flooring on the majority of the main floor, luxurious carpet in bedrooms, deluxe primary shower tile with tile shower pan, spacious 10-foot ceilings on the main floor and 9' on the upper floor and basement, tankless water heater, dual AC, full unfinished basement with bath and wet bar rough-ins, insulated steel garage door, and much more!

### Key Features:

- South facing homesite orientation
- 2,875 finished sq. ft, 5 bedrooms, 4 bathrooms
- Diana II design finish package
- Covered outdoor patio
- Luxurious primary suite with freestanding tub
- 3-Car tandem garage



# 1674 Winter Glow Drive

WINDSOR, CO 80550

## FESTIVAL AT RAINDANCE

### RESIDENCE 4 - ELEVATIONS

4 – 6 Bedrooms • 4 – 5 Baths • 2-Car Tandem Garage  
Approx. 2,875 – 3,863 Sq. Ft.



ELEVATION A – MODERN FARMHOUSE




ELEVATION B – MODERN PRAIRIE



ELEVATION C – MODERN MOUNTAIN

1554 Winter Glow Drive, Windsor, CO 80550 | 970.446.8804 | [RainDanceSales@trumarkco.com](mailto:RainDanceSales@trumarkco.com) | [VIP-RainDance.com](http://VIP-RainDance.com)

This is not an offer to sell but is intended for information only. Trumark Homes reserves the right to make modifications to materials, specifications, brand names, appliances, fixtures, plans, pricing, various fees, designs, scheduling, and delivery of homes without prior notice. Square footages are approximate. Plans and dimensions may contain minor variations from floor to floor. Floor plans are for representational purposes only. Homes shown do not represent actual homesites. Rendering and photographs are artists' conceptions and do not reflect actual homesites. Models do not display racial preference Updated 01/14/2025. 

TRUMARKHOMES

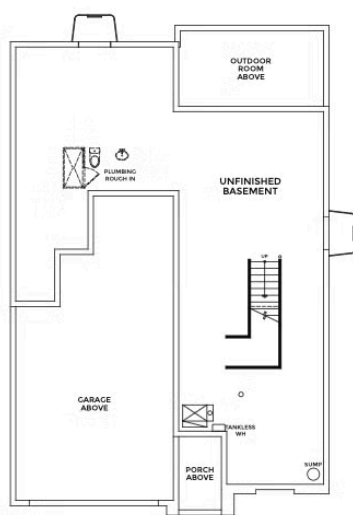
# 1674 Winter Glow Drive

WINDSOR, CO 80550

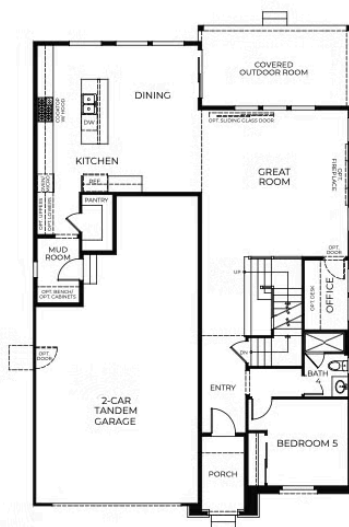
## FESTIVAL AT RAINDANCE

### RESIDENCE 4

4 – 6 Bedrooms • 4 – 5 Baths • 2-Car Tandem Garage  
Approx. 2,875 – 3,863 Sq. Ft.



BASEMENT




FIRST FLOOR



SECOND FLOOR

1554 Winter Glow Drive, Windsor, CO 80550 | 970.446.8804 | RainDanceSales@trumarkco.com | VIP-RainDance.com

This is not an offer to sell but is intended for information only. Trumark Homes reserves the right to make modifications to materials, specifications, brand names, appliances, fixtures, plans, pricing, various fees, designs, scheduling, and delivery of homes without prior notice. Square footages are approximate. Plans and dimensions may contain minor variations from floor to floor. Floor plans are for representational purposes only. Homes shown do not represent actual homesites. Rendering and photographs are artists' conceptions and do not reflect actual homesites. Models do not display racial preference Updated 01/14/2025. 

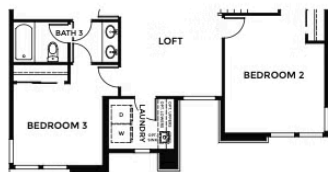
# 1674 Winter Glow Drive

WINDSOR, CO 80550

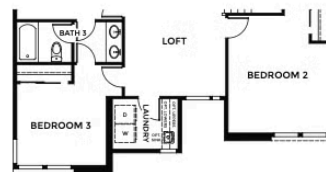
## FESTIVAL AT RAINDANCE

### RESIDENCE 4 - ELEVATIONS B & C

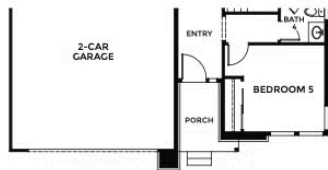
4 – 6 Bedrooms • 4 – 5 Baths • 2-Car Tandem Garage  
Approx. 2,875 – 3,863 Sq. Ft.



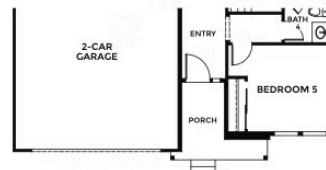
SECOND FLOOR  
ELEVATION B



SECOND FLOOR  
ELEVATION C



FIRST FLOOR  
ELEVATION B



FIRST FLOOR  
ELEVATION C

1554 Winter Glow Drive, Windsor, CO 80550 | 970.446.8804 | RainDanceSales@trumarkco.com | VIP-RainDance.com

This is not an offer to sell but is intended for information only. Trumark Homes reserves the right to make modifications to materials, specifications, brand names, appliances, fixtures, plans, pricing, various fees, designs, scheduling, and delivery of homes without prior notice. Square footages are approximate. Plans and dimensions may contain minor variations from floor to floor. Floor plans are for representational purposes only. Homes shown do not represent actual homesites. Rendering and photographs are artists' conceptions and do not reflect actual homesites. Models do not display racial preference Updated 01/14/2025.

TRUMARKHOMES

# 1674 Winter Glow Drive

WINDSOR, CO 80550

GET IN TOUCH  
(970) 499-8222

