

1609 Winter Glow Drive

WINDSOR, CO 80550



PRICE

\$832,879

PLAN

Plan 4

LOCATION

Festival at RainDance

FEATURES

 5 Bedrooms

 4.0 Bathrooms

 2,875 Sq. Ft.

 3 Car Garage

Homesite 6 at Festival at RainDance by Trumark Homes is a contemporary two-story home offering 2,875 Sq. Ft. of living space with five bedrooms and four baths. The home features an inviting porch with a secondary bedroom and bathroom off the front of the home. Beyond the entrance hall is the gourmet kitchen featuring a spacious walk-in pantry and a center preparation island that overlooks the light-filled, open-ceiling great room. The kitchen includes 42" deluxe white shaker style cabinetry, quartz countertops with tile backsplash, matte black fixtures, stainless steel appliance package with a 5-burner gas cooktop, a convection oven, a built-in microwave, and a dishwasher. This room connects to the covered outdoor room, great for entertaining.

Upstairs you'll find a teen room connecting the three secondary bedrooms, one with an ensuite bath. The primary suite offers a stunning, spa-like bathroom with dual sinks, a walk-in shower, and a freestanding tub. An expansive walk-in closet completes the primary suite. The home comes with LVP flooring in the entry, kitchen, dining and great room, luxurious carpet in bedrooms, deluxe primary shower tile with mosaic tile shower pan, spacious 10-foot ceilings on the main floor and 9' on the upper floor and basement, tankless water heater, dual A/C, insulated steel garage door, and much more!

1609 Winter Glow Drive

WINDSOR, CO 80550

FESTIVAL PLAN 4 FLOOR PLAN

FESTIVAL • 50' LOTS

2,875 – 3,863 Sq. Ft. • 4 – 6 Bedrooms • 4 – 5 Baths

RESIDENCE 4



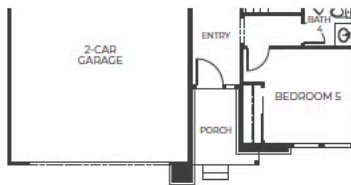
ELEVATION A – MODERN FARMHOUSE



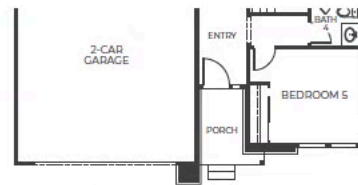
ELEVATION B – MODERN PRAIRIE



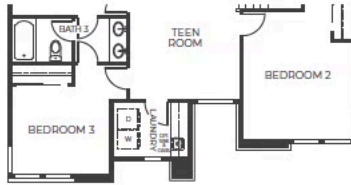
ELEVATION C – MODERN MOUNTAIN



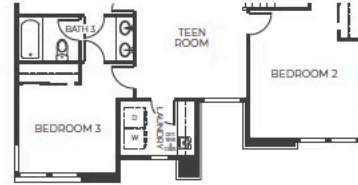
ELEVATION B
FIRST FLOOR



ELEVATION C
FIRST FLOOR



ELEVATION B
SECOND FLOOR

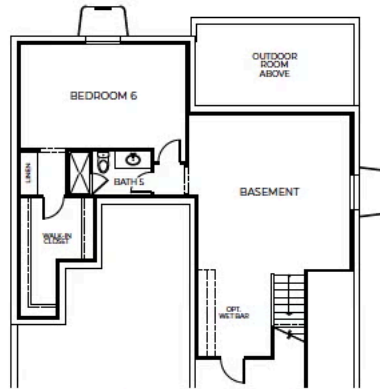
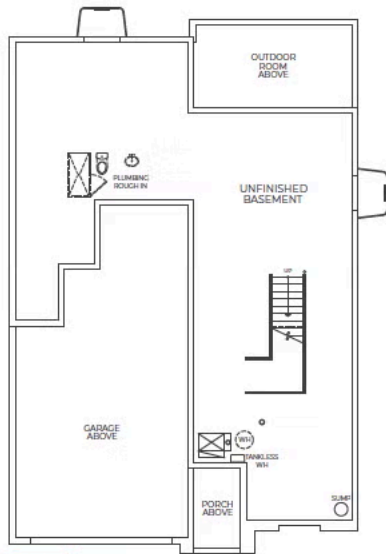


ELEVATION C
SECOND FLOOR

FESTIVAL PLAN 4 FLOOR PLAN

FESTIVAL • 50' LOTS
2,875 – 3,863 Sq. Ft. • 4 – 6 Bedrooms • 4 – 5 Baths

RESIDENCE 4



OPTIONAL FINISHED BASEMENT
Approx. 988 Sq. Ft.



BASEMENT WALK-OUT WITH BEDROOM 6

1609 Winter Glow Drive

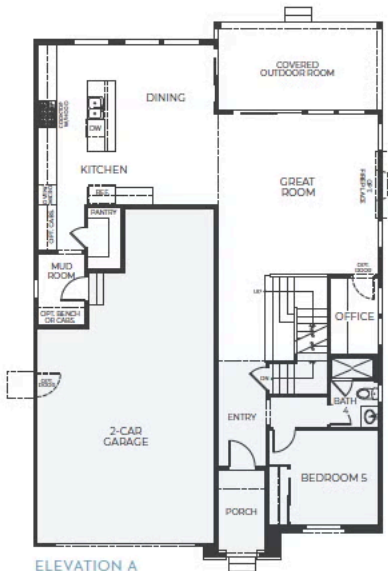
WINDSOR, CO 80550

FESTIVAL PLAN 4 FLOOR PLAN

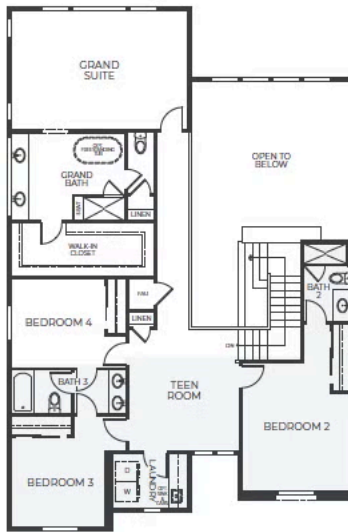
FESTIVAL • 50' LOTS

2,875 - 3,863 Sq. Ft. • 4 - 6 Bedrooms • 4 - 5 Baths

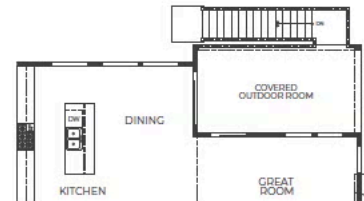
RESIDENCE 4



ELEVATION A
FIRST FLOOR
Approx. 1,285 Sq. Ft.



ELEVATION A
SECOND FLOOR
Approx. 1,590 Sq. Ft.



OPTIONAL FIRST-FLOOR WALK-OUT

TRUMARKHOMES

1609 Winter Glow Drive

WINDSOR, CO 80550

GET IN TOUCH
(970) 499-8222

FESTIVAL PLAN 4 FLOOR PLAN

