

1625 Winter Glow Drive

WINDSOR, CO 80550



PRICE
\$809,123

PLAN
Plan 3

LOCATION
Festival at RainDance

FEATURES

-  4 Bedrooms
-  3.0 Bathrooms
-  2,752 Sq. Ft.
-  3 Car Garage

This is your moment! First Year Rate 3.25% (6.535% APR)* [Learn More ->](#)

Homesite2 at Festival at RainDance by Trumark Homes features a 3-car tandem garage off the front of the home. The expansive two-story plan offers 2,752 Sq. Ft. of living space with four bedrooms and three baths. Beyond the entrance hall is the gourmet kitchen featuring a spacious walk-in pantry and a center preparation island. This island overlooks the open-ceiling dining room and the great room with a contemporary fireplace. The kitchen includes 42" white shaker-style cabinetry, Jocelyn 2 package, Matte Black fixtures, stainless steel appliance package with 5-burner gas cooktop, convection oven, built-in microwave, and dishwasher. This room conveniently connects to the office and the covered outdoor deck with stairs to the backyard that backs to open space and a community trail.

Upstairs, you'll find the primary suite with a luxurious, spa-like bathroom with a walk-in shower and freestanding tub. An expansive walk-in closet completes the primary suite. The home comes with LVP flooring on the majority of the main level, luxurious carpet in bedrooms, deluxe primary shower tile with tile shower pan, spacious 9 or 10-foot ceilings, insulated steel 3-car garage door, tankless water heater and dual AC, dual furnace, and much more!

1625 Winter Glow Drive

WINDSOR, CO 80550

FESTIVAL AT RAINDANCE

RESIDENCE 3 - ELEVATIONS

4 – 6 Bedrooms • 3 – 5 Baths • 3-Car Tandem Garage
Approx. 2,752 – 3,786 Sq. Ft.



ELEVATION A – MODERN FARMHOUSE



ELEVATION B – MODERN PRAIRIE



ELEVATION C – MODERN MOUNTAIN

1554 Winter Glow Drive, Windsor, CO 80550 | 970.446.8804 | RainDanceSales@trumarkco.com | VIP-RainDance.com

This is not an offer to sell but is intended for information only. Trumark Homes reserves the right to make modifications to materials, specifications, brand names, appliances, fixtures, plans, pricing, various fees, designs, scheduling, and delivery of homes without prior notice. Square footages are approximate. Plans and dimensions may contain minor variations from floor to floor. Floor plans are for representational purposes only. Homes shown do not represent actual homesites. Rendering and photographs are artists' conceptions and do not reflect actual homesites. Models do not display racial preference Updated 01/14/2025.

TRUMARKHOMES

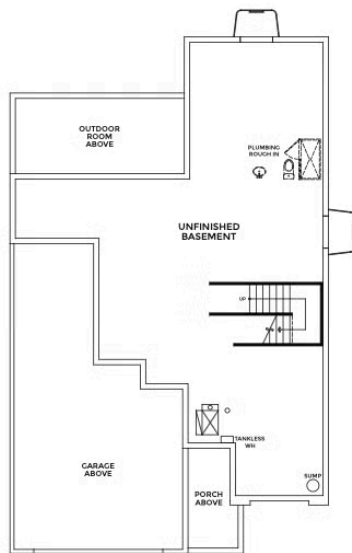
1625 Winter Glow Drive

WINDSOR, CO 80550

FESTIVAL AT RAINDANCE

RESIDENCE 3

4 – 6 Bedrooms • 3 – 5 Baths • 3-Car Tandem Garage
Approx. 2,752 – 3,786 Sq. Ft.



BASEMENT



FIRST FLOOR



SECOND FLOOR

1554 Winter Glow Drive, Windsor, CO 80550 | 970.446.8804 | RainDanceSales@trumarkco.com | VIP-RainDance.com

This is not an offer to sell but is intended for information only. TrumarkHomes reserves the right to make modifications to materials, specifications, brand names, appliances, fixtures, plans, pricing, various fees, designs, scheduling, and delivery of homes without prior notice. Square footages are approximate. Plans and dimensions may contain minor variations from floor to floor. Floor plans are for representational purposes only. Homes shown do not represent actual homesites. Rendering and photographs are artists' conceptions and do not reflect actual homesites. Models do not display racial preference Updated 01/14/2025.

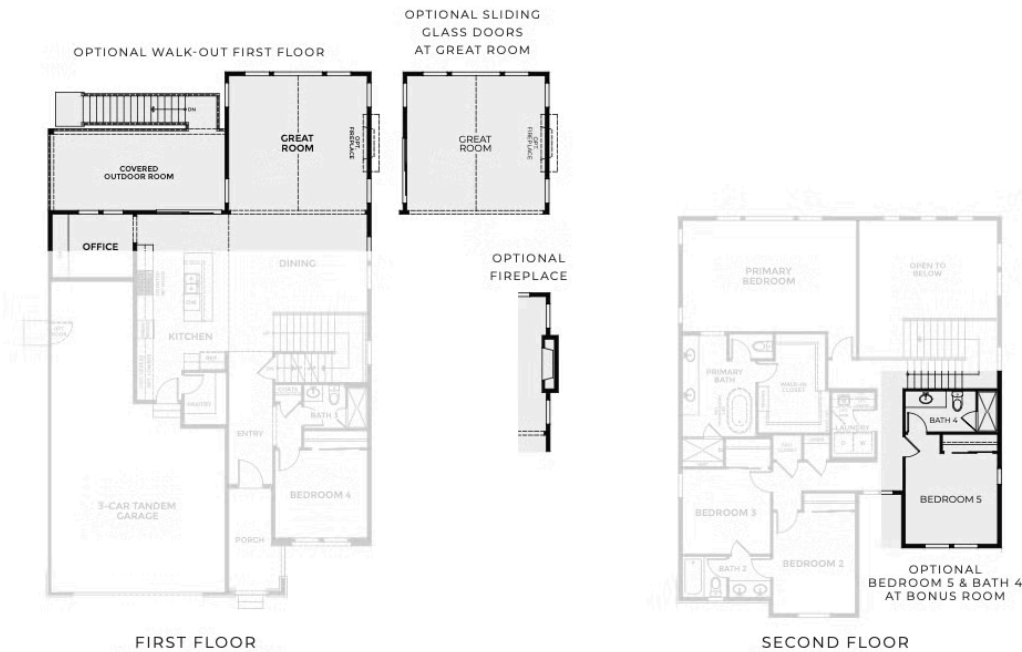
1625 Winter Glow Drive

WINDSOR, CO 80550

FESTIVAL AT RAINDANCE

RESIDENCE 3 - FIRST & SECOND FLOOR OPTIONS

4 – 6 Bedrooms • 3 – 5 Baths • 3-Car Tandem Garage
Approx. 2,752 – 3,786 Sq. Ft.



1554 Winter Glow Drive, Windsor, CO 80550 | 970.446.8804 | RainDanceSales@trumarkco.com | VIP-RainDance.com

This is not an offer to sell but is intended for information only. Trumark Homes reserves the right to make modifications to materials, specifications, brand names, appliances, fixtures, plans, pricing, various fees, designs, scheduling, and delivery of homes without prior notice. Square footages are approximate. Plans and dimensions may contain minor variations from floor to floor. Floor plans are for representational purposes only. Homes shown do not represent actual homesites. Rendering and photographs are artists' conceptions and do not reflect actual homesites. Models do not display racial preference Updated 01/14/2025.

TRUMARKHOMES

TRUMARKHOMES

1625 Winter Glow Drive

WINDSOR, CO 80550

GET IN TOUCH
(970) 499-8222



TRUMARKHOMES

1625 Winter Glow Drive

WINDSOR, CO 80550

GET IN TOUCH
(970) 499-8222



TRUMARKHOMES

1625 Winter Glow Drive

WINDSOR, CO 80550

GET IN TOUCH
(970) 499-8222

