

# 1589 Winter Glow Drive

WINDSOR, CO 80550



PRICE  
**\$843,900**

PLAN  
Plan 3

LOCATION  
Festival at RainDance

## FEATURES

-  4 Bedrooms
-  3.0 Bathrooms
-  2,752 Sq. Ft.
-  3 Car Garage

Unlock Spring Savings! Year Fixed Rate As Low As 4.875% (4.918% APR)\* [Learn More ->](#)

Homesite 3, block 15 at Festival at RainDance by Trumark Homes features a walk-out basement backing to a green belt and community trail. The stunning two-story plan offers 2,752 Sq. Ft. of living space with four bedrooms, three baths and a 3-car tandem garage. Beyond the entrance hall is the gourmet kitchen featuring a spacious walk-in pantry and a center preparation island. This island overlooks the 20-foot ceiling dining room and vaulted great room, complete with a modern gas fireplace. The kitchen includes 42" deluxe fog-stained shaker style cabinetry, Calacatta Jubilee quartz countertops with tile backsplash, stainless steel appliance package with 5-burner gas cooktop, convection oven, built-in microwave, and dishwasher. This room conveniently connects to the flex office and the covered outdoor deck with a staircase leading to the fully fenced and landscaped backyard.

Upstairs, you'll find an oversized loft and two secondary bedrooms connected by an ensuite bathroom with dual sinks. The primary suite offers a luxurious, spa-like bathroom with a walk-in shower and freestanding tub. An expansive walk-in closet completes the primary suite. The home comes with matte black fixtures, warm 5" natural stained engineered hardwood flooring in the entry and kitchen, luxurious carpet in bedrooms, deluxe primary shower tile with mosaic tile shower pan, spacious 9 or 10 foot ceilings, insulated steel garage door, tankless water heater and AC, and much more!



# 1589 Winter Glow Drive

WINDSOR, CO 80550

## FESTIVAL PLAN 3 FLOOR PLAN

FESTIVAL • 50' LOTS

2,752 – 3,786 Sq. Ft. • 4 – 6 Bedrooms • 3 – 5 Baths

RESIDENCE 3



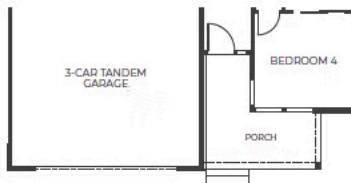
ELEVATION A – MODERN FARMHOUSE



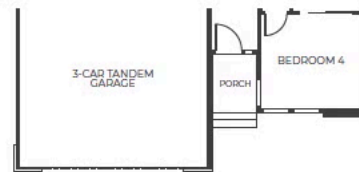
ELEVATION B – MODERN PRAIRIE



ELEVATION C – MODERN MOUNTAIN



ELEVATION B  
FIRST FLOOR



ELEVATION C  
FIRST FLOOR



ELEVATION B  
SECOND FLOOR



ELEVATION C  
SECOND FLOOR

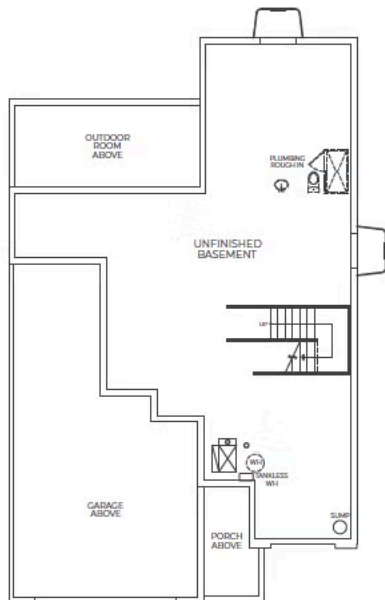
# 1589 Winter Glow Drive

WINDSOR, CO 80550

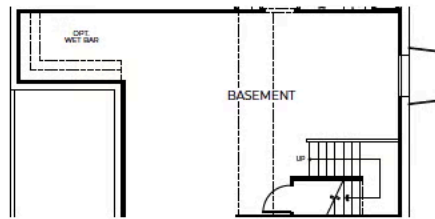
## FESTIVAL PLAN 3 FLOOR PLAN

FESTIVAL • 50' LOTS  
2,752 – 3,786 Sq. Ft. • 4 – 6 Bedrooms • 3 – 5 Baths

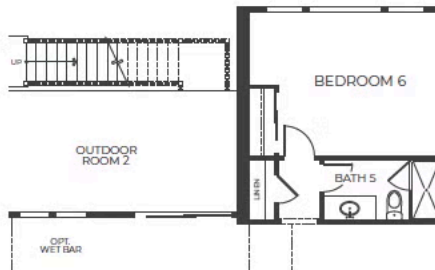
RESIDENCE 3



ELEVATION A  
BASEMENT



OPTIONAL  
FINISHED BASEMENT



BASEMENT WALK-OUT WITH  
BEDROOM 6 AND BATH 5  
Approx. 1,034 Sq. Ft.

# 1589 Winter Glow Drive

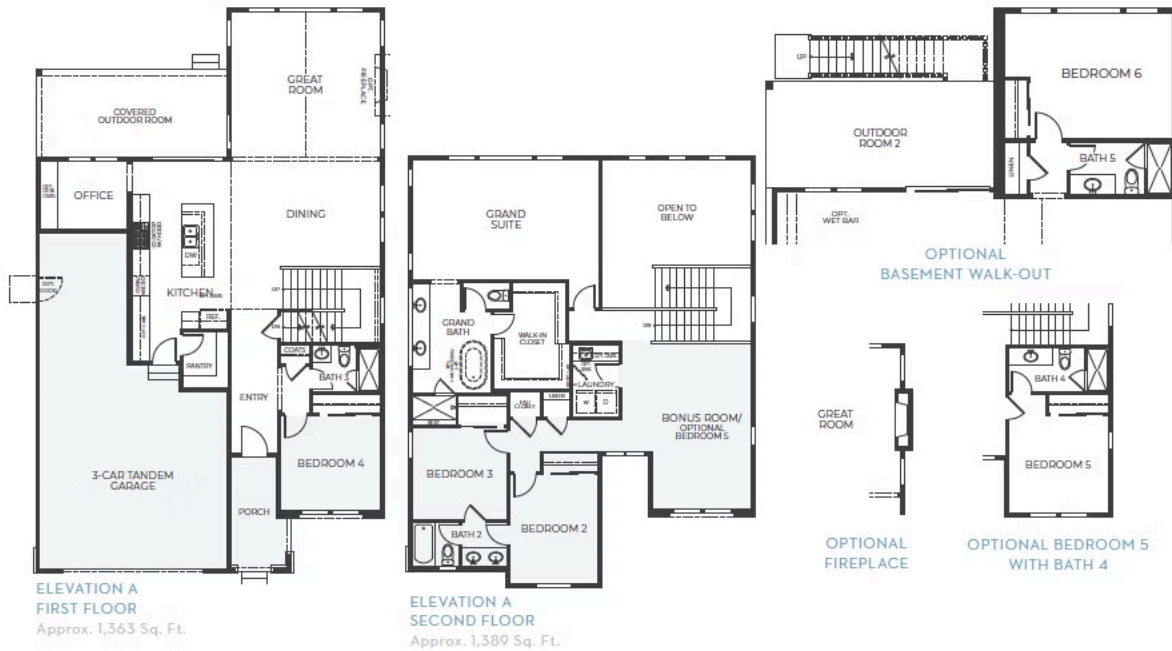
WINDSOR, CO 80550

## FESTIVAL PLAN 3 FLOOR PLAN

FESTIVAL • 50' LOTS

2,752 – 3,786 Sq. Ft. • 4 – 6 Bedrooms • 3 – 5 Baths

RESIDENCE 3



TRUMARKHOMES

# 1589 Winter Glow Drive

WINDSOR, CO 80550

GET IN TOUCH  
(970) 499-8222

## FESTIVAL PLAN 3 FLOOR PLAN

