

# 1617 Winter Glow Drive

WINDSOR, CO 80550



PRICE  
**\$749,900**

PLAN  
Plan 2

LOCATION  
Festival at RainDance

FEATURES  
🛏 3 Bedrooms  
🚿 2 Ba, 1 Half Ba  
📏 2,230 Sq. Ft.  
🚗 2 Car Garage

Homesite 0414 at Festival at RainDance by Trumark Homes is a single-story home offering 2,230 finished square feet of living space. Designed with three bedrooms and two and a half bathrooms, this plan also includes a bright office with large windows, perfect for working or relaxing at home.

Upon entering through the hall, you'll find a chef's kitchen with white shaker-style cabinetry, a spacious walk-in pantry, and a center preparation island that overlooks the open-ceiling dining room and great room. The kitchen is complete with quartz countertops, a tile backsplash, and a stainless steel appliance package featuring a 5-burner gas cooktop, convection oven, built-in microwave, and dishwasher. From the main living space, step out to the covered patio that overlooks the backyard, creating the perfect spot for entertaining.

The primary suite offers a luxurious retreat with a spa-like bathroom that includes a freestanding tub, a walk-in shower, and an expansive walk-in closet. Additional highlights include LVP flooring with carpeted bedrooms, deluxe shower tile in the primary bath, an insulated steel garage door, a tankless water heater, and AC. The home also comes with an unfinished basement, a two-car garage, fencing, and a location directly across from the community park.



# 1617 Winter Glow Drive

WINDSOR, CO 80550

## FESTIVAL AT RAINDANCE

### RESIDENCE 2 - ELEVATIONS

3 – 5 Bedrooms • 2.5 – 4.5 Baths • 2-Car Garage  
Approx. 2,230 – 3,504 Sq. Ft.



ELEVATION A – MODERN FARMHOUSE




ELEVATION B – MODERN PRAIRIE



ELEVATION C – MODERN MOUNTAIN

1554 Winter Glow Drive, Windsor, CO 80550 | 970.446.8804 | RainDanceSales@trumarkco.com | VIP-RainDance.com

This is not an offer to sell but is intended for information only. Trumark Homes reserves the right to make modifications to materials, specifications, brand names, appliances, fixtures, plans, pricing, various fees, designs, scheduling, and delivery of homes without prior notice. Square footages are approximate. Plans and dimensions may contain minor variations from floor to floor. Floor plans are for representational purposes only. Homes shown do not represent actual homesites. Rendering and photographs are artists' conceptions and do not reflect actual homesites. Models do not display racial preference Updated 01/14/2025. 

TRUMARKHOMES

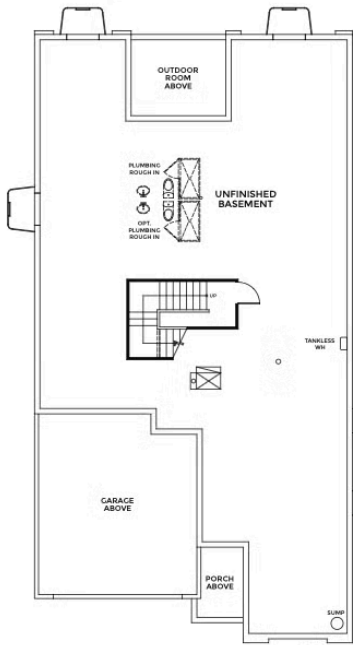
# 1617 Winter Glow Drive

WINDSOR, CO 80550

## FESTIVAL AT RAINDANCE

### RESIDENCE 2

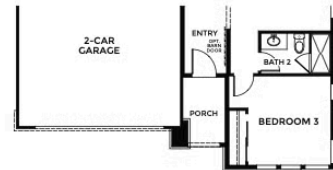
3 – 5 Bedrooms • 2.5 – 4.5 Baths • 2-Car Garage  
Approx. 2,230 – 3,504 Sq. Ft.



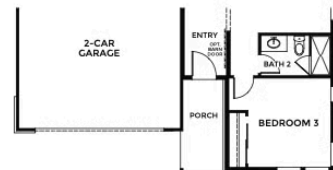
BASEMENT



FIRST FLOOR



ELEVATION B



ELEVATION C

1554 Winter Glow Drive, Windsor, CO 80550 | 970.446.8804 | RainDanceSales@trumarkco.com | VIP-RainDance.com

This is not an offer to sell but is intended for information only. Trumark Homes reserves the right to make modifications to materials, specifications, brand names, appliances, fixtures, plans, pricing, various fees, designs, scheduling, and delivery of homes without prior notice. Square footages are approximate. Plans and dimensions may contain minor variations from floor to floor. Floor plans are for representational purposes only. Homes shown do not represent actual homesites. Rendering and photographs are artists' conceptions and do not reflect actual homesites. Models do not display racial preference Updated 01/14/2025.

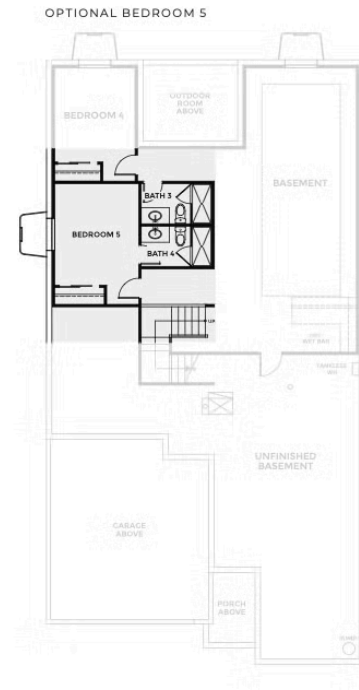
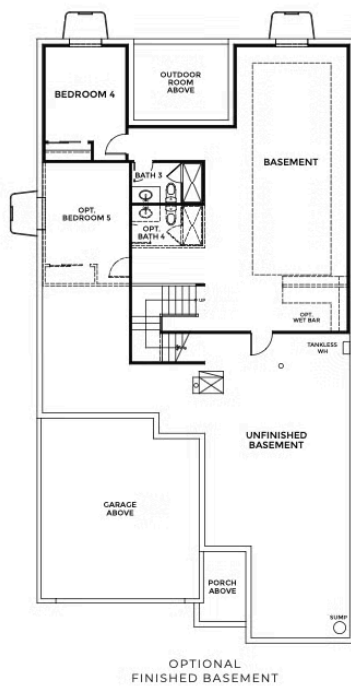
# 1617 Winter Glow Drive

WINDSOR, CO 80550

## FESTIVAL AT RAINDANCE

## RESIDENCE 2 - BASEMENT OPTIONS

3 – 5 Bedrooms • 2.5 – 4.5 Baths • 2-Car Garage  
Approx. 2,230 – 3,504 Sq. Ft.



1554 Winter Glow Drive, Windsor, CO 80550 | 970.446.8804 | RainDanceSales@trumarkco.com | VIP-RainDance.com

This is not an offer to sell but is intended for information only. Trumark Homes reserves the right to make modifications to materials, specifications, brand names, appliances, fixtures, plans, pricing, various fees, designs, scheduling, and delivery of homes without prior notice. Square footages are approximate. Plans and dimensions may contain minor variations from floor to floor. Floor plans are for representational purposes only. Homes shown do not represent actual homesites. Rendering and photographs are artists' conceptions and do not reflect actual homesites. Models do not display racial preference Updated 01/14/2025.

TRUMARK**HOMES**

# 1617 Winter Glow Drive

WINDSOR, CO 80550

GET IN TOUCH  
(970) 499-8222

