

Plan 2

FESTIVAL AT RAINDANCE

**PRICE**
\$699,000**FEATURES**

-  3 Bedrooms
-  2.5 Bathrooms
-  2,230 Sq. Ft.
-  2 Car Garage

Plan 2 at Festival at RainDance by Trumark Homes is a contemporary single-story home offering 2,230 Sq. Ft. of living space with three bedrooms and two and a half baths. The home features an inviting porch with secondary bedrooms and office just through the entrance hall. Beyond is the gourmet kitchen featuring a spacious walk-in pantry and a center preparation island. This island includes dual sinks and overlooks the dining and great rooms, complete with an optional gas fireplace. The kitchen includes 42" deluxe cabinetry, quartz countertops with tile backsplash, stainless steel appliance package with 5-burner gas cooktop, convection oven, built-in microwave, and dishwasher.

The great room opens up to the covered outdoor room. The primary suite, located just off the great room offers a stunning, spa-like bathroom with a walk-in shower and optional freestanding tub. An expansive walk-in closet completes the primary suite.

The optional finished basement features an additional secondary bedroom. Additional basement options are also available including an optional wet bar for easy entertaining, and walk out staircase leading to the covered outdoor room above. The home comes with LVP flooring in the entry and kitchen, luxurious carpet in bedrooms, deluxe primary shower tile, spacious 10-foot ceilings on the main floor and 9' on the upper floor and basement, insulated steel garage door, tankless water heater and AC, and much more!

Plan 2

FESTIVAL AT RAINDANCE

FESTIVAL AT RAINDANCE

RESIDENCE 2 - ELEVATIONS

3 – 5 Bedrooms • 2.5 – 4.5 Baths • 2-Car Garage
Approx. 2,230 – 3,504 Sq. Ft.



ELEVATION A – MODERN FARMHOUSE



ELEVATION B – MODERN PRAIRIE



ELEVATION C – MODERN MOUNTAIN

1554 Winter Glow Drive, Windsor, CO 80550 | 970.446.8804 | RainDanceSales@trumarkco.com | VIP-RainDance.com

This is not an offer to sell but is intended for information only. Trumark Homes reserves the right to make modifications to materials, specifications, brand names, appliances, fixtures, plans, pricing, various fees, designs, scheduling, and delivery of homes without prior notice. Square footages are approximate. Plans and dimensions may contain minor variations from floor to floor. Floor plans are for representational purposes only. Homes shown do not represent actual homesites. Rendering and photographs are artists' conceptions and do not reflect actual homesites. Models do not display racial preference Updated 01/14/2025.

TRUMARKHOMES

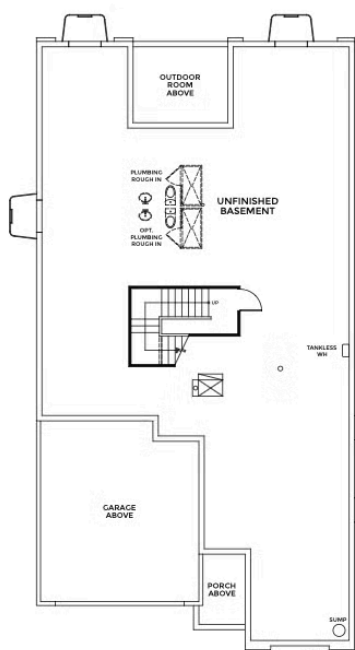
Plan 2

FESTIVAL AT RAINDANCE

FESTIVAL AT RAINDANCE

RESIDENCE 2

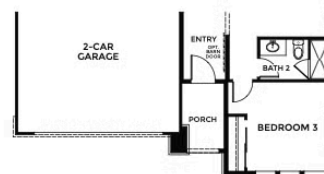
3 – 5 Bedrooms • 2.5 – 4.5 Baths • 2-Car Garage
Approx. 2,230 – 3,504 Sq. Ft.



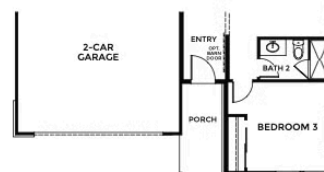
BASEMENT



FIRST FLOOR



ELEVATION B



ELEVATION C

1554 Winter Glow Drive, Windsor, CO 80550 | 970.446.8804 | RainDanceSales@trumarkco.com | VIP-RainDance.com

This is not an offer to sell but is intended for information only. Trumark Homes reserves the right to make modifications to materials, specifications, brand names, appliances, fixtures, plans, pricing, various fees, designs, scheduling, and delivery of homes without prior notice. Square footages are approximate. Plans and dimensions may contain minor variations from floor to floor. Floor plans are for representational purposes only. Homes shown do not represent actual homesites. Rendering and photographs are artists' conceptions and do not reflect actual homesites. Models do not display racial preference Updated 01/14/2025.

TRUMARKHOMES

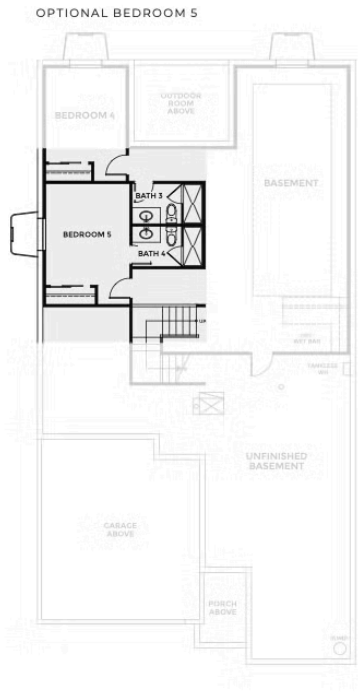
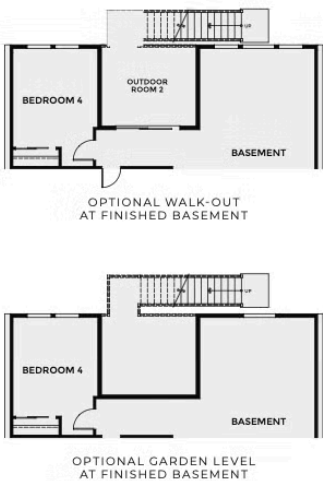
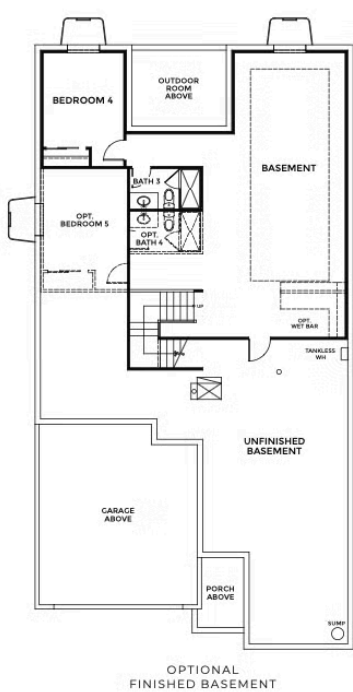
Plan 2

FESTIVAL AT RAINDANCE

FESTIVAL
AT RAINDANCE

RESIDENCE 2 - BASEMENT OPTIONS

3 – 5 Bedrooms • 2.5 – 4.5 Baths • 2-Car Garage
Approx. 2,230 – 3,504 Sq. Ft.



1554 Winter Glow Drive, Windsor, CO 80550 | 970.446.8804 | RainDanceSales@trumarkco.com | VIP-RainDance.com

This is not an offer to sell but is intended for information only. Trumark Homes reserves the right to make modifications to materials, specifications, brand names, appliances, fixtures, plans, pricing, various fees, designs, scheduling, and delivery of homes without prior notice. Square footages are approximate. Plans and dimensions may contain minor variations from floor to floor. Floor plans are for representational purposes only. Homes shown do not represent actual homesites. Rendering and photographs are artists' conceptions and do not reflect actual homesites. Models do not display racial preference Updated 01/14/2025.

TRUMARKHOMES

Plan 2

FESTIVAL AT RAINDANCE

GET IN TOUCH
(970) 499-8222

