

# 1683 Sundown Run Drive

WINDSOR, CO 80550



PRICE  
**\$749,900**

PLAN  
Plan 1

LOCATION  
Festival at RainDance

## FEATURES

-  3 Bedrooms
-  2 Ba, 1 Half Ba
-  2,046 Sq. Ft.
-  2 Car Garage

Homesite 0317 at Festival at RainDance by Trumark Homes is a single-story home offering 2,046 finished square feet of living space. Past the entry hall and two secondary bedrooms, the plan opens to a spacious kitchen with a walk-in pantry and a center preparation island overlooking the dining area and great room. The kitchen features 42" deluxe cabinetry, quartz countertops with a tile backsplash, and a stainless steel appliance package including a 5-burner gas cooktop, convection oven, built-in microwave, and dishwasher.

The primary suite includes a spa-like bathroom with a walk-in shower and an expansive walk-in closet. This home features the Diana Plus Design Finish Package with luxury vinyl plank flooring, carpeted bedrooms, deluxe primary shower tile, an insulated steel garage door, a tankless water heater, air conditioning, and an unfinished basement. Additional highlights include an office with a large window, a covered deck overlooking the backyard, a 2-car garage, full yard landscape and fencing included.



# 1683 Sundown Run Drive

WINDSOR, CO 80550

## FESTIVAL AT RAINDANCE

### RESIDENCE 1 - ELEVATIONS

3 – 5 Bedrooms • 2.5 – 3.5 Baths • 2-Car Garage  
Approx. 2,046 – 3,358 Sq. Ft.



ELEVATION A – MODERN FARMHOUSE



ELEVATION B – MODERN PRAIRIE



ELEVATION C – MODERN MOUNTAIN

1554 Winter Glow Drive, Windsor, CO 80550 | 970.446.8804 | RainDanceSales@trumarkco.com | VIP-RainDance.com

This is not an offer to sell but is intended for information only. Trumark Homes reserves the right to make modifications to materials, specifications, brand names, appliances, fixtures, plans, pricing, various fees, designs, scheduling, and delivery of homes without prior notice. Square footages are approximate. Plans and dimensions may contain minor variations from floor to floor. Floor plans are for representational purposes only. Homes shown do not represent actual homesites. Rendering and photographs are artists' conceptions and do not reflect actual homesites. Models do not display racial preference Updated 01/14/2025.

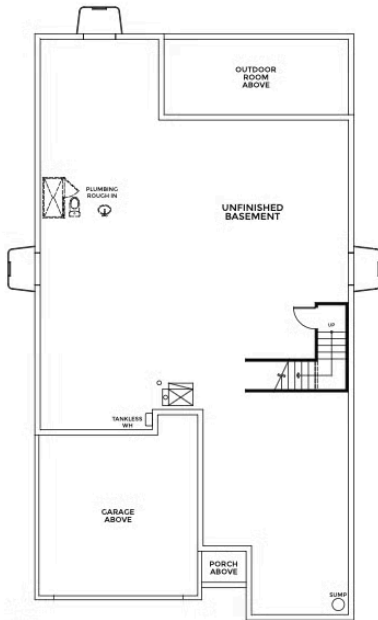
# 1683 Sundown Run Drive

WINDSOR, CO 80550

## FESTIVAL AT RAINDANCE

### RESIDENCE 1

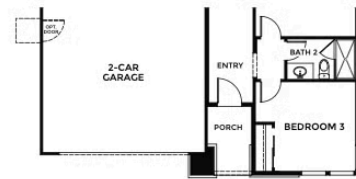
3 – 5 Bedrooms • 2.5 – 3.5 Baths • 2-Car Garage  
Approx. 2,046 – 3,358 Sq. Ft.



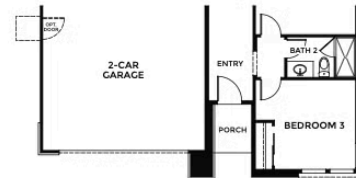
BASEMENT



FIRST FLOOR



ELEVATION B



ELEVATION C

1554 Winter Glow Drive, Windsor, CO 80550 | 970.446.8804 | RainDanceSales@trumarkco.com | VIP-RainDance.com

This is not an offer to sell but is intended for information only. Trumark Homes reserves the right to make modifications to materials, specifications, brand names, appliances, fixtures, plans, pricing, various fees, designs, scheduling, and delivery of homes without prior notice. Square footages are approximate. Plans and dimensions may contain minor variations from floor to floor. Floor plans are for representational purposes only. Homes shown do not represent actual homesites. Rendering and photographs are artists' conceptions and do not reflect actual homesites. Models do not display racial preference Updated 01/14/2025.

# 1683 Sundown Run Drive

WINDSOR, CO 80550

## FESTIVAL AT RAINDANCE

## RESIDENCE 1 - FIRST FLOOR OPTIONS

3 – 5 Bedrooms • 2.5 – 3.5 Baths • 2-Car Garage  
Approx. 2,046 – 3,358 Sq. Ft.

OPTIONAL WALK-OUT  
AT FIRST FLOOR

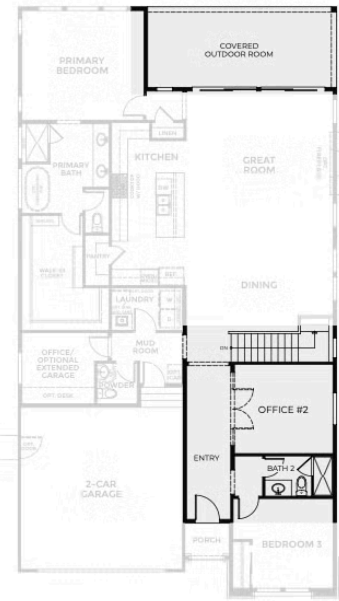


OPTIONAL  
FIREPLACE



OPTIONAL  
EXTENDED GARAGE

OPTIONAL SLIDING GLASS  
DOOR



OPTIONAL OFFICE  
AT BEDROOM 2

1554 Winter Glow Drive, Windsor, CO 80550 | 970.446.8804 | RainDanceSales@trumarkco.com | VIP-RainDance.com

This is not an offer to sell but is intended for information only. Trumark Homes reserves the right to make modifications to materials, specifications, brand names, appliances, fixtures, plans, pricing, various fees, designs, scheduling, and delivery of homes without prior notice. Square footages are approximate. Plans and dimensions may contain minor variations from floor to floor. Floor plans are for representational purposes only. Homes shown do not represent actual homesites. Rendering and photographs are artists' conceptions and do not reflect actual homesites. Models do not display racial preference Updated 01/14/2025.

TRUMARK**HOMES**

# 1683 Sundown Run Drive

WINDSOR, CO 80550

GET IN TOUCH  
(970) 499-8222

