

1661 Winter Glow Dr

WINDSOR, CO 80550



PRICE
\$759,900

PLAN
Plan 1

LOCATION
Festival at RainDance

FEATURES

-  3 Bedrooms
-  2 Ba, 1 Half Ba
-  2,046 Sq. Ft.
-  2 Car Garage

Homesite 17 at Festival at RainDance by Trumark Homes is a single-story home offering 2,046 finished square feet of living space. Upon entering this plan past the entrance hall and two bedrooms is the spacious kitchen featuring a walk-in pantry and a center preparation island. This island overlooks the open-ceiling dining room and great room. The kitchen includes 42" deluxe cabinetry, quartz countertops with tile backsplash, stainless steel appliance package with 5-burner gas cooktop, convection oven, built-in microwave, and dishwasher.

The primary suite includes a luxurious, spa-like bathroom with walk-in shower and expansive walk-in closet. The home comes with LVP flooring, carpeted bedrooms, deluxe primary shower tile, insulated steel garage door, tankless water heater, AC, and much more!

Key Features include 3 bedrooms, 2.5 bathrooms, office with large window, spacious kitchen with slate stained shaker-style cabinetry, fireplace with tile surround, heather plus design finish package, covered deck, unfinished basement, extended 2-car garage, and front & rear yard landscaping.

1661 Winter Glow Dr

WINDSOR, CO 80550

FESTIVAL AT RAINDANCE

RESIDENCE 1 - ELEVATIONS

3 – 5 Bedrooms • 2.5 – 3.5 Baths • 2-Car Garage
Approx. 2,046 – 3,358 Sq. Ft.



ELEVATION A – MODERN FARMHOUSE




ELEVATION B – MODERN PRAIRIE



ELEVATION C – MODERN MOUNTAIN

1554 Winter Glow Drive, Windsor, CO 80550 | 970.446.8804 | RainDanceSales@trumarkco.com | VIP-RainDance.com

This is not an offer to sell but is intended for information only. Trumark Homes reserves the right to make modifications to materials, specifications, brand names, appliances, fixtures, plans, pricing, various fees, designs, scheduling, and delivery of homes without prior notice. Square footages are approximate. Plans and dimensions may contain minor variations from floor to floor. Floor plans are for representational purposes only. Homes shown do not represent actual homesites. Rendering and photographs are artists' conceptions and do not reflect actual homesites. Models do not display racial preference Updated 01/14/2025. 

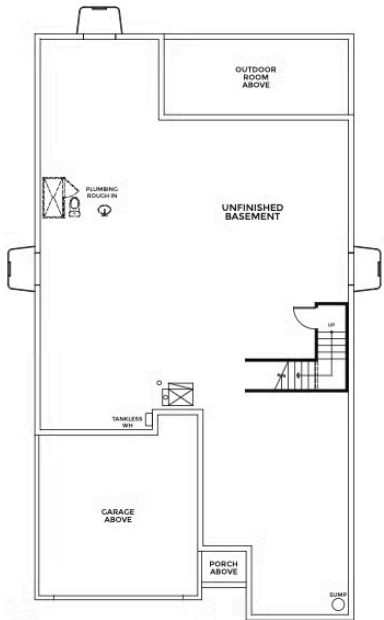
1661 Winter Glow Dr

WINDSOR, CO 80550

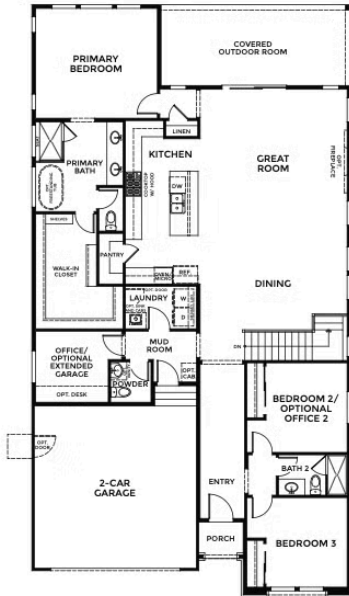
FESTIVAL AT RAINDANCE

RESIDENCE 1

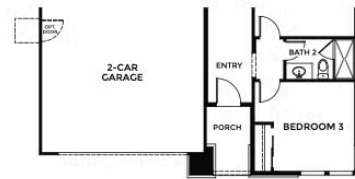
3 – 5 Bedrooms • 2.5 – 3.5 Baths • 2-Car Garage
Approx. 2,046 – 3,358 Sq. Ft.



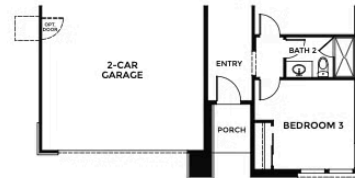
BASEMENT



FIRST FLOOR



ELEVATION B



ELEVATION C

1554 Winter Glow Drive, Windsor, CO 80550 | 970.446.8804 | RainDanceSales@trumarkco.com | VIP-RainDance.com

This is not an offer to sell but is intended for information only. Trumark Homes reserves the right to make modifications to materials, specifications, brand names, appliances, fixtures, plans, pricing, various fees, designs, scheduling, and delivery of homes without prior notice. Square footages are approximate. Plans and dimensions may contain minor variations from floor to floor. Floor plans are for representational purposes only. Homes shown do not represent actual homesites. Rendering and photographs are artists' conceptions and do not reflect actual homesites. Models do not display racial preference Updated 01/14/2025.

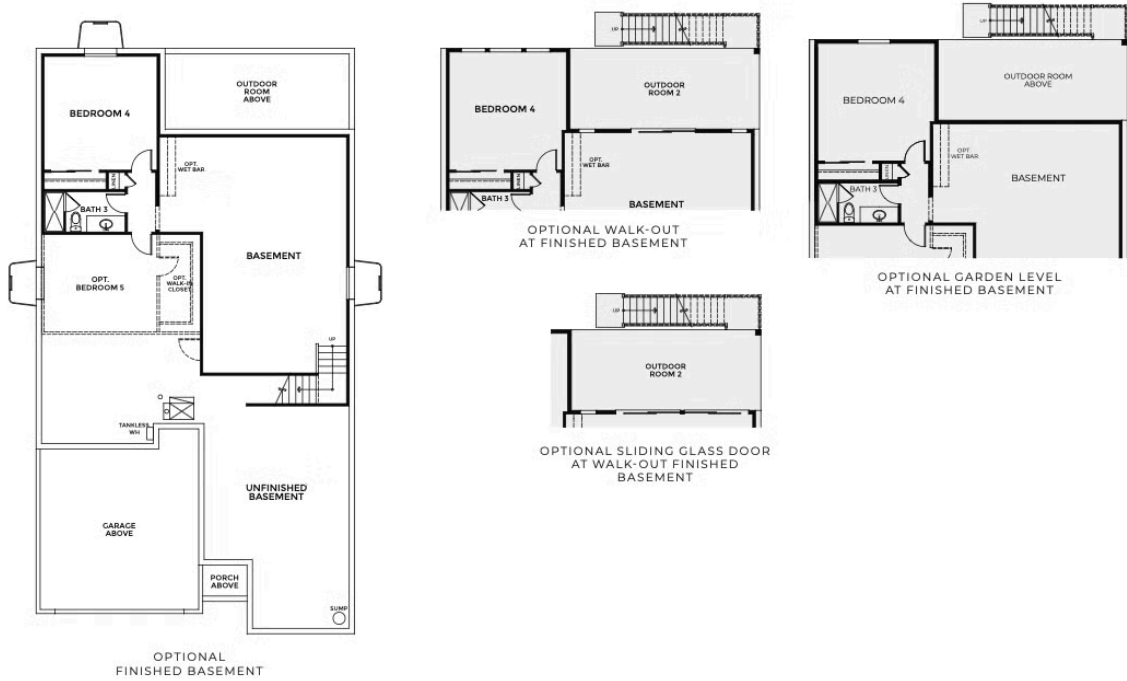
1661 Winter Glow Dr

WINDSOR, CO 80550

FESTIVAL AT RAINDANCE

RESIDENCE 1 - BASEMENT OPTIONS

3 - 5 Bedrooms • 2.5 - 3.5 Baths • 2-Car Garage
Approx. 2,046 - 3,358 Sq. Ft.



1554 Winter Glow Drive, Windsor, CO 80550 | 970.446.8804 | RainDanceSales@trumarkco.com | VIP-RainDance.com

This is not an offer to sell but is intended for information only. Trumark Homes reserves the right to make modifications to materials, specifications, brand names, appliances, fixtures, plans, pricing, various fees, designs, scheduling, and delivery of homes without prior notice. Square footages are approximate. Plans and dimensions may contain minor variations from floor to floor. Floor plans are for representational purposes only. Homes shown do not represent actual homesites. Rendering and photographs are artists' conceptions and do not reflect actual homesites. Models do not display racial preference Updated 01/14/2025.