

1579 Winter Glow Drive

WINDSOR, CO 80550



PRICE

\$859,900

PLAN

Plan 1

LOCATION

Festival at RainDance

FEATURES

-  4 Bedrooms
-  3.5 Bathrooms
-  3,105 Sq. Ft.
-  2 Car Garage

Homesite 6 at Festival at RainDance by Trumark Homes is a flexible single-story home offering 3,105 SQ. FT. of living space with four bedrooms and three and a half baths. The home features an inviting porch with secondary bedrooms and a shared bathroom off the front of the home. Past the entrance hall is the gourmet kitchen, featuring a spacious walk-in pantry and a center preparation island. The island overlooks the dining and great rooms, complete with a gas fireplace. The kitchen includes 42" deluxe dusk stained shaker style cabinetry, quartz countertops with tile backsplash, stainless steel appliance package with 5-burner gas cooktop, convection oven, built-in microwave, and dishwasher.

The great room opens up to the covered outdoor deck with stairs to the backyard. The primary suite, located just off the great room offers a contemporary, spa-like bathroom with dual sinks, walk-in shower, and a freestanding tub. An expansive walk-in closet completes the primary suite.

The walkout finished basement comes with a sliding glass door to an oversized concrete patio, a large rec room, an additional secondary bedroom, bath and rough in for a wetbar. Enjoy a second outdoor living space from the walkout basement. The home comes with 7 1/2" engineered hardwood flooring throughout the entry and kitchen, luxurious carpet in bedrooms, deluxe primary shower tile with mosaic tile shower pan, spacious 10-foot ceilings on the main floor and 9' in the basement, insulated steel garage door, tankless water heater and AC, and much more!

1579 Winter Glow Drive

WINDSOR, CO 80550

FESTIVAL PLAN 1 FLOOR PLAN

FESTIVAL • 50' LOTS

2,046 - 3,358 Sq. Ft. • 3 - 5 Bedrooms • 2.5 - 3.5 Baths

RESIDENCE 1



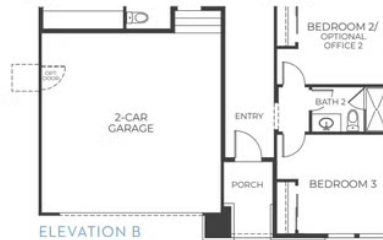
ELEVATION A - MODERN FARMHOUSE



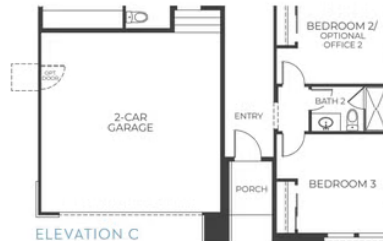
ELEVATION B - MODERN PRAIRIE



ELEVATION C - MODERN MOUNTAIN



ELEVATION B
FIRST FLOOR



ELEVATION C
FIRST FLOOR

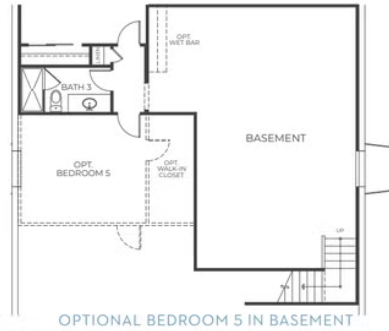
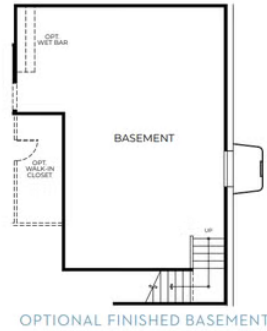
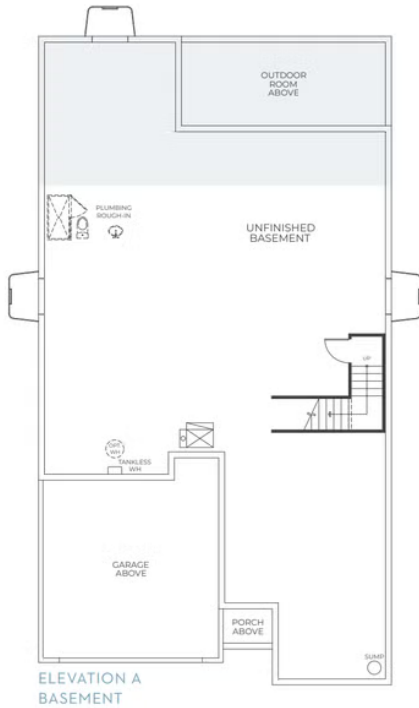
1579 Winter Glow Drive

WINDSOR, CO 80550

FESTIVAL PLAN 1 FLOOR PLAN

FESTIVAL • 50' LOTS
2,046 – 3,358 Sq. Ft. • 3 – 5 Bedrooms • 2.5 – 3.5 Baths

RESIDENCE 1



1579 Winter Glow Drive

WINDSOR, CO 80550

FESTIVAL PLAN 1 FLOOR PLAN

FESTIVAL • 50' LOTS
2,046 - 3,358 Sq. Ft. • 3 - 5 Bedrooms • 2.5 - 3.5 Baths

RESIDENCE 1

