

The Grayling

ACADIA AT RAINDANCE



PRICE
\$1,430,000

FEATURES

-  3 Bedrooms
-  3.5 Bathrooms
-  3,178 Sq. Ft.
-  3 Car Garage

The Grayling Plan at Acadia at RainDance by Trumark Homes is a well-designed, single-story home offering up to 4,986 finished sq. ft. of space with 3-5 bedrooms and 3.5-4.5 baths. Leading up to the home, you are greeted by a spacious courtyard and porch. Just off the formal entry of the home, you'll find an office and laundry room with sink.

Past the entry is the airy, light-filled dining area, open kitchen, and great room. The gourmet kitchen features a center preparation island, walk-in pantry, deluxe cabinetry, Quartz countertops with subway tile backsplash, stainless steel appliance package, and decorative fixtures. Both the dining room and the great room, complete with a modern gas fireplace, are connected to the outdoor room, making entertaining a breeze.

At the end of a long day, retreat to the grand suite featuring ample windows, a luxurious bathroom, walk-in shower, and an elegant freestanding tub. An oversized walk-in closet and a fitness room with a closet complete the primary suite. On the other side of the home is a flex room, and two secondary bedrooms both with ensuite bathrooms and walk-in closets.

The optional finished basement includes a fourth bedroom and full bathroom, and the option for an additional bedroom. The home comes with water-resistant laminate flooring throughout the entry and kitchen, luxurious carpet in bedrooms, spacious 10-foot ceilings throughout the main floor and basement, insulated steel garage doors, 3-car side-load garage and a space for your golf cart, tankless water heater and AC, and much more.

All homes at Acadia are situated on beautiful 1-acre lots close to a neighborhood park and a stone's throw away from RainDance National Golf Club. Don't miss your chance to live at this remarkable master-planned community in Windsor, Colorado!

The Grayling

ACADIA AT RAINDANCE

THE GRAYLING FLOOR PLAN

ACADIA • 1-ACRE LOTS
3,194 - 4,935 Sq. Ft., 3 - 5 Beds, 3.5 - 4.5 Baths



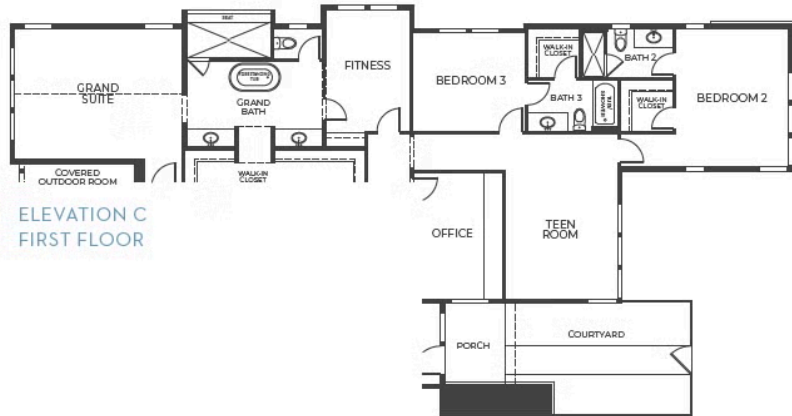
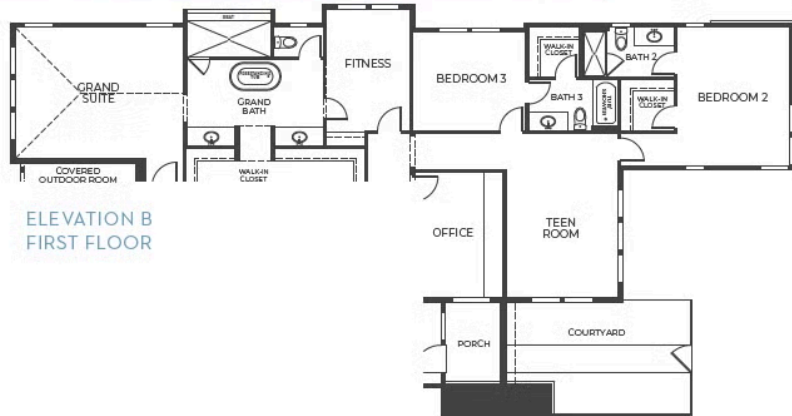
ELEVATION A - MODERN FARMHOUSE



ELEVATION B - MODERN PRAIRIE



ELEVATION C - MODERN MOUNTAIN



The Grayling

ACADIA AT RAINDANCE

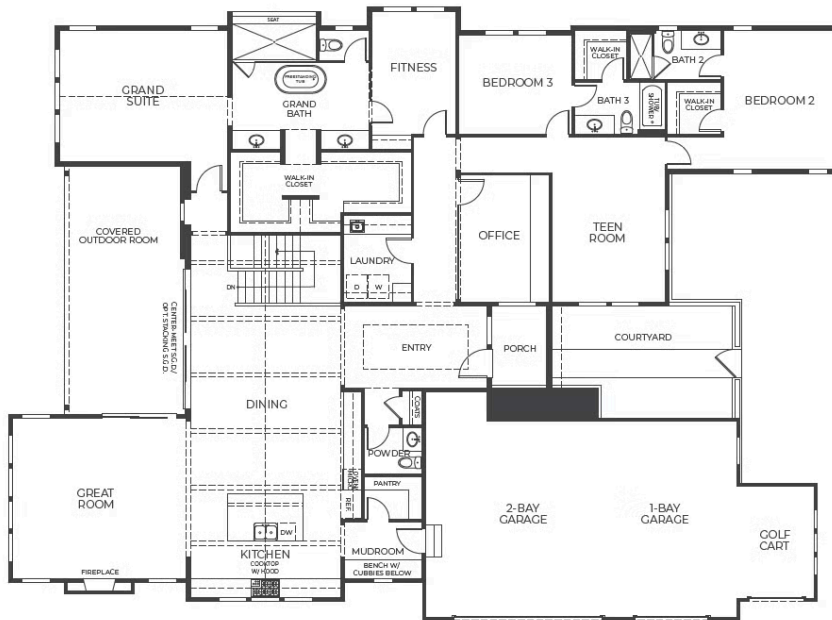
GET IN TOUCH
(970) 499-8222

THE GRAYLING FLOOR PLAN

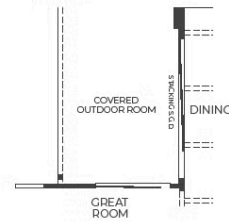
ACADIA • 1-ACRE LOTS

3,194 - 4,935 Sq. Ft., 3 - 5 Beds, 3.5 - 4.5 Baths

THE GRAYLING



FIRST FLOOR
Approx. 3,194 Sq. Ft.



OPTIONAL
STACKING S.G.D.
AT DINING

The Grayling

ACADIA AT RAINDANCE

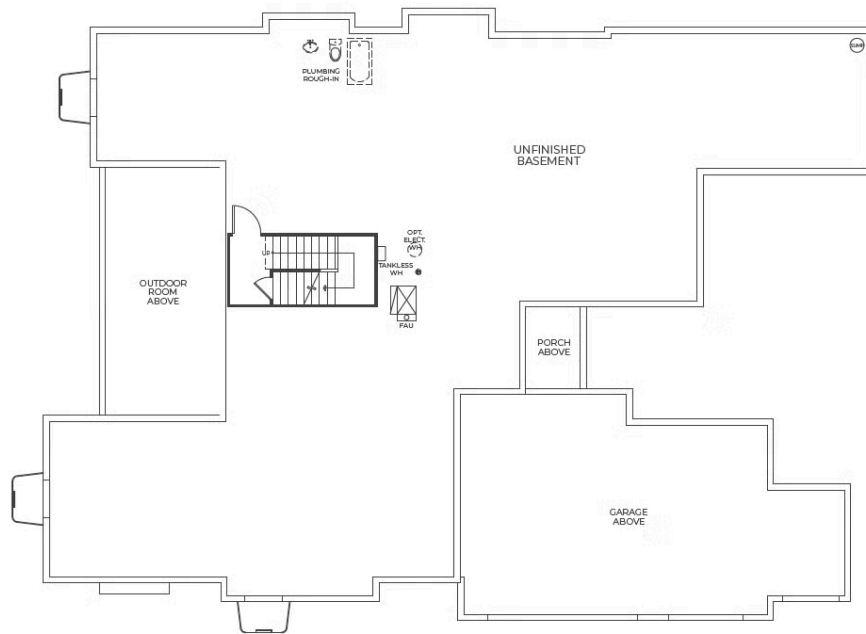
GET IN TOUCH
(970) 499-8222

THE GRAYLING FLOOR PLAN

ACADIA • 1-ACRE LOTS

3,194 – 4,935 Sq. Ft., 3 – 5 Beds, 3.5 – 4.5 Baths

THE GRAYLING



STANDARD BASEMENT

TRUMARK HOMES

The Grayling

ACADIA AT RAINDANCE

GET IN TOUCH
(970) 499-8222

THE GRAYLING FLOOR PLAN

