

5857 Kilbeggin Road

TIMNATH, CO 80547



PRICE
\$799,900

PLAN
Plan 6

LOCATION
Kitchel Lake at Serratoga Falls

FEATURES

-  4 Bedrooms
-  3.5 Bathrooms
-  2,491 Sq. Ft.
-  3 Car Garage

Homesite 9, a plan 6 at Kitchel Lake, is a contemporary two-story home offering up to 3,427 Sq. Ft. of living space with 4 bedrooms and 3.5 baths. Off the entrance hall and foyer is a charming office with an optional desk and optional door plus a glass wall. Just beyond is the gourmet kitchen featuring a spacious walk-in pantry, ample storage, and a center preparation island that overlooks the dining and great rooms. The kitchen includes 42" deluxe dusk matte cabinetry, light quartz countertops with tile backsplash, stainless steel appliance package with a 5-burner gas cooktop, a convection oven, a built-in microwave, and a dishwasher. This room connects to the large Colorado outdoor room making entertaining a breeze.

Upstairs you'll find a multi-functional teen room, three secondary bedrooms, and a laundry room with an optional sink. The grand suite offers a luxurious, spa-like bathroom with dual sinks, a walk-in shower, and an expansive walk-in closet. The home comes with 8" water-resistant laminate flooring in the entry and kitchen, luxurious carpet in bedrooms, spacious 9 or 10-foot ceilings, tankless water heater and AC, insulated steel garage door, and much more!

5857 Kilbeggin Road

TIMNATH, CO 80547

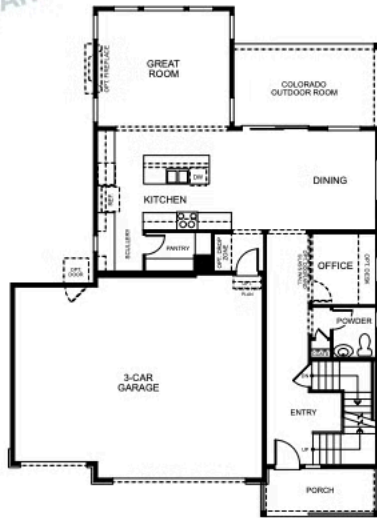
KITCHEL LAKE PLAN 6 FLOOR PLAN



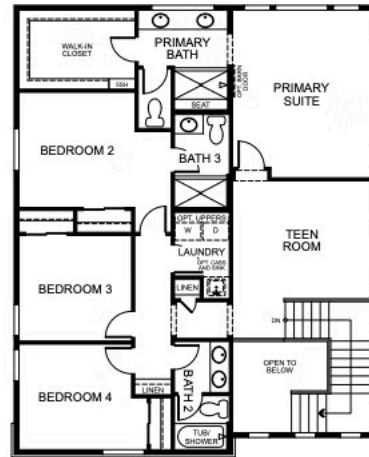
PLAN 6

4 - 5 Bedrooms • 3.5 - 4.5 Baths • 3-Car Garage
Approx. 2,491 - 3,438 Finished Sq. Ft.

PRELIMINARY




FIRST FLOOR



SECOND FLOOR

VIP-KITCHEL.COM



All information is for reference only. Prices, taxes and specifications subject to change and should be verified by all potential homebuyers. This is not an offer to sell but is intended for information only. The developer reserves the right to make modifications in materials, specifications, plans, pricing, various fees, designs, scheduling and delivery of homes without prior notice. All dimensions and square footages are approximate. Plan and dimensions may contain minor variations from floor to floor. CA DRE license no. 01877720. 



5857 Kilbeggin Road

TIMNATH, CO 80547

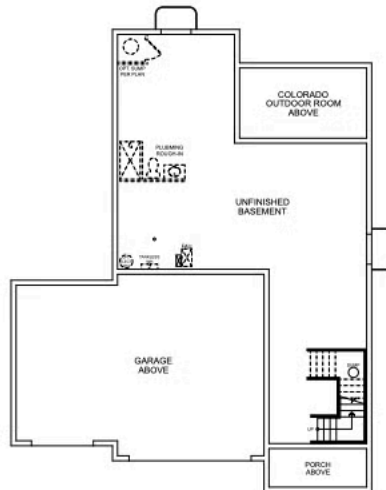
KITCHEL LAKE PLAN 6 FLOOR PLAN



PLAN 6

4 - 5 Bedrooms • 3.5 - 4.5 Baths • 3-Car Garage
Approx. 2,491 - 3,438 Finished Sq. Ft.

PRELIMINARY



BASEMENT

VIP-KITCHEL.COM



All information is for reference only. Prices, taxes and specifications subject to change and should be verified by all potential homebuyers. This is not an offer to sell but is intended for information only. The developer reserves the right to make modifications in materials, specifications, plans, pricing, various fees, designs, scheduling and delivery of homes without prior notice. All dimensions and square footages are approximate. Plan and dimensions may contain minor variations from floor to floor. CA DRE license no. 01877720. ©



5857 Kilbeggin Road

TIMNATH, CO 80547

KITCHEL LAKE PLAN 6 FLOOR PLAN



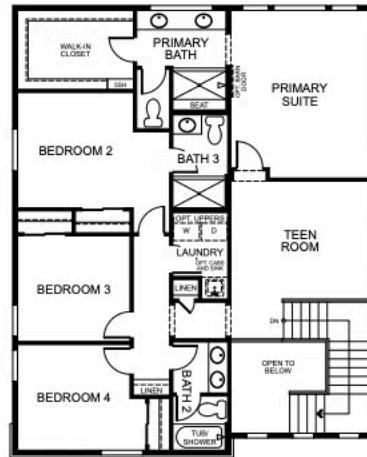
PLAN 6 - OPTIONS

4 - 5 Bedrooms • 3.5 - 4.5 Baths • 3-Car Garage
Approx. 2,491 - 3,438 Finished Sq. Ft.

PRELIMINARY



FIRST FLOOR



SECOND FLOOR

VIP-KITCHEL.COM



All information is for reference only. Prices, taxes and specifications subject to change and should be verified by all potential homebuyers. This is not an offer to sell but is intended for information only. The developer reserves the right to make modifications in materials, specifications, plans, pricing, various fees, designs, scheduling and delivery of homes without prior notice. All dimensions and square footages are approximate. Plan and dimensions may contain minor variations from floor to floor. CA DRE license no. 01877720.

TRUMARK**HOMES**

5857 Kilbeggin Road

TIMNATH, CO 80547

GET IN TOUCH
(970) 499-8222

KITCHEL LAKE PLAN 6 FLOOR PLAN



TRUMARK**HOMES**

5857 Kilbeggin Road

TIMNATH, CO 80547

GET IN TOUCH
(970) 499-8222

KITCHEL LAKE PLAN 6 FLOOR PLAN



TRUMARK**HOMES**

5857 Kilbeggin Road

TIMNATH, CO 80547

GET IN TOUCH
(970) 499-8222

KITCHEL LAKE PLAN 6 FLOOR PLAN

