

1322 Alyssa Drive

TIMNATH, CO 80547



PRICE
\$799,900

PLAN
Plan 6

LOCATION
Kitchel Lake

FEATURES

-  4 Bedrooms
-  3.5 Bathrooms
-  2,491 Sq. Ft.
-  3 Car Garage

Lot 11, a Plan 6 at Kitchel Lake, is a contemporary two-story home offering up to 2,491 sq. ft. of living space with four bedrooms and three and a half baths. Beyond the entrance hall is the gourmet kitchen featuring a spacious walk-in pantry and a center preparation island that overlooks the light-filled, open-ceiling great room. The kitchen includes 42" deluxe cabinetry, marbled-look Quartz countertops, stainless steel appliance package with a 5-burner gas cooktop, a convection oven, a built-in microwave, and a dishwasher. This room connects to the covered outdoor room and the deck with a built-in BBQ gas line.

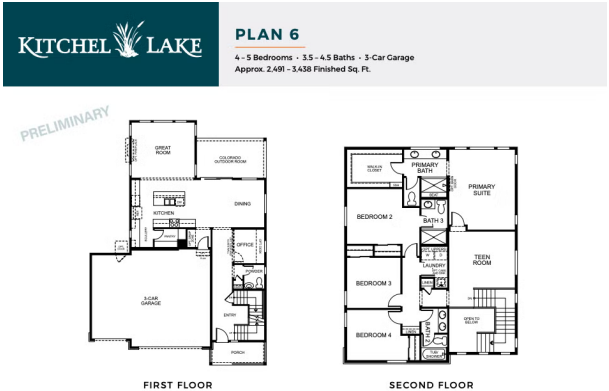
Upstairs you'll find a flex room and the three secondary bedrooms, the primary suite. The home comes with water-resistant Evoke plank flooring in the entry and kitchen, luxurious carpet in bedrooms, deluxe primary shower tile with mosaic tile shower pan, spacious 9 or 10-foot ceilings, tankless water heater and AC, insulated steel garage door, and much more. Reach out to us today to find out more about this beautiful home!

1322 Alyssa Drive

TIMNATH, CO 80547

GET IN TOUCH
(970) 499-8222


KITCHEL LAKE PLAN 6 FLOOR PLAN



TRUMARKHOMES All information is for reference only. Prices, fees and specifications subject to change and should be verified by all potential homebuyers. This is not an offer to sell but is intended for information only. The developer reserves the right to make modifications in materials, specifications, plans, pricing, without fees, designs, scheduling and delivery of homes without prior notice. All dimensions and square footages are approximate. Plan and dimensions may contain minor variations from floor to floor. Call 970.499.8222. ©

VIP-KITCHEL.COM

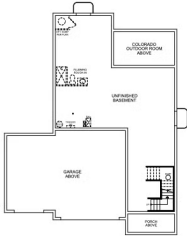
KITCHEL LAKE PLAN 6 FLOOR PLAN




PLAN 6

4 - 5 Bedrooms • 3.5 - 4.5 Baths • 3-Car Garage
Approx. 2,491 - 3,438 Finished Sq. Ft.

PRELIMINARY



BASEMENT



All information is for reference only. Prices, fees and specifications subject to change and should be verified by all potential homebuyers. This is not an offer to sell but is intended for information only. The developer reserves the right to make modifications in materials, specifications, plans, pricing, virtual tour, design, scheduling and delivery of homes without prior notice. All dimensions and square footages are approximate. Plan and dimensions may contain minor variations from floor to floor. CA DRE License No. 00877322. ©

VIP-KITCHEL.COM