

Plan 6

KITCHEL LAKE AT SERRATOGA FALLS



PRICE
\$750,000

FEATURES

-  4 Bedrooms
-  3.5 Bathrooms
-  2,491 Sq. Ft.
-  3 Car Garage

Plan 6 at Kitchel Lake is a contemporary two-story home offering up to 3,427 Sq. Ft. of living space with 4 bedrooms and 3.5 baths. Off the entrance hall and foyer is a charming office with an optional desk and optional door plus a glass wall. Just beyond is the gourmet kitchen featuring a spacious walk-in pantry, ample storage, and a center preparation island that overlooks the dining and great rooms. The kitchen includes 42" deluxe cabinetry, granite countertops with tile backsplash, stainless steel appliance package with a 5-burner gas cooktop, a convection oven, a built-in microwave, and a dishwasher. This room connects to the large Colorado outdoor room with the option for a large sliding glass door, making entertaining a breeze. Customize your basement, with options for a media room and wet bar, as well as an optional generously sized fifth bedroom and a bathroom.

Upstairs you'll find a multi-functional teen room, three secondary bedrooms, and a laundry room with an optional sink. The grand suite offers a luxurious, spa-like bathroom with dual sinks, a walk-in shower, and an expansive walk-in closet.

The home comes with water-resistant laminate flooring in the entry and kitchen, luxurious carpet in bedrooms, spacious 9 or 10-foot ceilings, tankless water heater and AC, insulated steel garage door, and much more!

Plan 6

KITCHEL LAKE AT SERRATOGA FALLS

KITCHEL LAKE PLAN 6 FLOOR PLAN

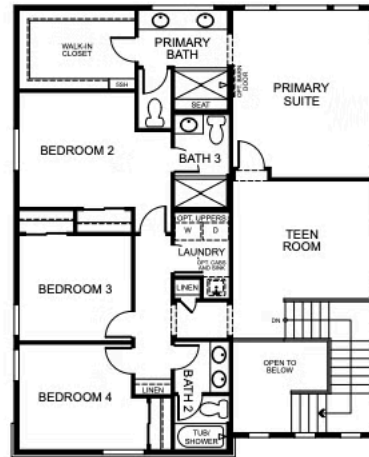


PLAN 6
4 - 5 Bedrooms • 3.5 - 4.5 Baths • 3-Car Garage
Approx. 2,491 - 3,438 Finished Sq. Ft.

PRELIMINARY




FIRST FLOOR



SECOND FLOOR

VIP-KITCHEL.COM



All information is for reference only. Prices, taxes and specifications subject to change and should be verified by all potential homebuyers. This is not an offer to sell but is intended for information only. The developer reserves the right to make modifications in materials, specifications, plans, pricing, various fees, designs, scheduling and delivery of homes without prior notice. All dimensions and square footages are approximate. Plan and dimensions may contain minor variations from floor to floor. CA DRE license no. 01877720. 

Plan 6

KITCHEL LAKE AT SERRATOGA FALLS

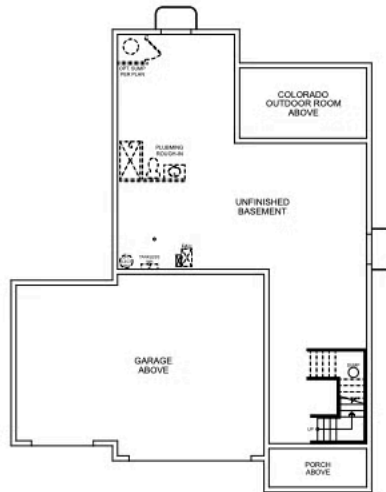
KITCHEL LAKE PLAN 6 FLOOR PLAN



PLAN 6

4 - 5 Bedrooms • 3.5 - 4.5 Baths • 3-Car Garage
Approx. 2,491 - 3,438 Finished Sq. Ft.

PRELIMINARY



BASEMENT

VIP-KITCHEL.COM



All information is for reference only. Prices, taxes and specifications subject to change and should be verified by all potential homebuyers. This is not an offer to sell but is intended for information only. The developer reserves the right to make modifications in materials, specifications, plans, pricing, various fees, designs, scheduling and delivery of homes without prior notice. All dimensions and square footages are approximate. Plan and dimensions may contain minor variations from floor to floor. CA DRE license no. 01877720. ©

Plan 6

KITCHEL LAKE AT SERRATOGA FALLS

KITCHEL LAKE PLAN 6 FLOOR PLAN



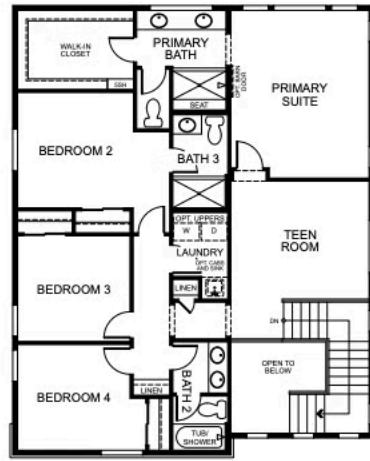
PLAN 6 - OPTIONS

4 - 5 Bedrooms • 3.5 - 4.5 Baths • 3-Car Garage
Approx. 2,491 - 3,438 Finished Sq. Ft.

PRELIMINARY




FIRST FLOOR



SECOND FLOOR



All information is for reference only. Prices, taxes and specifications subject to change and should be verified by all potential homebuyers. This is not an offer to sell but is intended for information only. The developer reserves the right to make modifications in materials, specifications, plans, pricing, various fees, designs, scheduling and delivery of homes without prior notice. All dimensions and square footages are approximate. Plan and dimensions may contain minor variations from floor to floor. CA DRE license no. 01877720. 

VIP-KITCHEL.COM

Plan 6

KITCHEL LAKE AT SERRATOGA FALLS

KITCHEL LAKE PLAN 6 FLOOR PLAN

Plan 6

KITCHEL LAKE AT SERRATOGA FALLS

KITCHEL LAKE PLAN 6 FLOOR PLAN

Plan 6

KITCHEL LAKE AT SERRATOGA FALLS

KITCHEL LAKE PLAN 6 FLOOR PLAN