

# 1352 Alyssa Drive

TIMNATH, CO 80547

GET IN TOUCH  
(970) 499-8222



PRICE  
**\$749,900**

PLAN  
Plan 5

LOCATION  
Kitchel Lake at Serratoga Falls

## FEATURES

-  4 Bedrooms
-  3.5 Bathrooms
-  3,079 Sq. Ft.
-  3 Car Garage

Homesite 6, a plan 5 at Kitchel Lake, is a contemporary two-story home offering up to 3,079 Sq. Ft. of living space with 3 bedrooms and 2.5 baths. The home features an inviting porch with an office and powder room off the front of the home. Beyond the entrance hall and foyer is the gourmet kitchen, a spacious walk-in pantry, ample storage, and a center preparation island that overlooks the dining and great rooms. The kitchen includes 42" deluxe white cabinetry with brushed nickel finishes, granite countertops with tile backsplash, stainless steel appliance package with a 5-burner gas cooktop, a convection oven, a built-in microwave, and a dishwasher. This room connects to the large Colorado outdoor room for easy entertaining. Downstairs you will find a finished basement with a media room and a fourth bedroom and bathroom.

Upstairs you'll find a multi-functional teen room, two secondary bedrooms, and a laundry room with an optional sink. The primary suite offers a luxurious, spa-like bathroom with dual sinks, a walk-in shower, and an expansive walk-in closet. The home comes with water-resistant laminate flooring in the entry and kitchen, luxurious carpet in bedrooms, finished basement, spacious 9 and 10-foot ceilings, tankless water heater and AC, insulated steel garage door, and much more! This home also comes with fully completed landscaping in the front and back.



# 1352 Alyssa Drive

TIMNATH, CO 80547

## KITCHEL LAKE PLAN 5 FLOOR PLAN



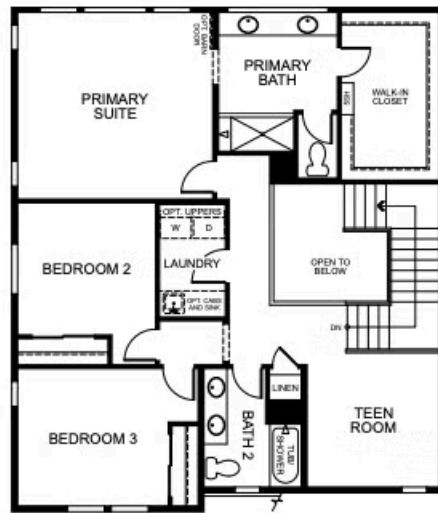
### PLAN 5

3 - 4 Bedrooms • 2.5 - 3.5 Baths • 3-Car Garage  
Approx. 2,268 - 3,079 Finished Sq. Ft.

PRELIMINARY




FIRST FLOOR



SECOND FLOOR

[VIP-KITCHEL.COM](http://VIP-KITCHEL.COM)



All information is for reference only. Prices, taxes and specifications subject to change and should be verified by all potential homebuyers. This is not an offer to sell but is intended for information only. The developer reserves the right to make modifications in materials, specifications, plans, pricing, various fees, designs, scheduling and delivery of homes without prior notice. All dimensions and square footages are approximate. Plan and dimensions may contain minor variations from floor to floor. CA DRE license no. 01877720. 



TRUMARKHOMES

**1352 Alyssa Drive**

TIMNATH, CO 80547

GET IN TOUCH  
**(970) 499-8222**

KITCHEL LAKE PLAN 5 FLOOR PLAN



TRUMARK**HOMES**

**1352 Alyssa Drive**

TIMNATH, CO 80547

GET IN TOUCH  
**(970) 499-8222**

KITCHEL LAKE PLAN 5 FLOOR PLAN



TRUMARK**HOMES**

**1352 Alyssa Drive**

TIMNATH, CO 80547

GET IN TOUCH  
**(970) 499-8222**

KITCHEL LAKE PLAN 5 FLOOR PLAN



TRUMARKHOMES

1352 Alyssa Drive

TIMNATH, CO 80547

GET IN TOUCH  
(970) 499-8222

KITCHEL LAKE PLAN 5 FLOOR PLAN

