

Plan 5

KITCHEL LAKE



PRICE
\$720,000

FEATURES

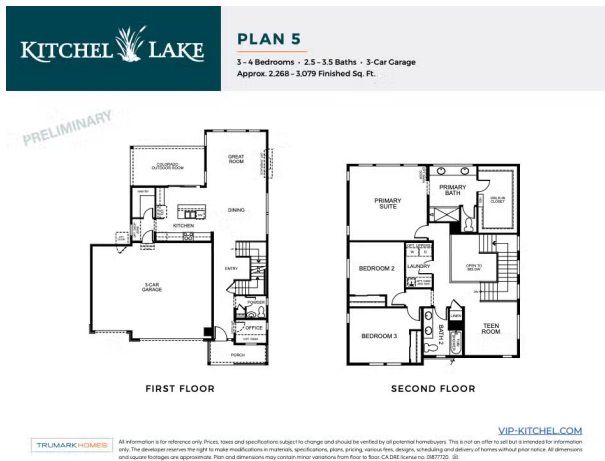
-  3 Bedrooms
-  2 Bathrooms
-  2,268 Sq. Ft.
-  3 Car Garage

Plan 5 at KitcheL Lake is a contemporary two-story home offering up to 3,079 Sq. Ft. of living space with 3 bedrooms and 2.5 baths. The home features an inviting porch with an office and powder room off the front of the home. Beyond the entrance hall and foyer is the gourmet kitchen featuring a spacious walk-in pantry, ample storage, and a center preparation island that overlooks the dining and great rooms. The kitchen includes 42" deluxe cabinetry, granite countertops with tile backsplash, stainless steel appliance package with a 5-burner gas cooktop, a convection oven, a built-in microwave, and a dishwasher. This room connects to the large Colorado outdoor room for easy entertaining. Customize your basement, with options for a media room with an optional wet bar, as well as a fourth bedroom and bathroom.

Upstairs you'll find a multi-functional teen room, two secondary bedrooms, and a laundry room with an optional sink. The primary suite offers a luxurious, spa-like bathroom with dual sinks, a walk-in shower, and an expansive walk-in closet.

The home comes with water-resistant laminate flooring in the entry and kitchen, luxurious carpet in bedrooms, finished basement, spacious 9 or 10-foot ceilings, tankless water heater and AC, insulated steel garage door, and much more!

KITCHEL LAKE PLAN 5 FLOOR PLAN

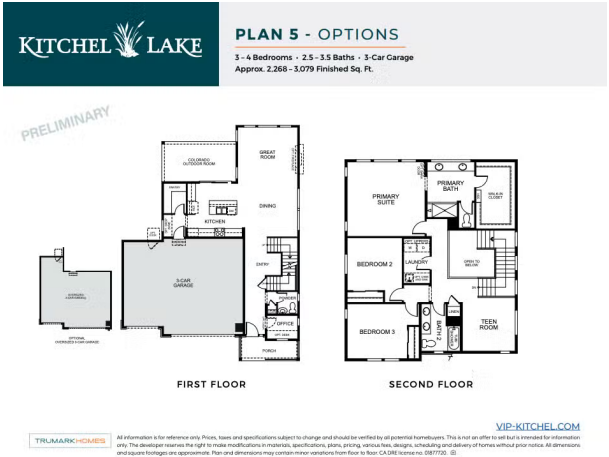


KITCHEL LAKE PLAN 5 FLOOR PLAN



Plan 5
KITCHEL LAKE

KITCHEL LAKE PLAN 5 FLOOR PLAN



Plan 5

KITCHEL LAKE

KITCHEL LAKE PLAN 5 FLOOR PLAN

Plan 5

KITCHEL LAKE

KITCHEL LAKE PLAN 5 FLOOR PLAN