

5833 Kilbeggin Road

TIMNATH, CO 80547



PRICE
\$965,834

PLAN
Plan 4

LOCATION
Kitchel Lake at Serratoga Falls

FEATURES

-  5 Bedrooms
-  4.0 Bathrooms
-  2,968 Sq. Ft.
-  4 Car Garage

Homesite 5, a plan 4 at Kitchel Lake, is a contemporary two-story home offering up to 2,968 Sq. Ft. of living space with five bedrooms and four baths. The home features an inviting porch with a secondary bedroom and ensuite bathroom off the front of the home. Beyond the entrance hall is the gourmet kitchen featuring a spacious walk-in pantry and a center preparation island that overlooks the light-filled, open-ceiling great room. The kitchen includes 42" Mocha Full Overlay cabinetry, Calacatta Elysio Quartz countertops with tile backsplash, stainless steel appliance package with a 5-burner gas cooktop, a convection oven, a built-in microwave, and a dishwasher. This room connects to the covered outdoor room making entertaining a breeze.

Upstairs you'll find a flex room connecting the three secondary bedrooms with ensuite baths. The primary suite offers a stunning, spa-like bathroom with dual sinks and a walk-in shower. An expansive walk-in closet completes the primary suite. The home comes with extensive plank laminate flooring in the entry and kitchen, fireplace w/ passive heat, luxurious carpet in bedrooms, deluxe primary shower tile with mosaic tile shower pan, spacious 9 or 10-foot ceilings, laundry cabinets and sink, tankless water heater and AC, a 4-car service garage, and much more! This home also comes with fully complete landscaping in the front and back.

5833 Kilbeggin Road

TIMNATH, CO 80547

KITCHEL LAKE PLAN 4 FLOOR PLAN



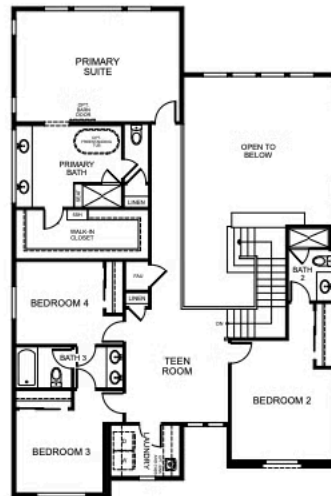
PLAN 4

5 - 6 Bedrooms · 4 - 5 Baths · 4-Car Garage (Tandem)
Approx. 2,968 - 3,870 Finished Sq. Ft.

PRELIMINARY



FIRST FLOOR



SECOND FLOOR

VIP-KITCHEL.COM



All information is for reference only. Prices, taxes and specifications subject to change and should be verified by all potential homebuyers. This is not an offer to sell but is intended for information only. The developer reserves the right to make modifications in materials, specifications, plans, pricing, various fees, designs, scheduling and delivery of homes without prior notice. All dimensions and square footages are approximate. Plan and dimensions may contain minor variations from floor to floor. CA DRE license no. 01877720.

5833 Kilbeggin Road

TIMNATH, CO 80547

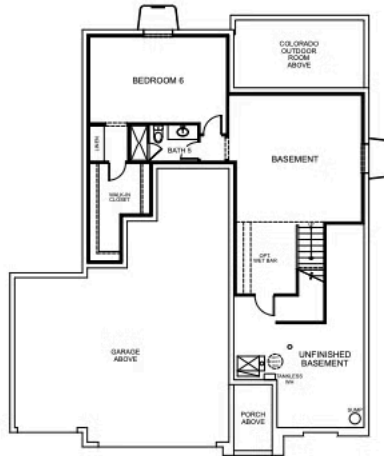
KITCHEL LAKE PLAN 4 FLOOR PLAN



PLAN 4 - OPTIONS

5 - 6 Bedrooms • 4 - 5 Baths • 4-Car Garage (Tandem)
Approx. 2,968 - 3,870 Finished Sq. Ft.


PRELIMINARY



BASEMENT OPTION 3

VIP-KITCHEL.COM



All information is for reference only. Prices, taxes and specifications subject to change and should be verified by all potential homebuyers. This is not an offer to sell but is intended for information only. The developer reserves the right to make modifications in materials, specifications, plans, pricing, various fees, designs, scheduling and delivery of homes without prior notice. All dimensions and square footages are approximate. Plan and dimensions may contain minor variations from floor to floor. CA DRE license no. 01877720. 

5833 Kilbeggin Road

TIMNATH, CO 80547

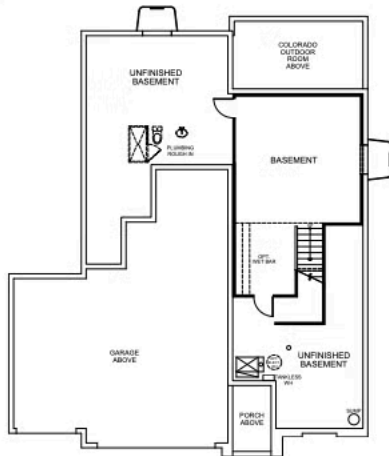
KITCHEL LAKE PLAN 4 FLOOR PLAN



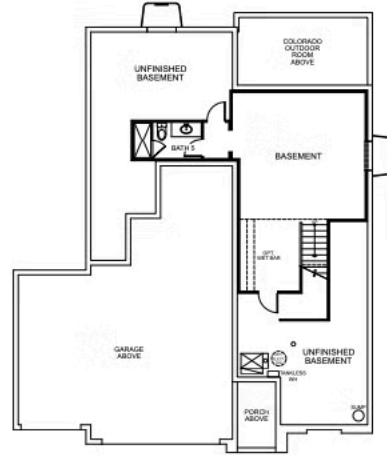
PLAN 4 - OPTIONS

5 - 6 Bedrooms • 4 - 5 Baths • 4-Car Garage (Tandem)
Approx. 2,968 - 3,870 Finished Sq. Ft.

PRELIMINARY



BASEMENT OPTION 1



BASEMENT OPTION 2

VIP-KITCHEL.COM



All information is for reference only. Prices, taxes and specifications subject to change and should be verified by all potential homebuyers. This is not an offer to sell but is intended for information only. The developer reserves the right to make modifications in materials, specifications, plans, pricing, various fees, designs, scheduling and delivery of homes without prior notice. All dimensions and square footages are approximate. Plan and dimensions may contain minor variations from floor to floor. CA DRE license no. 01877720.

TRUMARKHOMES

5833 Kilbeggin Road

TIMNATH, CO 80547

GET IN TOUCH
(970) 499-8222

KITCHEL LAKE PLAN 4 FLOOR PLAN



TRUMARK**HOMES**

5833 Kilbeggin Road

TIMNATH, CO 80547

GET IN TOUCH
(970) 499-8222

KITCHEL LAKE PLAN 4 FLOOR PLAN



TRUMARKHOMES

5833 Kilbeggin Road

TIMNATH, CO 80547

GET IN TOUCH
(970) 499-8222

KITCHEL LAKE PLAN 4 FLOOR PLAN

