

# 1414 Alyssa Drive

TIMNATH, CO 80547



PRICE  
**\$949,900**

PLAN  
Plan 4

LOCATION  
Kitchel Lake at Serratoga Falls

## FEATURES

-  5 Bedrooms
-  4.0 Bathrooms
-  2,968 Sq. Ft.
-  4 Car Garage

Homesite 4 at Kitchel Lake is a contemporary two-story home offering up to 3,870 Sq. Ft. of living space with five bedrooms and four baths. The home features an inviting porch with a secondary bedroom and ensuite bathroom off the front of the home. Beyond the entrance hall is the gourmet kitchen featuring a spacious walk-in pantry and a center preparation island that overlooks the light-filled, open-ceiling great room. The kitchen includes 42" deluxe white cabinetry, matte black fixtures, light quartz countertops with tile backsplash, stainless steel appliance package with a 5-burner gas cooktop, a convection oven, a built-in microwave, and a dishwasher. This room connects to the covered outdoor room with an optional staircase leading to the basement. The optional finished basement comes with an expansive secondary bedroom, a full bath, and a large walk-in closet. An optional wet bar on this level makes entertaining a breeze.

Upstairs you'll find a flex room connecting the three secondary bedrooms with ensuite baths. The primary suite offers a stunning, spa-like bathroom with dual sinks, a walk-in shower, and a freestanding tub. An expansive walk-in closet completes the primary suite. The home comes with light 5" plank engineered hardwood flooring in the entry and kitchen, luxurious carpet in bedrooms, deluxe primary shower tile with mosaic tile shower pan, spacious 9 or 10-foot ceilings, tankless water heater and AC, a 4-car tandem garage, and much more!



# 1414 Alyssa Drive

TIMNATH, CO 80547

## KITCHEL LAKE PLAN 4 FLOOR PLAN



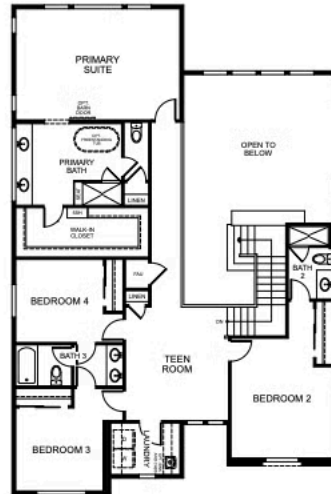
### PLAN 4

5 - 6 Bedrooms · 4 - 5 Baths · 4-Car Garage (Tandem)  
Approx. 2,968 - 3,870 Finished Sq. Ft.

PRELIMINARY



FIRST FLOOR



SECOND FLOOR

[VIP-KITCHEL.COM](http://VIP-KITCHEL.COM)



All information is for reference only. Prices, taxes and specifications subject to change and should be verified by all potential homebuyers. This is not an offer to sell but is intended for information only. The developer reserves the right to make modifications in materials, specifications, plans, pricing, various fees, designs, scheduling and delivery of homes without prior notice. All dimensions and square footages are approximate. Plan and dimensions may contain minor variations from floor to floor. CA DRE license no. 01877720.

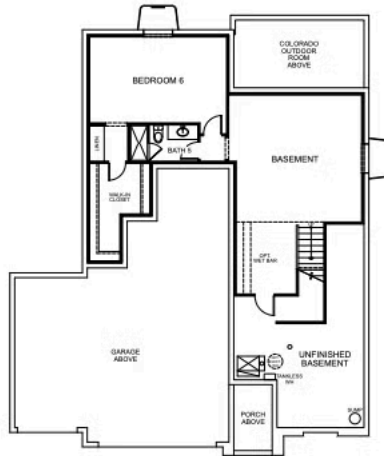
KITCHEL LAKE PLAN 4 FLOOR PLAN



PLAN 4 - OPTIONS

5 - 6 Bedrooms • 4 - 5 Baths • 4-Car Garage (Tandem)  
Approx. 2,968 - 3,870 Finished Sq. Ft.


PRELIMINARY



BASEMENT OPTION 3

[VIP-KITCHEL.COM](http://VIP-KITCHEL.COM)



All information is for reference only. Prices, taxes and specifications subject to change and should be verified by all potential homebuyers. This is not an offer to sell but is intended for information only. The developer reserves the right to make modifications in materials, specifications, plans, pricing, various fees, designs, scheduling and delivery of homes without prior notice. All dimensions and square footages are approximate. Plan and dimensions may contain minor variations from floor to floor. CA DRE license no. 01877720. 

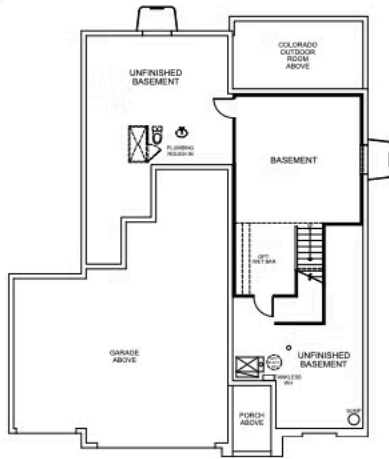
KITCHEL LAKE PLAN 4 FLOOR PLAN



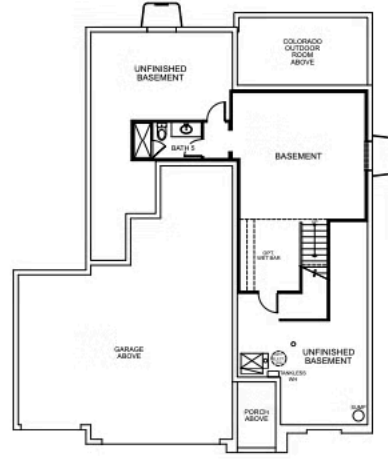
PLAN 4 - OPTIONS

5 - 6 Bedrooms • 4 - 5 Baths • 4-Car Garage (Tandem)  
Approx. 2,968 - 3,870 Finished Sq. Ft.

PRELIMINARY



BASEMENT OPTION 1



BASEMENT OPTION 2

[VIP-KITCHEL.COM](http://VIP-KITCHEL.COM)



All information is for reference only. Prices, taxes and specifications subject to change and should be verified by all potential homebuyers. This is not an offer to sell but is intended for information only. The developer reserves the right to make modifications in materials, specifications, plans, pricing, various fees, designs, scheduling and delivery of homes without prior notice. All dimensions and square footages are approximate. Plan and dimensions may contain minor variations from floor to floor. CA DRE license no. 01877720.

TRUMARK**HOMES**

# 1414 Alyssa Drive

TIMNATH, CO 80547

GET IN TOUCH  
(970) 499-8222

## KITCHEL LAKE PLAN 4 FLOOR PLAN



TRUMARK**HOMES**

# 1414 Alyssa Drive

TIMNATH, CO 80547

GET IN TOUCH  
(970) 499-8222

## KITCHEL LAKE PLAN 4 FLOOR PLAN



TRUMARK**HOMES**

# 1414 Alyssa Drive

TIMNATH, CO 80547

GET IN TOUCH  
**(970) 499-8222**

## KITCHEL LAKE PLAN 4 FLOOR PLAN

