

1404 Weller Court

TIMNATH, CO 80547



PRICE

\$1,083,712

PLAN

Plan 4

LOCATION

Kitchel Lake at Serratoga Falls

FEATURES

 6 Bedrooms

 5 Ba

 3,870 Sq. Ft.

 4 Car Garage

Homesite 1 of Block 4 at Kitchel Lake showcases a contemporary exterior and a 4-car tandem garage located at the front of the home. This expansive two-story design offers 3,870 square feet of living space and an open-concept layout perfect for both everyday living and entertaining. Just beyond the entry hall, the kitchen features 42" deluxe soft-close cabinetry, quartz countertops, a tile backsplash, and a full KitchenAid stainless steel appliance package including a 5-burner gas cooktop, convection oven, built-in microwave, dishwasher, and more. The kitchen flows seamlessly into the dining area and extends out to the covered outdoor room for easy indoor-outdoor living.

Upstairs, a spacious loft provides the perfect space for reading, watching TV, gaming, or hobbies. The secondary bedrooms are connected by an ensuite bathroom with dual sinks, while down the hall the primary suite offers a private retreat complete with a spa-inspired bathroom featuring a walk-in shower and an oversized walk-in closet. This home also includes a finished walkout basement with a wet bar, an additional bedroom and bathroom, and plenty of flexible space. The Diana Plus design finish package adds elevated touches throughout, including luxury vinyl plank flooring, plush carpet in the bedrooms, contemporary bath fixtures, a tankless water heater, air conditioning, and more. Situated on a large lot at the end of the cul-de-sac, this homesite backs to open space and offers beautiful scenic views.

1404 Weller Court

TIMNATH, CO 80547

KITCHEL LAKE

PLAN 4 - ELEVATIONS

5 – 6 Bedrooms • 4 – 5 Baths • 4-Car Garage (Tandem)
Approx. 2,968 – 3,870 Finished Sq. Ft.



Elevation 4A - Modern Farmhouse



Elevation 4B - Modern Prairie



Elevation 4C - Modern Mountain

970.450.5504 | KitcheLakeSales@trumarkco.com | 1432 Alyssa Drive, Timnath, CO 80547 | VIP-KITCHEL.COM

TRUMARKHOMES

This is not an offer to sell but is intended for information only. Trumark Homes reserves the right to make modifications to materials, specifications, brand names, appliances, fixtures, plans, pricing, various fees, designs, scheduling, and delivery of homes without prior notice. Square footages are approximate. Plans and dimensions may contain minor variations from floor to floor. Floor plans are for representational purposes only. Homes shown do not represent actual homesites. Rendering and photographs are artists' conceptions and do not reflect actual homesites. Models do not display racial preference. Updated 03/27/2025.

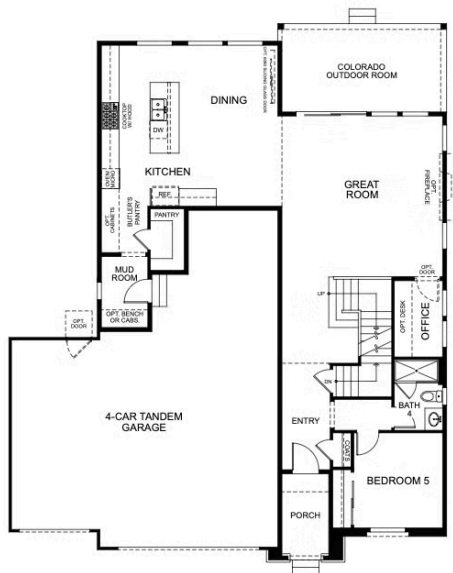
1404 Weller Court

TIMNATH, CO 80547

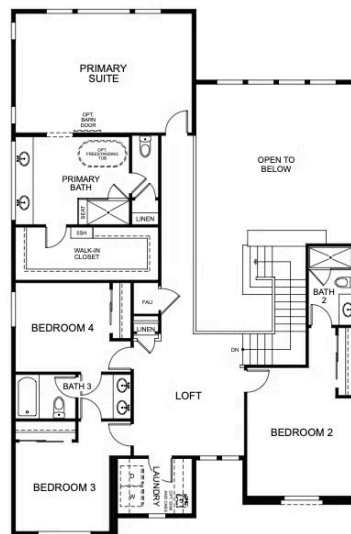


PLAN 4

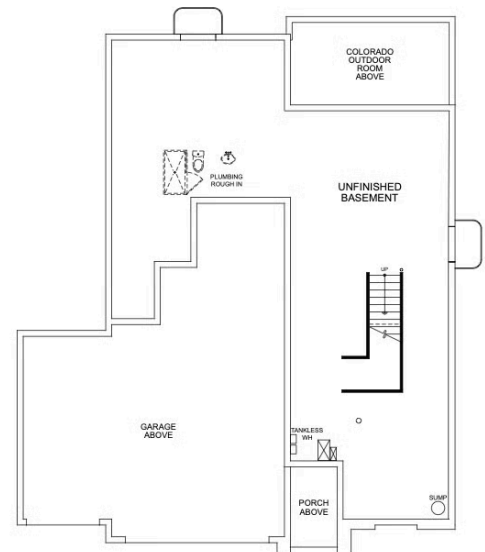
5 – 6 Bedrooms • 4 – 5 Baths • 4-Car Garage (Tandem)
Approx. 2,968 – 3,870 Finished Sq. Ft.



FIRST FLOOR



SECOND FLOOR



BASEMENT

970.450.5504 | KitchelLakeSales@trumarkco.com | 1432 Alyssa Drive, Timnath, CO 80547 | VIP-KITCHEL.COM

TRUMARKHOMES

This is not an offer to sell but is intended for information only. Trumark Homes reserves the right to make modifications to materials, specifications, brand names, appliances, fixtures, plans, pricing, various fees, designs, scheduling, and delivery of homes without prior notice. Square footages are approximate. Plans and dimensions may contain minor variations from floor to floor. Floor plans are for representational purposes only. Homes shown do not represent actual homesites. Rendering and photographs are artists' conceptions and do not reflect actual homesites. Models do not display racial preference. Updated 03/27/2025.

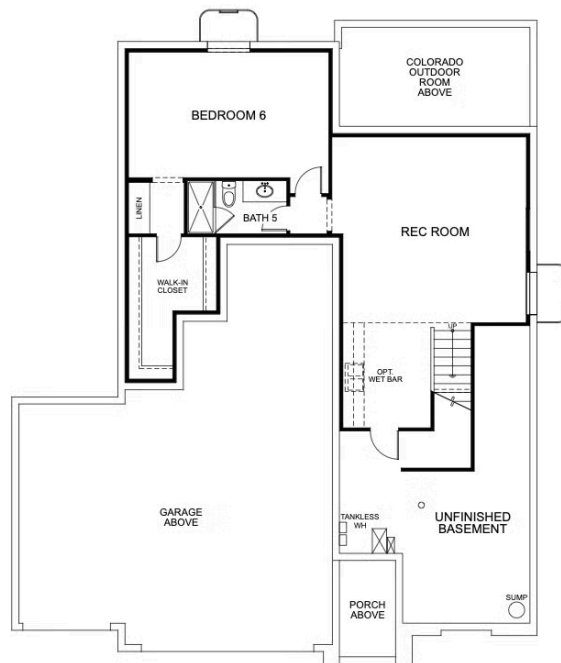
1404 Weller Court

TIMNATH, CO 80547



PLAN 4 - BASEMENT OPTIONS

5 – 6 Bedrooms • 4 – 5 Baths • 4-Car Garage (Tandem)
Approx. 2,968 – 3,870 Finished Sq. Ft.



OPTIONAL FINISHED BASEMENT

970.450.5504 | KitchelLakeSales@trumarkco.com | 1432 Alyssa Drive, Timnath, CO 80547 | VIP-KITCHEL.COM

TRUMARKHOMES

This is not an offer to sell but is intended for information only. Trumark Homes reserves the right to make modifications to materials, specifications, brand names, appliances, fixtures, plans, pricing, various fees, designs, scheduling, and delivery of homes without prior notice. Square footages are approximate. Plans and dimensions may contain minor variations from floor to floor. Floor plans are for representational purposes only. Homes shown do not represent actual homesites. Rendering and photographs are artists' conceptions and do not reflect actual homesites. Models do not display racial preference. Updated 03/27/2025. 🏡

TRUMARKHOMES

GET IN TOUCH
(970) 499-8222

1404 Weller Court

TIMNATH, CO 80547

KITCHEL LAKE PLAN 4 FLOOR PLAN



TRUMARKHOMES

1404 Weller Court

TIMNATH, CO 80547

GET IN TOUCH
(970) 499-8222

KITCHEL LAKE PLAN 4 FLOOR PLAN



TRUMARKHOMES

1404 Weller Court

TIMNATH, CO 80547

GET IN TOUCH
(970) 499-8222

KITCHEL LAKE PLAN 4 FLOOR PLAN



TRUMARKHOMES

1404 Weller Court

TIMNATH, CO 80547

GET IN TOUCH
(970) 499-8222

KITCHEL LAKE PLAN 4 FLOOR PLAN



TRUMARKHOMES

1404 Weller Court

TIMNATH, CO 80547

GET IN TOUCH
(970) 499-8222

KITCHEL LAKE PLAN 4 FLOOR PLAN



TRUMARKHOMES

1404 Weller Court

TIMNATH, CO 80547

GET IN TOUCH
(970) 499-8222

KITCHEL LAKE PLAN 4 FLOOR PLAN

