

1380 Weller Ct

TIMNATH, CO 80547



PRICE

\$991,341

PLAN

Plan 4

LOCATION

Kitchel Lake at Serratoga Falls

FEATURES

 5 Bedrooms

 4 Ba

 2,968 Sq. Ft.

 4 Car Garage

Homesite 5 of Block 4 at Kitchel Lake features a 4-car tandem garage off the front of the home with a contemporary elevation style. This expansive two-story plan offers 2,968 Sq. Ft. of living space. Beyond the entry hall is the open kitchen featuring 42" deluxe cabinetry with soft close features, quartz countertops with tile backsplash, stainless steel appliance package with a 5-burner gas cooktop, a convection oven, a built-in microwave, and a dishwasher. The kitchen conveniently connects to the dining room and the covered outdoor room.

Upstairs, you'll find a welcoming loft for reading, tv watching, gaming or hobbies. The secondary bedrooms are connected by an ensuite bathroom with dual sinks. Down the hall, the primary suite offers a luxurious, spa-like bathroom with a walk-in shower and an expansive walk-in closet.

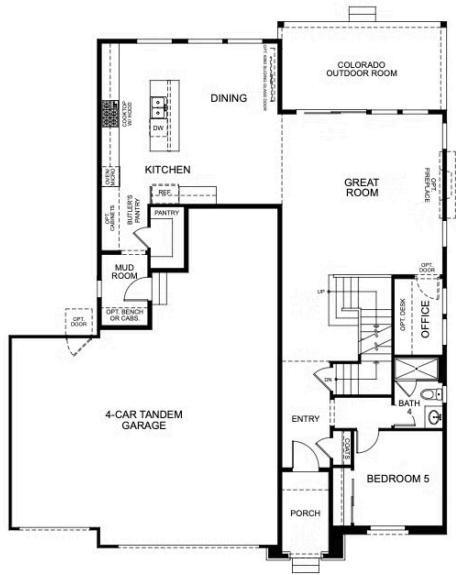
This home features the Christy Plus design finish package with extensive luxury vinyl plank flooring, luxurious carpet in bedrooms, contemporary bath fixtures, a tankless water heater, air conditioning, and much more!

Key Features include 2,968 finished sq. ft, 5 bedrooms, 4 bathrooms, unfinished walkout basement, open kitchen with white cabinets and tiled backsplash, Quartz countertops throughout, GE stainless steel appliances, fireplace at great room with floor to ceiling tile, main floor bedroom with bath, spa-like primary bath with walk-in shower, upstairs loft and three secondary bedrooms , 4-Car tandem garage, cul-de-sac lot backing to open space.



PLAN 4

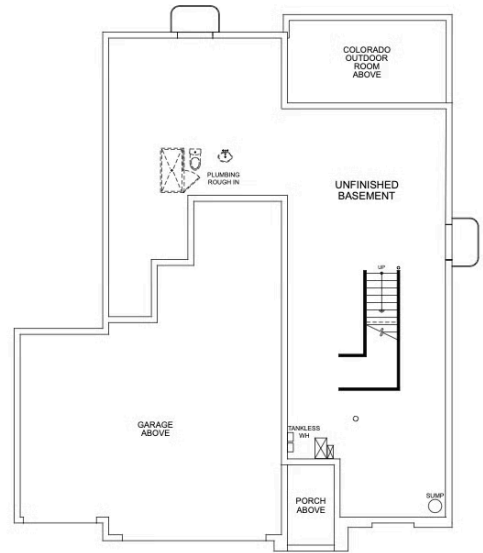
5 – 6 Bedrooms · 4 – 5 Baths · 4-Car Garage (Tandem)
Approx. 2,968 – 3,870 Finished Sq. Ft.



FIRST FLOOR



SECOND FLOOR



BASEMENT

970.450.5504 | KitcheLakeSales@trumarkco.com | 1432 Alyssa Drive, Timnath, CO 80547 | VIP-KITCHEL.COM

1380 Weller Ct

TIMNATH, CO 80547

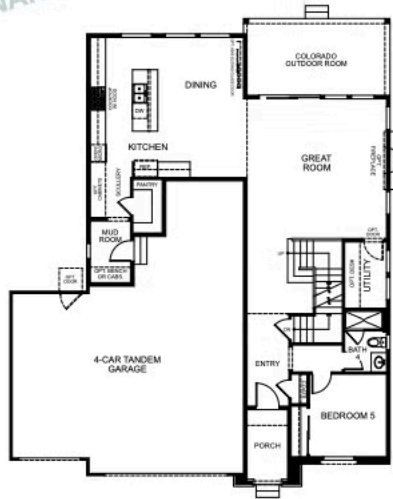
KITCHEL LAKE PLAN 4 FLOOR PLAN



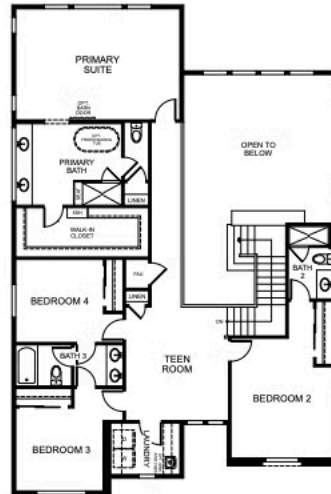
PLAN 4

5 - 6 Bedrooms · 4 - 5 Baths · 4-Car Garage (Tandem)
Approx. 2,968 - 3,870 Finished Sq. Ft.

PRELIMINARY



FIRST FLOOR



SECOND FLOOR

VIP-KITCHEL.COM



All information is for reference only. Prices, taxes and specifications subject to change and should be verified by all potential homebuyers. This is not an offer to sell but is intended for information only. The developer reserves the right to make modifications in materials, specifications, plans, pricing, various fees, designs, scheduling and delivery of homes without prior notice. All dimensions and square footages are approximate. Plan and dimensions may contain minor variations from floor to floor. CA DRE license no. 01877720.

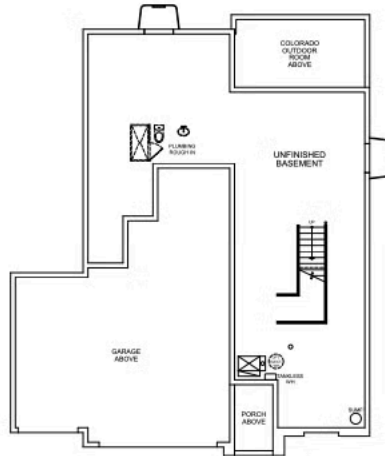
KITCHEL LAKE PLAN 4 FLOOR PLAN



PLAN 4

5 - 6 Bedrooms • 4 - 5 Baths • 4-Car Garage (Tandem)
Approx. 2,968 - 3,870 Finished Sq. Ft.

PRELIMINARY



BASEMENT

VIP-KITCHEL.COM



All information is for reference only. Prices, taxes and specifications subject to change and should be verified by all potential homebuyers. This is not an offer to sell but is intended for information only. The developer reserves the right to make modifications in materials, specifications, plans, pricing, various fees, designs, scheduling and delivery of homes without prior notice. All dimensions and square footages are approximate. Plan and dimensions may contain minor variations from floor to floor. CA DRE license no. 01877720. (i)