

1340 Alyssa Drive

TIMNATH, CO 80547



PRICE
\$924,900

PLAN
Plan 4

LOCATION
Kitchel Lake at Serratoga Falls

FEATURES

-  5 Bedrooms
-  4.0 Bathrooms
-  2,968 Sq. Ft.
-  4 Car Garage

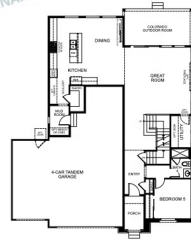
Homesite 8, a plan 4 at Kitchel Lake, is a contemporary two-story home offering up to 2,768 Sq. Ft. of living space with five bedrooms and four baths. The home features an inviting porch with a secondary bedroom and ensuite bathroom off the front of the home. Beyond the entrance hall is the gourmet kitchen featuring a spacious walk-in pantry and a center preparation island that overlooks the light-filled, open-ceiling great room. The kitchen includes 42" deluxe Dusk Satin cabinetry, light quartz countertops with tile backsplash, stainless steel appliance package with a 5-burner gas cooktop, a convection oven, a built-in microwave, and a dishwasher. This room connects to the covered outdoor room making entertaining a breeze.

Upstairs you'll find a flex room connecting the three secondary bedrooms with ensuite baths. The primary suite offers a stunning, spa-like bathroom with dual sinks, a walk-in shower, and a freestanding tub. An expansive walk-in closet completes the primary suite. The home comes with extensive plank laminate flooring in the entry and kitchen, luxurious carpet in bedrooms, deluxe primary shower tile with mosaic tile shower pan, spacious 9 or 10-foot ceilings, tankless water heater and AC, a 4-car tandem garage, and much more! This home also comes with fully complete landscaping in the front and back.

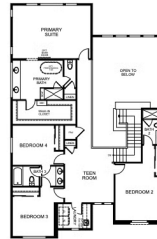
KITCHEL LAKE PLAN 4 FLOOR PLAN

KITCHEL LAKE **PLAN 4**
5 - 6 Bedrooms - 4 - 5 Baths - 4-Car Garage (Tandem)
Approx. 2,968 - 3,870 Finished Sq. Ft.

PRELIMINARY



FIRST FLOOR



SECOND FLOOR

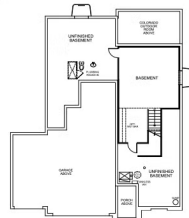
TRUMARK HOMES All information is for reference only. Prices, fees and specifications subject to change and should be verified by all potential homebuyers. This is not an offer to sell but is intended for information only. The developer reserves the right to make modifications in materials, specifications, plans, pricing, schedule, design, including and delivery of homes without prior notice. All dimensions and square footage are approximate. Plan and dimensions may contain minor variations from those in floor. C-1234567890. 08/27/22. ©

VIP-KITCHEL.COM

KITCHEL LAKE PLAN 4 FLOOR PLAN

KITCHEL LAKE **PLAN 4 - OPTIONS**
 5 - 6 Bedrooms - 4 - 5 Baths - 4-Car Garage (Tandem)
 Approx. 2,968 - 3,870 Finished Sq. Ft.

PRELIMINARY



BASEMENT OPTION 1



BASEMENT OPTION 2

TRUMARK HOMES All information is for reference only. Plans, fees and specifications subject to change and should be verified by all potential homebuyers. This is not an offer to sell but is intended for information only. The developer reserves the right to make modifications in materials, specifications, plans, pricing, volume, fees, design, scheduling and delivery of homes without prior notice. All dimensions and square footages are approximate. Plan and prices may vary from those shown here. © 2017 TruMark Homes, LLC. All rights reserved. 08/17/22. 01

VIP-KITCHEL.COM

TRUMARKHOMES

1340 Alyssa Drive

TIMNATH, CO 80547

GET IN TOUCH
(970) 499-8222

KITCHEL LAKE PLAN 4 FLOOR PLAN



TRUMARKHOMES

1340 Alyssa Drive

TIMNATH, CO 80547

GET IN TOUCH
(970) 499-8222

KITCHEL LAKE PLAN 4 FLOOR PLAN



TRUMARKHOMES

1340 Alyssa Drive

TIMNATH, CO 80547

GET IN TOUCH
(970) 499-8222

KITCHEL LAKE PLAN 4 FLOOR PLAN

