

Plan 4

KITCHEL LAKE AT SERRATOGA FALLS



PRICE
\$829,900

FEATURES

-  5 Bedrooms
-  4 Bathrooms
-  2,968 - 3,870 Sq. Ft.
-  4 Car Garage

Plan 4 at Kitchel Lake is a contemporary two-story home offering up to 3,870 Sq. Ft. of living space with five bedrooms and four baths. The home features an inviting porch with a secondary bedroom and ensuite bathroom off the front of the home. Beyond the entrance hall is the gourmet kitchen featuring a spacious walk-in pantry and a center preparation island that overlooks the light-filled, open-ceiling great room. The kitchen includes 42" deluxe cabinetry, quartz countertops with tile backsplash, stainless steel appliance package with a 5-burner gas cooktop, a convection oven, a built-in microwave, and a dishwasher. This room connects to the covered outdoor room with an optional staircase leading to the basement. The optional finished basement comes with an expansive secondary bedroom, a full bath, and a large walk-in closet. An optional wet bar on this level makes entertaining a breeze.

Upstairs you'll find a flex room connecting the three secondary bedrooms with ensuite baths. The primary suite offers a stunning, spa-like bathroom with dual sinks, a walk-in shower, and an optional freestanding tub. An expansive walk-in closet completes the primary suite. The home comes with extensive plank laminate flooring in the entry and kitchen, luxurious carpet in bedrooms, deluxe primary shower tile with tile shower pan, spacious 9 or 10-foot ceilings, tankless water heater and AC, a 4-car tandem garage, and much more!

Plan 4

KITCHEL LAKE AT SERRATOGA FALLS



PLAN 4 - ELEVATIONS

5 – 6 Bedrooms • 4 – 5 Baths • 4-Car Garage (Tandem)
Approx. 2,968 – 3,870 Finished Sq. Ft.



Elevation 4A - Modern Farmhouse



Elevation 4B - Modern Prairie



Elevation 4C - Modern Mountain

970.450.5504 | KitchelLakeSales@trumarkco.com | 1432 Alyssa Drive, Timnath, CO 80547 | VIP-KITCHEL.COM

TRUMARKHOMES

This is not an offer to sell but is intended for information only. Trumark Homes reserves the right to make modifications to materials, specifications, brand names, appliances, fixtures, plans, pricing, various fees, designs, scheduling, and delivery of homes without prior notice. Square footages are approximate. Plans and dimensions may contain minor variations from floor to floor. Floor plans are for representational purposes only. Homes shown do not represent actual homesites. Rendering and photographs are artists' conceptions and do not reflect actual homesites. Models do not display racial preference. Updated 03/27/2025.

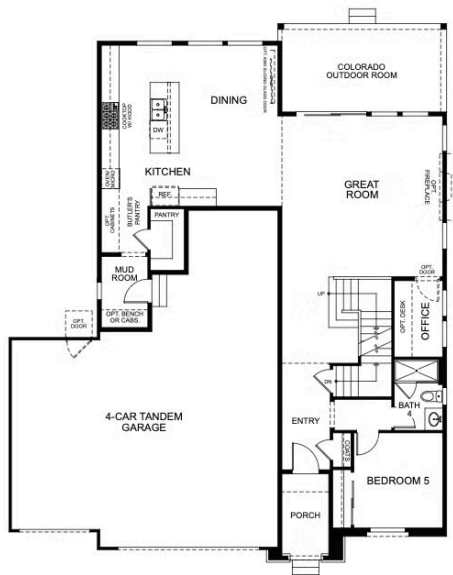
Plan 4

KITCHEL LAKE AT SERRATOGA FALLS

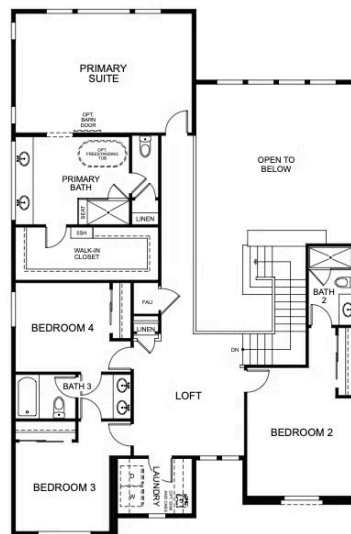


PLAN 4

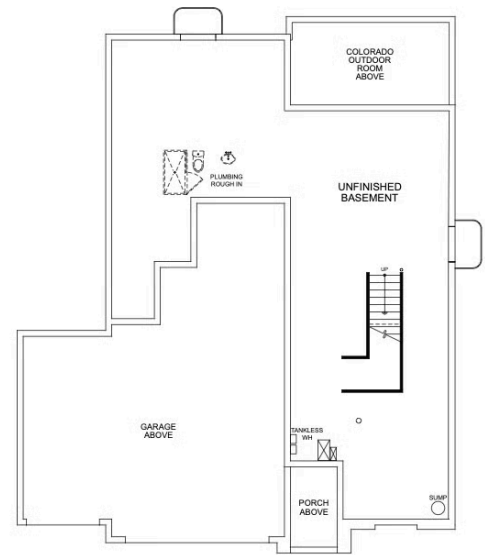
5 – 6 Bedrooms • 4 – 5 Baths • 4-Car Garage (Tandem)
Approx. 2,968 – 3,870 Finished Sq. Ft.



FIRST FLOOR



SECOND FLOOR



BASEMENT


970.450.5504 | KitchelLakeSales@trumarkco.com | 1432 Alyssa Drive, Timnath, CO 80547 | VIP-KITCHEL.COM

TRUMARKHOMES

This is not an offer to sell but is intended for information only. Trumark Homes reserves the right to make modifications to materials, specifications, brand names, appliances, fixtures, plans, pricing, various fees, designs, scheduling, and delivery of homes without prior notice. Square footages are approximate. Plans and dimensions may contain minor variations from floor to floor. Floor plans are for representational purposes only. Homes shown do not represent actual homesites. Rendering and photographs are artists' conceptions and do not reflect actual homesites. Models do not display racial preference. Updated 03/27/2025.

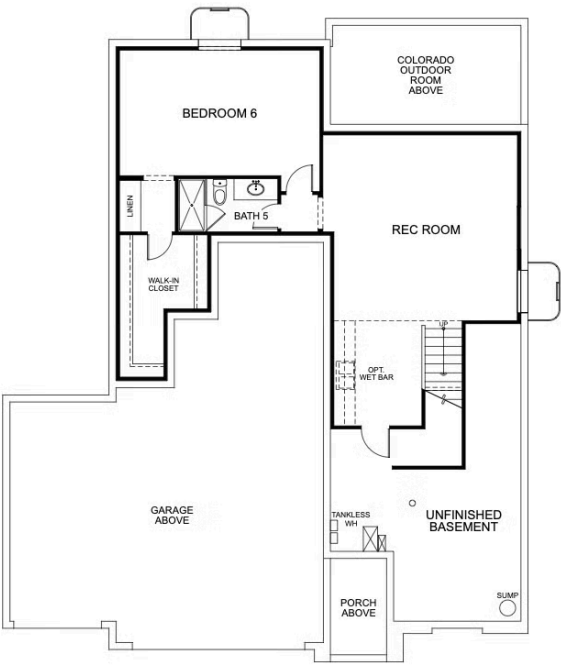
Plan 4

KITCHEL LAKE AT SERRATOGA FALLS



PLAN 4 - BASEMENT OPTIONS

5 – 6 Bedrooms • 4 – 5 Baths • 4-Car Garage (Tandem)
Approx. 2,968 – 3,870 Finished Sq. Ft.



OPTIONAL FINISHED BASEMENT

970.450.5504 | KitchelLakeSales@trumarkco.com | 1432 Alyssa Drive, Timnath, CO 80547 | VIP-KITCHEL.COM

TRUMARKHOMES

This is not an offer to sell but is intended for information only. Trumark Homes reserves the right to make modifications to materials, specifications, brand names, appliances, fixtures, plans, pricing, various fees, designs, scheduling, and delivery of homes without prior notice. Square footages are approximate. Plans and dimensions may contain minor variations from floor to floor. Floor plans are for representational purposes only. Homes shown do not represent actual homesites. Rendering and photographs are artists' conceptions and do not reflect actual homesites. Models do not display racial preference. Updated 03/27/2025.