

5874 Kilbeggin Road

TIMNATH, CO 80547



PRICE
\$899,900

PLAN
Plan 3

LOCATION
Kitchel Lake at Serratoga Falls

FEATURES
 4 Bedrooms
 3 Ba
 2,768 Sq. Ft.
 4 Car Garage

Homesite 2* at Kitchel Lake is a modern two-story home offering 2,768 finished square feet of living space. This thoughtfully designed floorplan includes a gourmet kitchen with walk-in pantry, large great room, covered outdoor room, bonus room and unfinished basement. This is where modern living and lifestyle come together with a professionally designed finish package including LVP wood-like flooring, a tankless water heater, air conditioning and much more!!

Key features include Backs to green belt, Bonus Room, Main floor bedroom with bath, Unfinished basement, Covered patio, Gourmet kitchen with slate cabinets, Quartz countertops throughout, Spa-like primary bath, and Oversized 4-Car tandem garage. ***Home is active with first right of refusal. See Community Sales Manager for details.

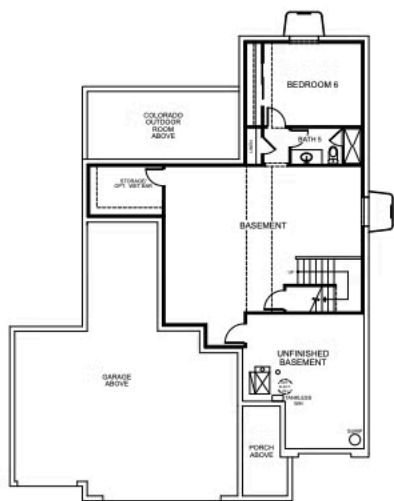
KITCHEL LAKE PLAN 3 FLOOR PLAN



PLAN 3 - OPTIONS


4 - 6 Bedrooms • 3 - 4 Baths • 4-Car Garage (Tandem)
2,768 - 3,733 Finished Sq. Ft.


PRELIMINARY



BASEMENT OPTION 3

VIP-KITCHEL.COM



All information is for reference only. Prices, taxes and specifications subject to change and should be verified by all potential homebuyers. This is not an offer to sell but is intended for information only. The developer reserves the right to make modifications in materials, specifications, plans, pricing, various fees, designs, scheduling and delivery of homes without prior notice. All dimensions and square footages are approximate. Plan and dimensions may contain minor variations from floor to floor. CA DRE license no. 01877720. 

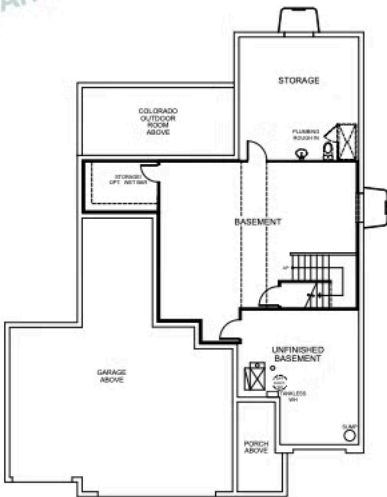
KITCHEL LAKE PLAN 3 FLOOR PLAN



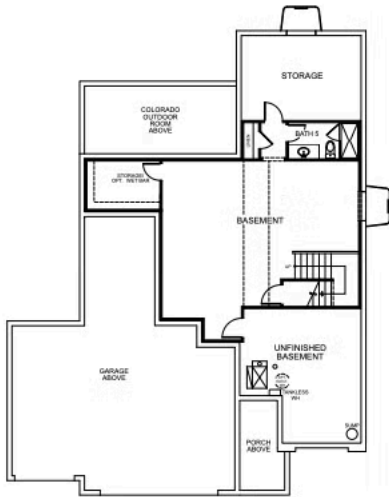
PLAN 3 - OPTIONS

4 - 6 Bedrooms • 3 - 4 Baths • 4-Car Garage (Tandem)
2,768 - 3,733 Finished Sq. Ft.

PRELIMINARY




BASEMENT OPTION 1



BASEMENT OPTION 2



All information is for reference only. Prices, taxes and specifications subject to change and should be verified by all potential homebuyers. This is not an offer to sell but is intended for information only. The developer reserves the right to make modifications in materials, specifications, plans, pricing, various fees, designs, scheduling and delivery of homes without prior notice. All dimensions and square footages are approximate. Plan and dimensions may contain minor variations from floor to floor. CA DRE license no. 01877720. 

VIP-KITCHEL.COM

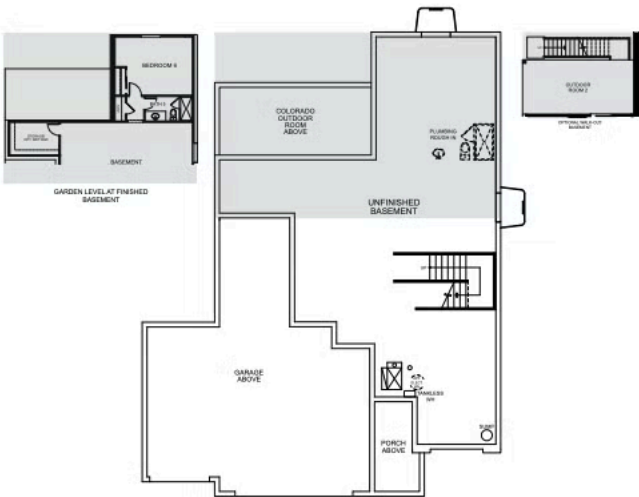
KITCHEL LAKE PLAN 3 FLOOR PLAN



PLAN 3 - OPTIONS


4 - 6 Bedrooms • 3 - 4 Baths • 4-Car Garage (Tandem)
2,768 - 3,733 Finished Sq. Ft.

PRELIMINARY



BASEMENT



All information is for reference only. Prices, taxes and specifications subject to change and should be verified by all potential homebuyers. This is not an offer to sell but is intended for information only. The developer reserves the right to make modifications in materials, specifications, plans, pricing, various fees, designs, scheduling and delivery of homes without prior notice. All dimensions and square footages are approximate. Plan and dimensions may contain minor variations from floor to floor. CA DRE license no. 01877720. 

VIP-KITCHEL.COM

TRUMARK**HOMES**

5874 Kilbeggin Road

TIMNATH, CO 80547

GET IN TOUCH
(970) 499-8222

KITCHEL LAKE PLAN 3 FLOOR PLAN



TRUMARKHOMES

5874 Kilbeggin Road

TIMNATH, CO 80547

GET IN TOUCH
(970) 499-8222

KITCHEL LAKE PLAN 3 FLOOR PLAN



TRUMARK**HOMES**

5874 Kilbeggin Road

TIMNATH, CO 80547

GET IN TOUCH
(970) 499-8222

KITCHEL LAKE PLAN 3 FLOOR PLAN



TRUMARKHOMES

5874 Kilbeggin Road

TIMNATH, CO 80547

GET IN TOUCH
(970) 499-8222



TRUMARK**HOMES**

5874 Kilbeggin Road

TIMNATH, CO 80547

GET IN TOUCH
(970) 499-8222



TRUMARK**HOMES**

5874 Kilbeggin Road

TIMNATH, CO 80547

GET IN TOUCH
(970) 499-8222

