

# 5850 Kilbeggin Road

TIMNATH, CO 80547



## PRICE

**\$874,900**

## PLAN

Plan 3

## LOCATION

Kitchel Lake at Serratoga Falls

## FEATURES

 4 Bedrooms

 3 Ba

 2,768 Sq. Ft.

 4 Car Garage

Hello Sunshine, Hello Home! First Year 2.875% (5.888% APR)\* [Learn More -->](#)

Homesite 6 at Kitchel Lake features a south-facing driveway and a spacious 4-car tandem garage located at the front of the home. The expansive two-story plan offers 2,768 finished Sq. Ft. of living space with four bedrooms and three baths. Beyond the entrance hall is the gourmet kitchen featuring a spacious walk-in pantry and a center preparation island. This island overlooks the open-ceiling dining room and the great room, complete with a modern gas fireplace. The kitchen includes 42" deluxe cabinetry, quartz countertops with tile backsplash, stainless steel appliance package with a 5-burner gas cooktop, a convection oven, a built-in microwave, and a dishwasher. This room conveniently connects to the office and the covered outdoor room.

The primary suite offers a luxurious, spa-like bathroom with a walk-in shower and freestanding tub. An expansive walk-in closet completes the primary suite. The home comes with extensive plank laminate flooring in the entry and kitchen, luxurious carpet in bedrooms, Diana Plus Package, brushed nickel, deluxe primary shower tile with mosaic tile shower pan, spacious 9 or 10-foot ceilings, insulated steel garage door, tankless water heater and AC, and much more!



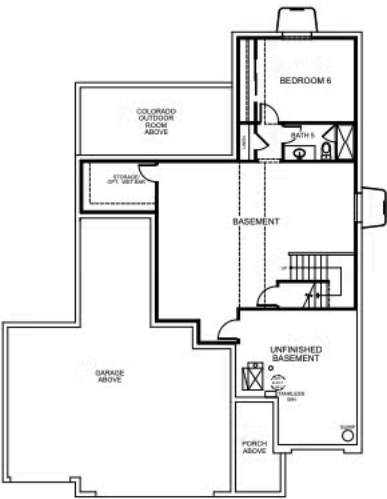
KITCHEL LAKE PLAN 3 FLOOR PLAN



**PLAN 3 - OPTIONS**

4 - 6 Bedrooms • 3 - 4 Baths • 4-Car Garage (Tandem)  
2,768 - 3,733 Finished Sq. Ft.


PRELIMINARY



BASEMENT OPTION 3

[VIP-KITCHEL.COM](http://VIP-KITCHEL.COM)



All information is for reference only. Prices, taxes and specifications subject to change and should be verified by all potential homebuyers. This is not an offer to sell but is intended for information only. The developer reserves the right to make modifications in materials, specifications, plans, pricing, various fees, designs, scheduling and delivery of homes without prior notice. All dimensions and square footages are approximate. Plan and dimensions may contain minor variations from floor to floor. CA DRE license no. 01877720. 

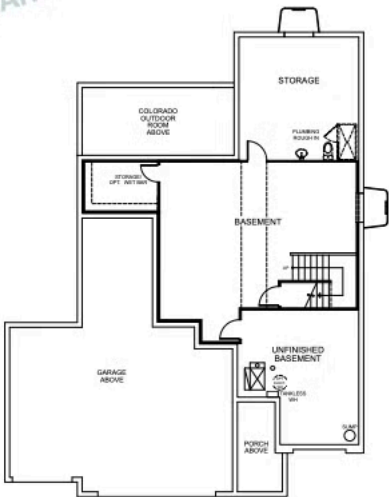
KITCHEL LAKE PLAN 3 FLOOR PLAN



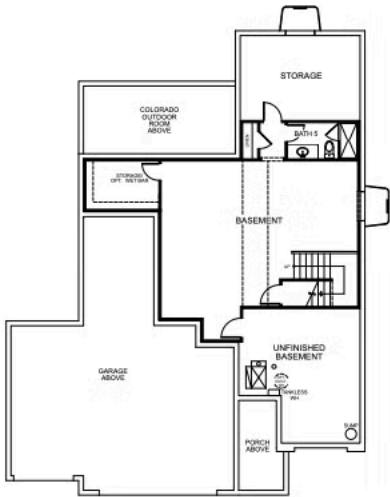
**PLAN 3 - OPTIONS**

4 - 6 Bedrooms • 3 - 4 Baths • 4-Car Garage (Tandem)  
2,768 - 3,733 Finished Sq. Ft.


PRELIMINARY




BASEMENT OPTION 1



BASEMENT OPTION 2



[VIP-KITCHEL.COM](http://VIP-KITCHEL.COM)

All information is for reference only. Prices, taxes and specifications subject to change and should be verified by all potential homebuyers. This is not an offer to sell but is intended for information only. The developer reserves the right to make modifications in materials, specifications, plans, pricing, various fees, designs, scheduling and delivery of homes without prior notice. All dimensions and square footages are approximate. Plan and dimensions may contain minor variations from floor to floor. CA DRE license no. 01877720. 

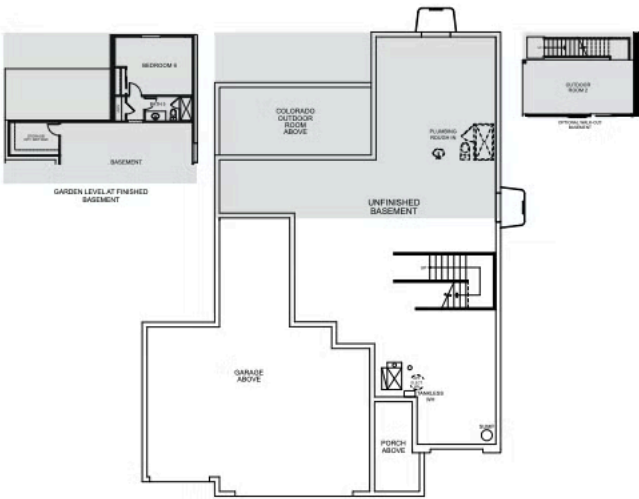
KITCHEL LAKE PLAN 3 FLOOR PLAN



**PLAN 3 - OPTIONS**


4 - 6 Bedrooms • 3 - 4 Baths • 4-Car Garage (Tandem)  
2,768 - 3,733 Finished Sq. Ft.

PRELIMINARY



BASEMENT



All information is for reference only. Prices, taxes and specifications subject to change and should be verified by all potential homebuyers. This is not an offer to sell but is intended for information only. The developer reserves the right to make modifications in materials, specifications, plans, pricing, various fees, designs, scheduling and delivery of homes without prior notice. All dimensions and square footages are approximate. Plan and dimensions may contain minor variations from floor to floor. CA DRE license no. 01877720. 

[VIP-KITCHEL.COM](http://VIP-KITCHEL.COM)

TRUMARK**HOMES**

**5850 Kilbeggin Road**

TIMNATH, CO 80547

GET IN TOUCH  
**(970) 499-8222**

KITCHEL LAKE PLAN 3 FLOOR PLAN



TRUMARK**HOMES**

**5850 Kilbeggin Road**

TIMNATH, CO 80547

GET IN TOUCH  
**(970) 499-8222**

KITCHEL LAKE PLAN 3 FLOOR PLAN



TRUMARK**HOMES**

**5850 Kilbeggin Road**

TIMNATH, CO 80547

GET IN TOUCH  
**(970) 499-8222**

KITCHEL LAKE PLAN 3 FLOOR PLAN

