

# Plan 3

KITCHEL LAKE AT SERRATOGA FALLS



PRICE  
**\$809,900**

## FEATURES

-  4 Bedrooms
-  3 Bathrooms
-  2,768 - 3,733 Sq. Ft.
-  4 Car Garage

Plan 3 at Kitchel Lake features a 4-car tandem garage off the front of the home. The expansive two-story plan offers up to 3,733 Sq. Ft. of living space with four bedrooms and three baths. Beyond the entrance hall is the gourmet kitchen featuring a spacious walk-in pantry and a center preparation island. This island overlooks the open-ceiling dining room and the great room, complete with an optional modern gas fireplace. The kitchen includes 42" deluxe cabinetry, quartz countertops with tile backsplash, stainless steel appliance package with a 5-burner gas cooktop, a convection oven, a built-in microwave, and a dishwasher. This room conveniently connects to the office and the covered outdoor room with an optional staircase leading to the basement. The optional finished basement includes an additional secondary bedroom and bath with the option for a spacious wet bar for easy entertaining.

Upstairs, you'll find a bonus room with the option for a bedroom and full bathroom and two secondary bedrooms connected by an ensuite bathroom with dual sinks. The primary suite offers a luxurious, spa-like bathroom with a walk-in shower and optional freestanding tub. An expansive walk-in closet completes the primary suite. The home comes with extensive plank laminate flooring in the entry and kitchen, luxurious carpet in bedrooms, deluxe primary shower tile with tile shower pan, spacious 9 or 10-foot ceilings, insulated steel garage door, tankless water heater and AC, and much more!



# Plan 3

KITCHEL LAKE AT SERRATOGA FALLS



## PLAN 3 - ELEVATIONS

4 – 6 Bedrooms • 3 – 4 Baths • 4-Car Garage (Tandem)  
2,768 – 3,733 Finished Sq. Ft.



Elevation 3A - Modern Farmhouse



Elevation 3B - Modern Prairie



Elevation 3C - Modern Mountain

970.450.5504 | KitchelLakeSales@trumarkco.com | 1432 Alyssa Drive, Timnath, CO 80547 | VIP-KITCHEL.COM

TRUMARKHOMES

This is not an offer to sell but is intended for information only. Trumark Homes reserves the right to make modifications to materials, specifications, brand names, appliances, fixtures, plans, pricing, various fees, designs, scheduling, and delivery of homes without prior notice. Square footages are approximate. Plans and dimensions may contain minor variations from floor to floor. Floor plans are for representational purposes only. Homes shown do not represent actual homesites. Rendering and photographs are artists' conceptions and do not reflect actual homesites. Models do not display racial preference. Updated 03/27/2025. 🏠

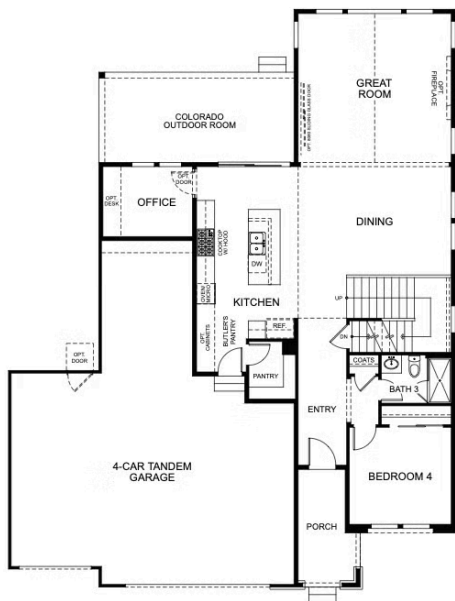
# Plan 3

KITCHEL LAKE AT SERRATOGA FALLS



## PLAN 3

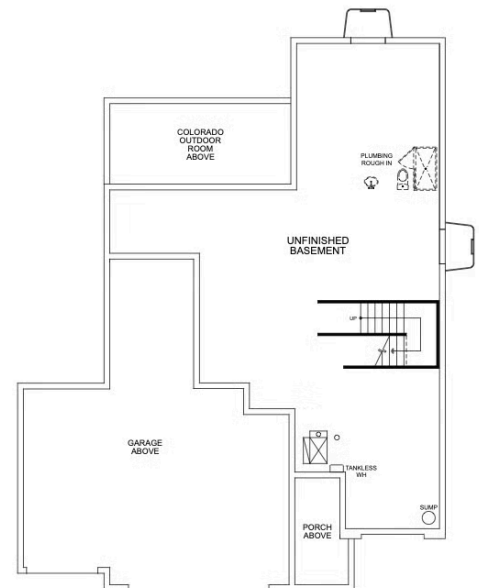
4 – 6 Bedrooms • 3 – 4 Baths • 4-Car Garage (Tandem)  
2,768 – 3,733 Finished Sq. Ft.



FIRST FLOOR



SECOND FLOOR



BASEMENT

970.450.5504 | KitchelLakeSales@trumarkco.com | 1432 Alyssa Drive, Timnath, CO 80547 | VIP-KITCHEL.COM

TRUMARKHOMES

This is not an offer to sell but is intended for information only. Trumark Homes reserves the right to make modifications to materials, specifications, brand names, appliances, fixtures, plans, pricing, various fees, designs, scheduling, and delivery of homes without prior notice. Square footages are approximate. Plans and dimensions may contain minor variations from floor to floor. Floor plans are for representational purposes only. Homes shown do not represent actual homesites. Rendering and photographs are artists' conceptions and do not reflect actual homesites. Models do not display racial preference. Updated 03/27/2025.

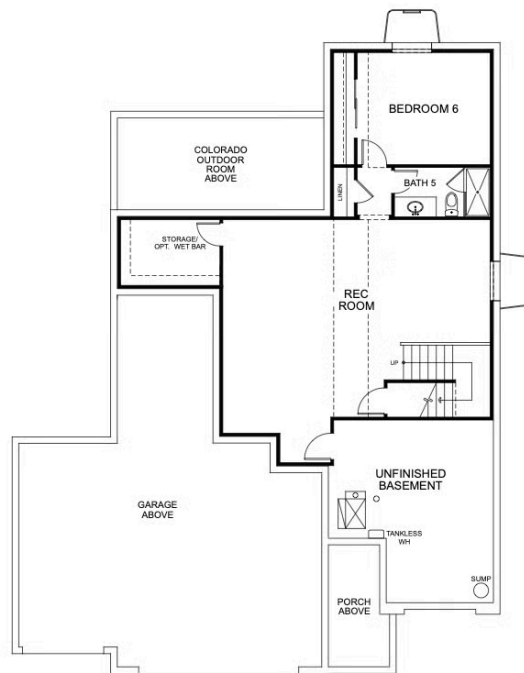
# Plan 3

KITCHEL LAKE AT SERRATOGA FALLS



## PLAN 3 - BASEMENT OPTIONS

4 – 6 Bedrooms • 3 – 4 Baths • 4-Car Garage (Tandem)  
2,768 – 3,733 Finished Sq. Ft.



OPTIONAL FINISHED BASEMENT

970.450.5504 | KitchelLakeSales@trumarkco.com | 1432 Alyssa Drive, Timnath, CO 80547 | VIP-KITCHEL.COM

TRUMARKHOMES

This is not an offer to sell but is intended for information only. Trumark Homes reserves the right to make modifications to materials, specifications, brand names, appliances, fixtures, plans, pricing, various fees, designs, scheduling, and delivery of homes without prior notice. Square footages are approximate. Plans and dimensions may contain minor variations from floor to floor. Floor plans are for representational purposes only. Homes shown do not represent actual homesites. Rendering and photographs are artists' conceptions and do not reflect actual homesites. Models do not display racial preference. Updated 03/27/2025.