

5844 Kilbeggin Road

TIMNATH, CO 80547

**PRICE**
\$799,900**PLAN**
Plan 2**LOCATION**
Kitchel Lake at Serratoga Falls**FEATURES**
 3 Bedrooms
 2 Ba, 1 Half Ba
 2,228 Sq. Ft.
 3 Car Garage

Hello Sunshine, Hello Home! First Year 2.875% (5.888% APR)* [Learn More -->](#)

Homesite 7, at Kitchel Lake is a contemporary single-story home offering 2,228 finished Sq. Ft. of living space with three bedrooms and two and a half baths. The home features an inviting porch with secondary bedrooms and an office just through the entrance hall. Beyond is the gourmet kitchen featuring a spacious walk-in pantry and a center preparation island which overlooks the dining and great room, complete with gas fireplace. The kitchen includes 42" dark cabinetry, quartz countertops with tile backsplash, nickel finished, stainless steel appliance package with a 5-burner gas cooktop, a convection oven, a built-in microwave, and a dishwasher.

The great room opens up to the covered outdoor room. The primary suite, located just off the great room offers a stunning, spa-like bathroom with a walk-in shower and a freestanding tub. An expansive walk-in closet completes the primary suite.

This home features the Jocelyn Plus design package and offers extensive luxury vinyl plank flooring in the entry, kitchen and great room, laundry room with base cabinets and sink, luxurious carpet in the bedrooms, a deluxe primary shower with mosaic tile accents, and spacious 10-foot ceilings. Additional highlights include an insulated, oversized steel 3-car garage door, a tankless water heater, air conditioning, and more. Plus, it's situated on a desirable corner lot and fully landscaped!

5844 Kilbeggan Road

TIMNATH, CO 80547



PLAN 2 - ELEVATIONS

3 – 4 Bedrooms • 2.5 – 3.5 Baths • 3-Car Garage
Approx. 2,228 – 3,184 Finished Sq. Ft.



Elevation 2A - Modern Farmhouse



Elevation 2B - Modern Prairie



Elevation 2C - Modern Mountain

970.450.5504 | KitchelLakeSales@trumarkco.com | 1432 Alyssa Drive, Timnath, CO 80547 | VIP-KITCHEL.COM

TRUMARKHOMES

This is not an offer to sell but is intended for information only. Trumark Homes reserves the right to make modifications to materials, specifications, brand names, appliances, fixtures, plans, pricing, various fees, designs, scheduling, and delivery of homes without prior notice. Square footages are approximate. Plans and dimensions may contain minor variations from floor to floor. Floor plans are for representational purposes only. Homes shown do not represent actual homesites. Rendering and photographs are artists' conceptions and do not reflect actual homesites. Models do not display racial preference. Updated 03/27/2025. 🏡

5844 Kilbeggin Road

TIMNATH, CO 80547

GET IN TOUCH
(970) 499-8222

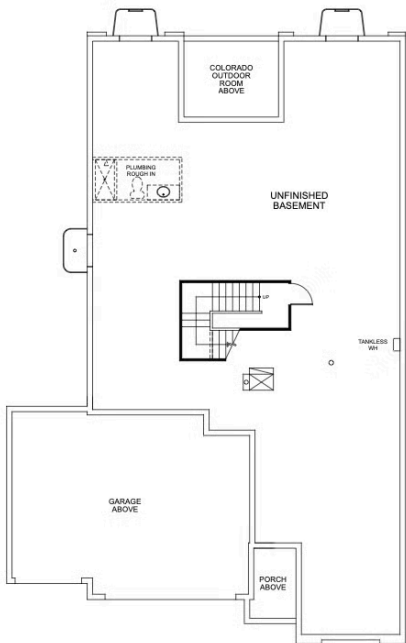


PLAN 2

3 – 4 Bedrooms • 2.5 – 3.5 Baths • 3-Car Garage
Approx. 2,228 – 3,184 Finished Sq. Ft.



FIRST FLOOR



BASEMENT

970.450.5504 | KitchelLakeSales@trumarkco.com | 1432 Alyssa Drive, Timnath, CO 80547 | VIP-KITCHEL.COM

TRUMARKHOMES

This is not an offer to sell but is intended for information only. Trumark Homes reserves the right to make modifications to materials, specifications, brand names, appliances, fixtures, plans, pricing, various fees, designs, scheduling, and delivery of homes without prior notice. Square footages are approximate. Plans and dimensions may contain minor variations from floor to floor. Floor plans are for representational purposes only. Homes shown do not represent actual homesites. Rendering and photographs are artists' conceptions and do not reflect actual homesites. Models do not display racial preference. Updated 03/27/2025.



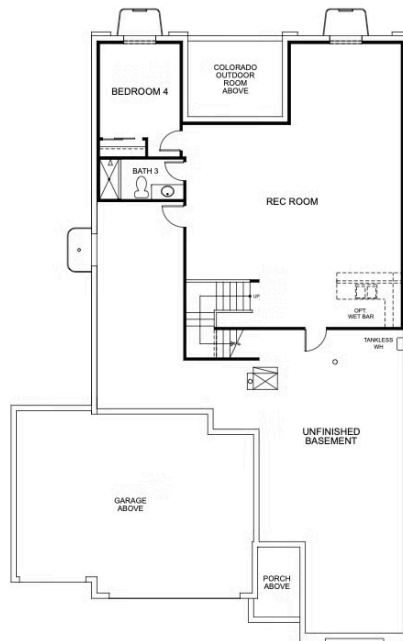
5844 Kilbeggin Road

TIMNATH, CO 80547



PLAN 2 - BASEMENT OPTIONS

3 – 4 Bedrooms • 2.5 – 3.5 Baths • 3-Car Garage
Approx. 2,228 – 3,184 Finished Sq. Ft.



OPTIONAL FINISHED BASEMENT

970.450.5504 | KitchelLakeSales@trumarkco.com | 1432 Alyssa Drive, Timnath, CO 80547 | VIP-KITCHEL.COM

TRUMARKHOMES

This is not an offer to sell but is intended for information only. Trumark Homes reserves the right to make modifications to materials, specifications, brand names, appliances, fixtures, plans, pricing, various fees, designs, scheduling, and delivery of homes without prior notice. Square footages are approximate. Plans and dimensions may contain minor variations from floor to floor. Floor plans are for representational purposes only. Homes shown do not represent actual homesites. Rendering and photographs are artists' conceptions and do not reflect actual homesites. Models do not display racial preference. Updated 03/27/2025.