

5835 Gianna Drive

TIMNATH, CO 80547



PRICE

\$799,900

PLAN

Plan 2

LOCATION

Kitchel Lake at Serratoga Falls

FEATURES

-  3 Bedrooms
-  2 Ba, 1 Half Ba
-  2,228 Sq. Ft.
-  3 Car Garage

Homesite 9 at Kitchel Lake is a contemporary single-story home offering 2,228 Sq. Ft. of living space with three bedrooms and two and a half baths and an unfinished basement. The home features an inviting porch with secondary bedrooms and an office just through the entrance hall. Beyond is the gourmet kitchen featuring a spacious walk-in pantry and a center preparation island. This island includes dual sinks and overlooks the dining and great rooms, complete with gas fireplace. The kitchen includes 42" deluxe white cabinetry with matte black hardware, granite countertops with tile backsplash included in the Autumn Plus Package, stainless steel appliance package with a 5-burner gas cooktop, a convection oven, a built-in microwave, and a dishwasher.

The great room opens up to the covered outdoor room. The primary suite, located just off the great room offers a stunning, spa-like bathroom with a walk-in shower and freestanding tub. An expansive walk-in closet completes the primary suite. The home comes with extensive plank laminate flooring in the entry and kitchen, luxurious carpet in bedrooms, deluxe primary shower tile with mosaic tile shower pan, spacious 10-foot ceilings on the main floor and 9-foot ceilings in the unfinished basement, insulated steel garage door, tankless water heater and AC, and much more! Fully landscaped!

5835 Gianna Drive

TIMNATH, CO 80547

KITCHEL LAKE PLAN 2 FLOOR PLAN

KITCHEL LAKE

PLAN 2

3 - 4 Bedrooms • 2.5 - 3.5 Baths • 3-Car Garage
Approx. 2,228 - 3,184 Finished Sq. Ft.

PRELIMINARY



Elevation 2A - Modern Farmhouse




Elevation 2B - Modern Prairie



Elevation 2C - Modern Mountain

TRUMARKHOMES

All information is for reference only. Prices, taxes and specifications subject to change and should be verified by all potential homebuyers. This is not an offer to sell but is intended for information only. The developer reserves the right to make modifications in materials, specifications, plans, pricing, various fees, designs, scheduling and delivery of homes without prior notice. All dimensions and square footages are approximate. Plan and dimensions may contain minor variations from floor to floor. CA DRE license no. 01877720. 

VIP-KITCHEL.COM

KITCHEL LAKE PLAN 2 FLOOR PLAN



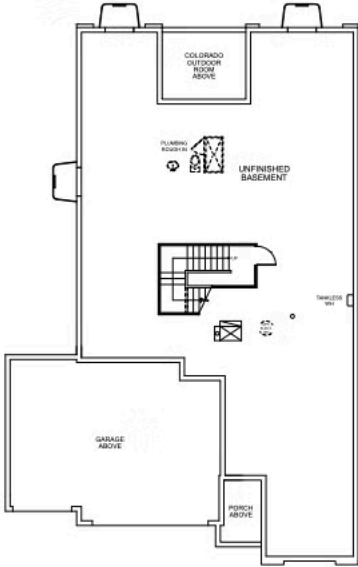
PLAN 2

3 – 4 Bedrooms • 2.5 – 3.5 Baths • 3-Car Garage
Approx. 2,228 – 3,184 Finished Sq. Ft.

PRELIMINARY




FIRST FLOOR



BASEMENT



All information is for reference only. Prices, taxes and specifications subject to change and should be verified by all potential homebuyers. This is not an offer to sell but is intended for information only. The developer reserves the right to make modifications in materials, specifications, plans, pricing, various fees, designs, scheduling and delivery of homes without prior notice. All dimensions and square footages are approximate. Plan and dimensions may contain minor variations from floor to floor. CA DRE license no. 01877720. 

VIP-KITCHEL.COM

KITCHEL LAKE PLAN 2 FLOOR PLAN



PLAN 2 - OPTIONS

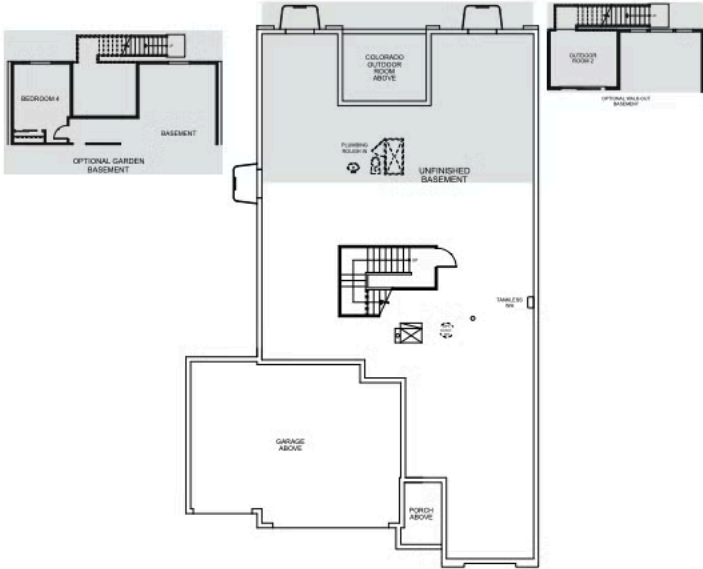
3 - 4 Bedrooms • 2.5 - 3.5 Baths • 3-Car Garage

Approx. 2,228 - 3,184 Finished Sq. Ft.

PRELIMINARY



FIRST FLOOR



BASEMENT

TRUMARK**HOMES**

5835 Gianna Drive

TIMNATH, CO 80547

GET IN TOUCH
(970) 499-8222

KITCHEL LAKE PLAN 2 FLOOR PLAN



TRUMARK**HOMES**

5835 Gianna Drive

TIMNATH, CO 80547

GET IN TOUCH
(970) 499-8222

KITCHEL LAKE PLAN 2 FLOOR PLAN

