

# 5789 Gianna Drive

TIMNATH, CO 80547



## PRICE

**\$903,658**

## PLAN

Plan 2

## LOCATION

Kitchel Lake at Serratoga Falls

## FEATURES

-  4 Bedrooms
-  3.5 Bathrooms
-  3,184 Sq. Ft.
-  3 Car Garage

Hello Sunshine, Hello Home! First Year 2.875% (5.888% APR)\* [Learn More -->](#)

Homesite 6 at Kitchel Lake is a contemporary single-story home with a walkout finished basement and offers 3,184 finished square feet of living space with four bedrooms and three and one-half baths. Upon entering through the inviting front porch you will find an office and two secondary bedrooms. Beyond the entrance hall is the gourmet kitchen featuring 42" maple cabinetry, quartz countertops with tile backsplash, stainless steel appliance package. The spacious great room includes a floor-to-ceiling tiled fireplace and opens up to the covered outdoor room. The primary suite includes a luxurious, spa-like bathroom with dual sinks, walk-in shower and freestanding tub. The finished walkout basement includes an additional bedroom, bathroom and media room. This home features the Diana Plus design finish package with extensive luxury vinyl plank flooring, carpet in bedrooms, contemporary bath fixtures, a tankless water heater, air conditioning, and much more!

This stunning home offers 3,184 finished square feet, featuring 4 bedrooms and 3.5 bathrooms. The finished walkout basement includes a media room along with an additional bedroom and bathroom, providing ample space for entertainment or guests. A gourmet kitchen showcases dusk-colored cabinets with soft-close features and elegant quartz countertops throughout. The spa-like primary bathroom adds a touch of luxury with its freestanding soaking tub, perfect for relaxing at the end of the day.



# 5789 Gianna Drive

TIMNATH, CO 80547



## PLAN 2 - ELEVATIONS

3 – 4 Bedrooms • 2.5 – 3.5 Baths • 3-Car Garage  
Approx. 2,228 – 3,184 Finished Sq. Ft.



Elevation 2A - Modern Farmhouse



Elevation 2B - Modern Prairie



Elevation 2C - Modern Mountain

970.450.5504 | [KitcheLakeSales@trumarkco.com](mailto:KitcheLakeSales@trumarkco.com) | 1432 Alyssa Drive, Timnath, CO 80547 | [VIP-KITCHEL.COM](http://VIP-KITCHEL.COM)

TRUMARKHOMES

This is not an offer to sell but is intended for information only. Trumark Homes reserves the right to make modifications to materials, specifications, brand names, appliances, fixtures, plans, pricing, various fees, designs, scheduling, and delivery of homes without prior notice. Square footages are approximate. Plans and dimensions may contain minor variations from floor to floor. Floor plans are for representational purposes only. Homes shown do not represent actual homesites. Rendering and photographs are artists' conceptions and do not reflect actual homesites. Models do not display racial preference. Updated 03/27/2025. 🏡

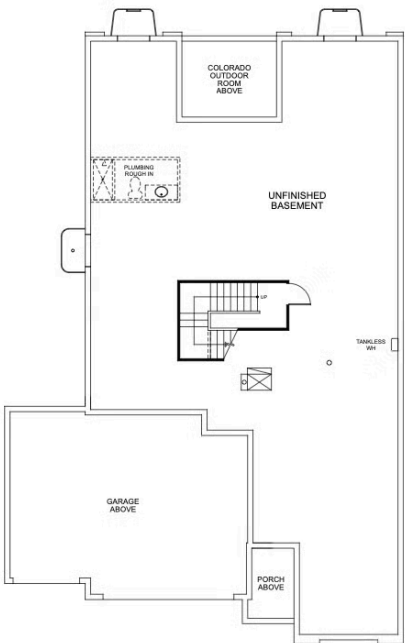


# PLAN 2

3 – 4 Bedrooms • 2.5 – 3.5 Baths • 3-Car Garage  
Approx. 2,228 – 3,184 Finished Sq. Ft.



FIRST FLOOR



BASEMENT

970.450.5504 | KitchelLakeSales@trumarkco.com | 1432 Alyssa Drive, Timnath, CO 80547 | VIP-KITCHEL.COM



This is not an offer to sell but is intended for information only. Trumark Homes reserves the right to make modifications to materials, specifications, brand names, appliances, fixtures, plans, pricing, various fees, designs, scheduling, and delivery of homes without prior notice. Square footages are approximate. Plans and dimensions may contain minor variations from floor to floor. Floor plans are for representational purposes only. Homes shown do not represent actual homesites. Rendering and photographs are artists' conceptions and do not reflect actual homesites. Models do not display racial preference. Updated 03/27/2025.



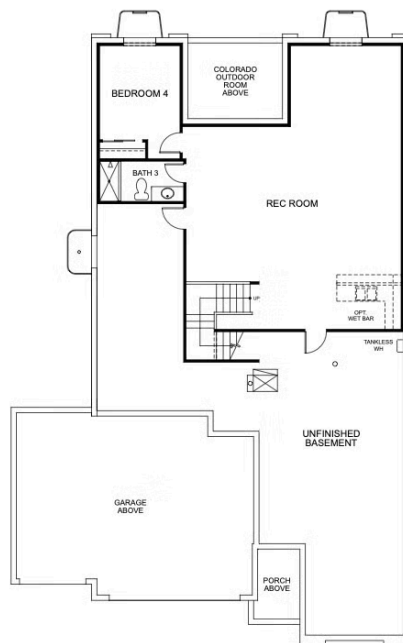
# 5789 Gianna Drive

TIMNATH, CO 80547



## PLAN 2 - BASEMENT OPTIONS

3 – 4 Bedrooms • 2.5 – 3.5 Baths • 3-Car Garage  
Approx. 2,228 – 3,184 Finished Sq. Ft.



OPTIONAL FINISHED BASEMENT

970.450.5504 | KitchelLakeSales@trumarkco.com | 1432 Alyssa Drive, Timnath, CO 80547 | VIP-KITCHEL.COM

TRUMARKHOMES

This is not an offer to sell but is intended for information only. Trumark Homes reserves the right to make modifications to materials, specifications, brand names, appliances, fixtures, plans, pricing, various fees, designs, scheduling, and delivery of homes without prior notice. Square footages are approximate. Plans and dimensions may contain minor variations from floor to floor. Floor plans are for representational purposes only. Homes shown do not represent actual homesites. Rendering and photographs are artists' conceptions and do not reflect actual homesites. Models do not display racial preference. Updated 03/27/2025.