

# 1426 Alyssa Drive

TIMNATH, CO 80547



## PRICE

**\$899,900**

## PLAN

Plan 2

## LOCATION

Kitchel Lake at Serratoga Falls

## FEATURES

 4 Bedrooms

 3 Ba, 1 Half Ba

 3,184 Sq. Ft.

 3 Car Garage

Homesite 2 at Kitchel Lake is a contemporary single-story home offering 3,184 finished square feet of living space. This newly designed floorplan includes a gourmet kitchen with a walk-in pantry, large great room, covered outdoor room, office, and finished basement. This is where modern living and lifestyle come together with a professionally designed finish package including LVP wood-like flooring, a tankless water heater, air conditioning, and much more!!

Key features include Backs to green belt open space, Fully fenced and landscaped back yard, 3,184 finished sq. ft., 3 bedrooms on main floor, 1 bedroom in the finished basement, 2.5 bathrooms on main floor, 1 bathroom in finished basement, Office, Covered patio, Gourmet kitchen with slate cabinets, Quartz countertops throughout, Spa-like primary bath, Finished basement with wet bar, and 3-Car garage.



# 1426 Alyssa Drive

TIMNATH, CO 80547

## KITCHEL LAKE PLAN 2 FLOOR PLAN

KITCHEL LAKE

### PLAN 2

3 - 4 Bedrooms • 2.5 - 3.5 Baths • 3-Car Garage  
Approx. 2,228 - 3,184 Finished Sq. Ft.

PRELIMINARY



Elevation 2A - Modern Farmhouse




Elevation 2B - Modern Prairie



Elevation 2C - Modern Mountain

TRUMARKHOMES

All information is for reference only. Prices, taxes and specifications subject to change and should be verified by all potential homebuyers. This is not an offer to sell but is intended for information only. The developer reserves the right to make modifications in materials, specifications, plans, pricing, various fees, designs, scheduling and delivery of homes without prior notice. All dimensions and square footages are approximate. Plan and dimensions may contain minor variations from floor to floor. CA DRE license no. 01877720. 

[VIP-KITCHEL.COM](http://VIP-KITCHEL.COM)

# 1426 Alyssa Drive

TIMNATH, CO 80547

## KITCHEL LAKE PLAN 2 FLOOR PLAN

KITCHEL LAKE

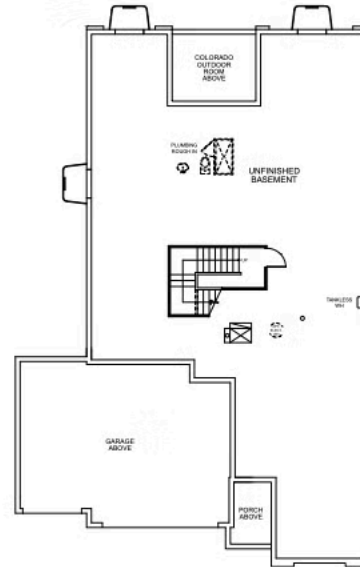
### PLAN 2

3 - 4 Bedrooms • 2.5 - 3.5 Baths • 3-Car Garage  
Approx. 2,228 - 3,184 Finished Sq. Ft.

PRELIMINARY




FIRST FLOOR



BASEMENT

TRUMARKHOMES

All information is for reference only. Prices, taxes and specifications subject to change and should be verified by all potential homebuyers. This is not an offer to sell but is intended for information only. The developer reserves the right to make modifications in materials, specifications, plans, pricing, various fees, designs, scheduling and delivery of homes without prior notice. All dimensions and square footages are approximate. Plan and dimensions may contain minor variations from floor to floor. CA DRE license no. 01877720. 

[VIP-KITCHEL.COM](http://VIP-KITCHEL.COM)



# 1426 Alyssa Drive

TIMNATH, CO 80547

## KITCHEL LAKE PLAN 2 FLOOR PLAN

KITCHEL LAKE

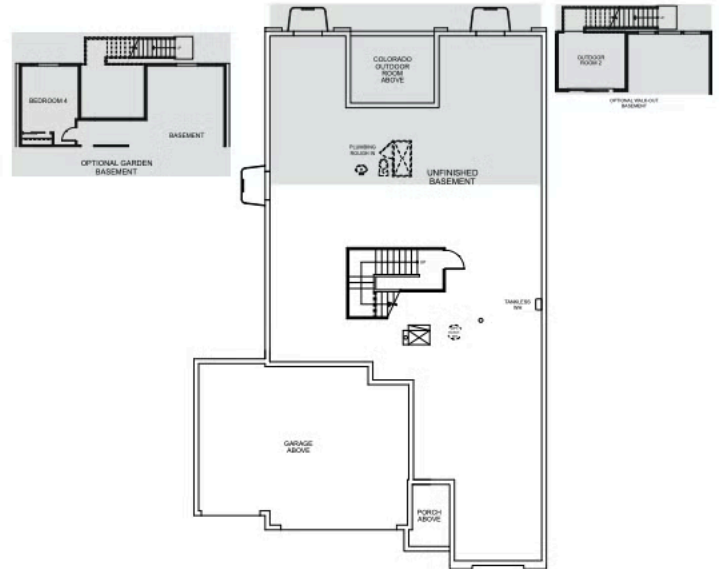
### PLAN 2 - OPTIONS

3 - 4 Bedrooms • 2.5 - 3.5 Baths • 3-Car Garage  
Approx. 2,228 - 3,184 Finished Sq. Ft.

PRELIMINARY




FIRST FLOOR



BASEMENT

TRUMARKHOMES

All information is for reference only. Prices, taxes and specifications subject to change and should be verified by all potential homebuyers. This is not an offer to sell but is intended for information only. The developer reserves the right to make modifications in materials, specifications, plans, pricing, various fees, designs, scheduling and delivery of homes without prior notice. All dimensions and square footages are approximate. Plan and dimensions may contain minor variations from floor to floor. CA DRE license no. 01877720. 

[VIP-KITCHEL.COM](http://VIP-KITCHEL.COM)

TRUMARKHOMES

1426 Alyssa Drive

TIMNATH, CO 80547

GET IN TOUCH  
(970) 499-8222

KITCHEL LAKE PLAN 2 FLOOR PLAN



TRUMARKHOMES

1426 Alyssa Drive

TIMNATH, CO 80547

GET IN TOUCH  
(970) 499-8222

KITCHEL LAKE PLAN 2 FLOOR PLAN



TRUMARK**HOMES**

**1426 Alyssa Drive**

TIMNATH, CO 80547

GET IN TOUCH  
**(970) 499-8222**



TRUMARKHOMES

**1426 Alyssa Drive**

TIMNATH, CO 80547

GET IN TOUCH  
**(970) 499-8222**



TRUMARK**HOMES**

**1426 Alyssa Drive**

TIMNATH, CO 80547

GET IN TOUCH  
**(970) 499-8222**

