

5856 Kilbeggin Road

TIMNATH, CO 80547



PRICE

\$835,598

PLAN

Plan 1

LOCATION

Kitchel Lake at Serratoga Falls

FEATURES

-  4 Bedrooms
-  3.5 Bathrooms
-  2,956 Sq. Ft.
-  3 Car Garage

This is your moment! First Year 3.25% (6.535% APR)* [Learn More ->](#)

Homesite 5 at Kitchel Lake is an open floor plan single-story home with a finished basement offering 2,956 Sq. Ft. of living space with four bedrooms, three and a half baths, and an inviting front porch. One of the secondary bedrooms can be used as a second office/flex room space. Past the entrance hall is the gourmet kitchen, featuring a spacious walk-in pantry and a center preparation island. The island overlooks the dining and great rooms with a gas fireplace. The kitchen includes 42" deluxe white cabinetry, light quartz countertops with tile backsplash, matte black finishes, a stainless steel appliance package with a 5-burner gas cooktop, a convection oven, a built-in microwave, and a dishwasher.

The great room opens up to the covered outdoor room. The primary suite, located just off the great room, offers a contemporary, spa-like bathroom with dual sinks, a walk-in shower, and a freestanding tub. An expansive walk-in closet completes the primary suite. The home comes with light 5" plank LVP flooring in the entry and kitchen, luxurious carpet in bedrooms, deluxe primary shower tile with mosaic tile shower pan, spacious 10-foot ceilings, laundry base cabinets with sink, insulated steel garage door, tankless water heater and AC, and much more!

5856 Kilbeggin Road

TIMNATH, CO 80547



PLAN 1 - ELEVATIONS

3 – 5 Bedrooms • 2.5 – 3.5 Baths • 3-Car Garage
Approx. 2,016 - 3,200 Finished Sq. Ft.



Elevation 1A - Modern Farmhouse



Elevation 1B - Modern Prairie



Elevation 1C - Modern Mountain

970.450.5504 | KitcheLakeSales@trumarkco.com | 1432 Alyssa Drive, Timnath, CO 80547 | VIP-KITCHEL.COM

TRUMARKHOMES

This is not an offer to sell but is intended for information only. Trumark Homes reserves the right to make modifications to materials, specifications, brand names, appliances, fixtures, plans, pricing, various fees, designs, scheduling, and delivery of homes without prior notice. Square footages are approximate. Plans and dimensions may contain minor variations from floor to floor. Floor plans are for representational purposes only. Homes shown do not represent actual homesites. Rendering and photographs are artists' conceptions and do not reflect actual homesites. Models do not display racial preference. Updated 03/27/2025.

5856 Kilbeggin Road

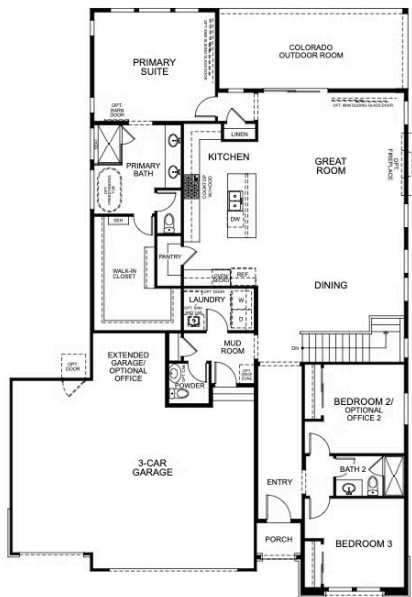
TIMNATH, CO 80547

GET IN TOUCH
(970) 499-8222

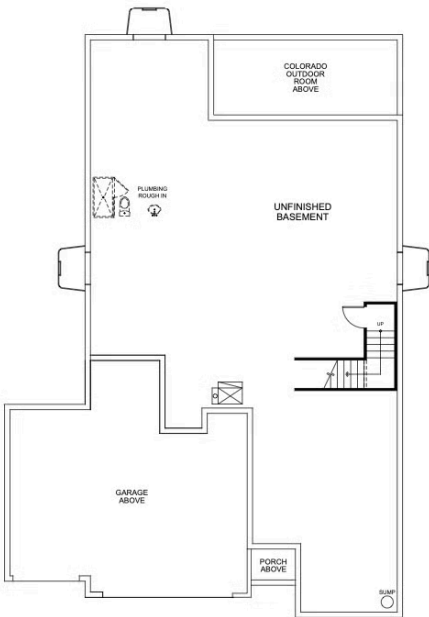


PLAN 1

3 – 5 Bedrooms • 2.5 – 3.5 Baths • 3-Car Garage
Approx. 2,016 - 3,200 Finished Sq. Ft.



FIRST FLOOR



BASEMENT

970.450.5504 | KitchelLakeSales@trumarkco.com | 1432 Alyssa Drive, Timnath, CO 80547 | VIP-KITCHEL.COM

TRUMARKHOMES

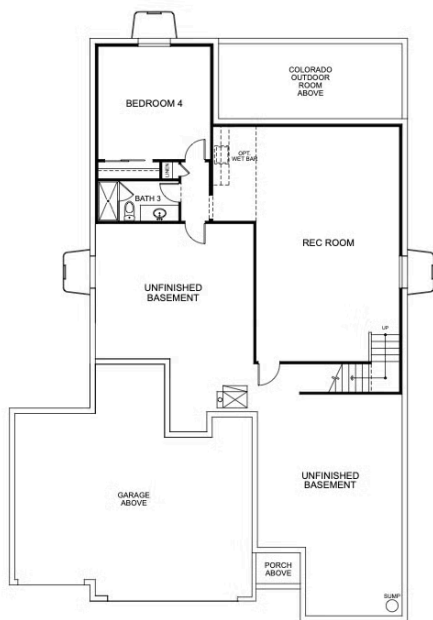
This is not an offer to sell but is intended for information only. Trumark Homes reserves the right to make modifications to materials, specifications, brand names, appliances, fixtures, plans, pricing, various fees, designs, scheduling, and delivery of homes without prior notice. Square footages are approximate. Plans and dimensions may contain minor variations from floor to floor. Floor plans are for representational purposes only. Homes shown do not represent actual homesites. Rendering and photographs are artists' conceptions and do not reflect actual homesites. Models do not display racial preference. Updated 03/27/2025.



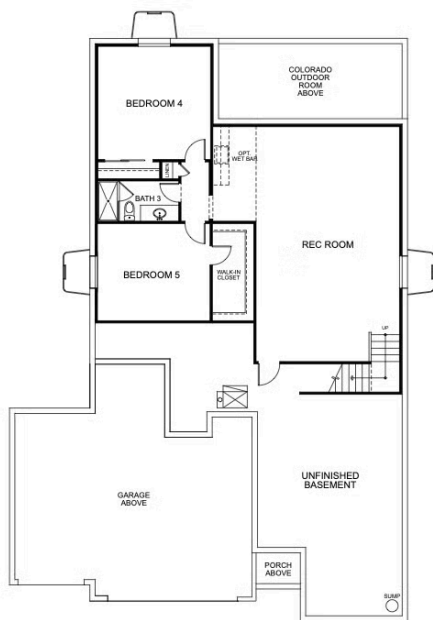


PLAN 1 - BASEMENT OPTIONS

3 – 5 Bedrooms • 2.5 – 3.5 Baths • 3-Car Garage
Approx. 2,016 - 3,200 Finished Sq. Ft.



OPTIONAL FINISHED BASEMENT



OPTIONAL FINISHED BASEMENT
WITH BEDROOM 5

970.450.5504 | KitchelLakeSales@trumarkco.com | 1432 Alyssa Drive, Timnath, CO 80547 | VIP-KITCHEL.COM



This is not an offer to sell but is intended for information only. Trumark Homes reserves the right to make modifications to materials, specifications, brand names, appliances, fixtures, plans, pricing, various fees, designs, scheduling, and delivery of homes without prior notice. Square footages are approximate. Plans and dimensions may contain minor variations from floor to floor. Floor plans are for representational purposes only. Homes shown do not represent actual homesites. Rendering and photographs are artists' conceptions and do not reflect actual homesites. Models do not display racial preference. Updated 03/27/2025.