

5841 Gianna Drive

TIMNATH, CO 80547



PRICE
\$817,242

PLAN
Plan 1

LOCATION
Kitchel Lake at Serratoga Falls

FEATURES

-  3 Bedrooms
-  2.5 Bathrooms
-  2,016 Sq. Ft.
-  3 Car Garage

Homesite 10 at Kitchel Lake is a flexible single-story home offering up to 2,956 Sq. Ft. of living space with three bedrooms and two and a half baths. The home features an inviting porch with secondary bedrooms and an ensuite bathroom off the front of the home. One of these bedrooms can be replaced with a second office/flex room space. Past the entrance hall is the gourmet kitchen, featuring a spacious walk-in pantry and a center preparation island. The island overlooks the dining and great rooms with an optional gas fireplace. The kitchen includes 42" deluxe dark cabinetry, light quartz countertops with tile backsplash, stainless steel appliance package with a 5-burner gas cooktop, a convection oven, a built-in microwave, and a dishwasher.

The great room opens up to the covered outdoor room. The primary suite, located just off the great room offers a contemporary, spa-like bathroom with dual sinks, a walk-in shower, and an optional freestanding tub. An expansive walk-in closet completes the primary suite. The home comes with light 5" plank engineered hardwood flooring in the entry and kitchen, luxurious carpet in bedrooms, deluxe primary shower tile with mosaic tile shower pan, spacious 9 or 10-foot ceilings, insulated steel garage door, tankless water heater and AC, and much more!

5841 Gianna Drive

TIMNATH, CO 80547

KITCHEL LAKE PLAN 1 FLOOR PLAN



PLAN 1

3 - 4 Bedrooms • 2.5 - 3.5 Baths • 3-Car Garage
Approx. 2,016 - 2,956 Finished Sq. Ft.

PRELIMINARY



Elevation 1A - Modern Farmhouse



Elevation 1B - Modern Prairie



Elevation 1C - Modern Mountain

TRUMARK HOMES

All information is for reference only. Prices, taxes and specifications subject to change and should be verified by all potential homebuyers. This is not an offer to sell but is intended for information only. The developer reserves the right to make modifications in materials, specifications, plans, pricing, various fees, designs, scheduling and delivery of homes without prior notice. All dimensions and square footages are approximate. Plan and dimensions may contain minor variations from floor to floor. CA DRE license no. 01877720.

VIP-KITCHEL.COM

5841 Gianna Drive

TIMNATH, CO 80547

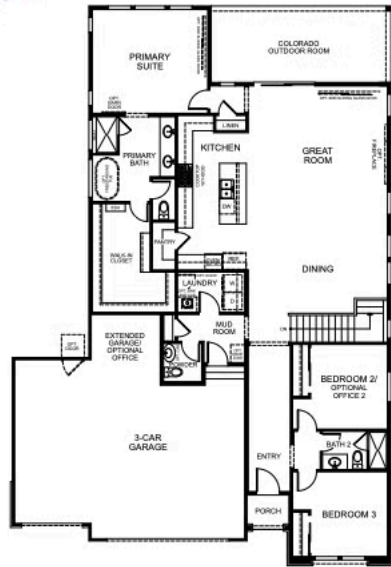
KITCHEL LAKE PLAN 1 FLOOR PLAN



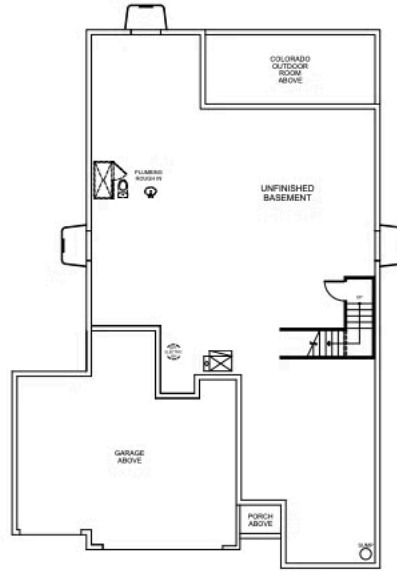
PLAN 1

3 - 4 Bedrooms • 2.5 - 3.5 Baths • 3-Car Garage
Approx. 2,016 - 2,956 Finished Sq. Ft.

PRELIMINARY



FIRST FLOOR



BASEMENT



All information is for reference only. Prices, taxes and specifications subject to change and should be verified by all potential homebuyers. This is not an offer to sell but is intended for information only. The developer reserves the right to make modifications in materials, specifications, plans, pricing, various fees, designs, scheduling and delivery of homes without prior notice. All dimensions and square footages are approximate. Plan and dimensions may contain minor variations from floor to floor. CA DRE license no. 01877720.

VIP-KITCHEL.COM



5841 Gianna Drive

TIMNATH, CO 80547

KITCHEL LAKE PLAN 1 FLOOR PLAN



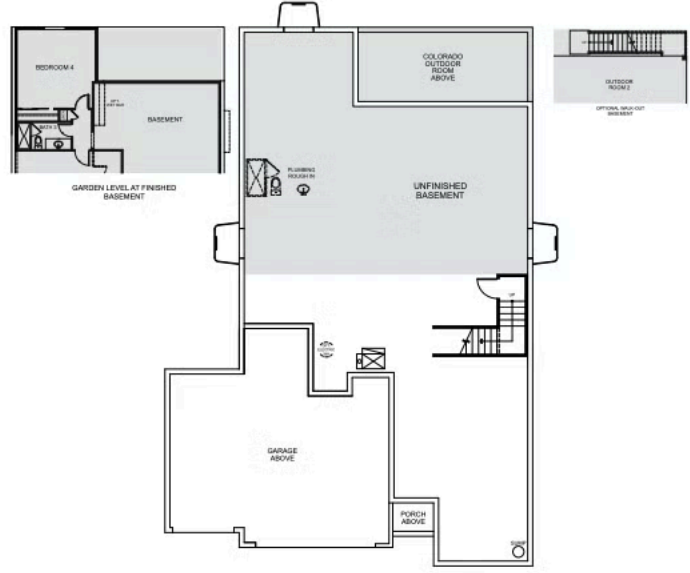
PLAN 1 - OPTIONS

3 - 4 Bedrooms • 2.5 - 3.5 Baths • 3-Car Garage
Approx. 2,016 - 2,956 Finished Sq. Ft.

PRELIMINARY



FIRST FLOOR



BASEMENT



All information is for reference only. Prices, taxes and specifications subject to change and should be verified by all potential homebuyers. This is not an offer to sell but is intended for information only. The developer reserves the right to make modifications in materials, specifications, plans, pricing, various fees, designs, scheduling and delivery of homes without prior notice. All dimensions and square footages are approximate. Plan and dimensions may contain minor variations from floor to floor. CA DRE license no. 01877720.

VIP-KITCHEL.COM



TRUMARK**HOMES**

5841 Gianna Drive

TIMNATH, CO 80547

GET IN TOUCH
(970) 499-8222

KITCHEL LAKE PLAN 1 FLOOR PLAN



TRUMARK**HOMES**

5841 Gianna Drive

TIMNATH, CO 80547

GET IN TOUCH
(970) 499-8222

KITCHEL LAKE PLAN 1 FLOOR PLAN

