

1374 Weller Ct

TIMNATH, CO 80547



PRICE
\$904,958

PLAN
Plan 1

LOCATION
Kitchel Lake at Serratoga Falls

FEATURES

-  4 Bedrooms
-  3 Ba, 1 Half Ba
-  3,200 Sq. Ft.
-  3 Car Garage

Homesite 6 at Kitchel Lake is a modern single-story home offering 3,200 finished square feet of living space. Upon entering the front door you will find a secondary bedroom with bath, convenient for those overnight guests. Down the hall is a main floor office perfect for those online calls or working from home tasks. This newly designed ranch floorplan includes a gourmet kitchen with walk-in pantry, 42" deluxe cabinetry with soft close features, quartz countertops with tile backsplash, stainless steel appliance package with 5-burner gas cooktop, convection oven, built-in microwave and dishwasher. The kitchen is open and connects to the dining area and large great room with tiled fireplace. Off the great room is the spacious covered outdoor room.

Proceed downstairs to find the walkout finished basement with media/rec room and two bedrooms and bath. This home features the Diana plus professionally designed finish package with extensive LVP wood-like flooring, luxurious carpet in bedrooms and recroom, a tankless water heater, air conditioning and much more!

Key Features include cul-de-sac lot backing to open space, 3,200 finished sq. ft., walkout finished basement, main floor office, 2 bedrooms on main floor, 2 bedrooms in finished basement, 2.5 bathrooms on main floor, 1 bathroom in finished basement, kitchen with white cabinets, Quartz countertops throughout, tiled fireplace at great room, freestanding tub at primary bath, extended 3-Car garage.

1374 Weller Ct

TIMNATH, CO 80547



PLAN 1 - ELEVATIONS

3 – 5 Bedrooms · 2.5 – 3.5 Baths · 3-Car Garage
Approx. 2,016 - 3,200 Finished Sq. Ft.



Elevation 1A - Modern Farmhouse



Elevation 1B - Modern Prairie



Elevation 1C - Modern Mountain

970.450.5504 | KitcheLakeSales@trumarkco.com | 1432 Alyssa Drive, Timnath, CO 80547 | VIP-KITCHEL.COM



This is not an offer to sell but is intended for information only. Trumark Homes reserves the right to make modifications to materials, specifications, brand names, appliances, fixtures, plans, pricing, various fees, designs, scheduling, and delivery of homes without prior notice. Square footages are approximate. Plans and dimensions may contain minor variations from floor to floor. Floor plans are for representational purposes only. Homes shown do not represent actual homesites. Rendering and photographs are artists' conceptions and do not reflect actual homesites. Models do not display racial preference. Updated 03/27/2025. 🏠

1374 Weller Ct

TIMNATH, CO 80547

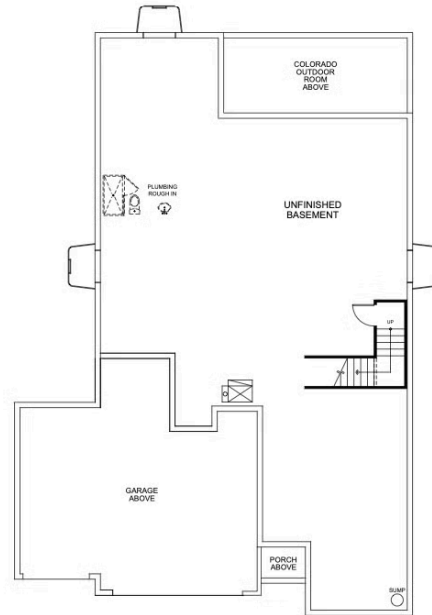


PLAN 1

3 - 5 Bedrooms · 2.5 - 3.5 Baths · 3-Car Garage
Approx. 2,016 - 3,200 Finished Sq. Ft.



FIRST FLOOR



BASEMENT

970.450.5504 | KitcheLakeSales@trumarkco.com | 1432 Alyssa Drive, Timnath, CO 80547 | VIP-KITCHEL.COM



This is not an offer to sell but is intended for information only. Trumark Homes reserves the right to make modifications to materials, specifications, brand names, appliances, fixtures, plans, pricing, various fees, designs, scheduling, and delivery of homes without prior notice. Square footages are approximate. Plans and dimensions may contain minor variations from floor to floor. Floor plans are for representational purposes only. Homes shown do not represent actual homesites. Rendering and photographs are artists' conceptions and do not reflect actual homesites. Models do not display racial preference. Updated 03/27/2025.

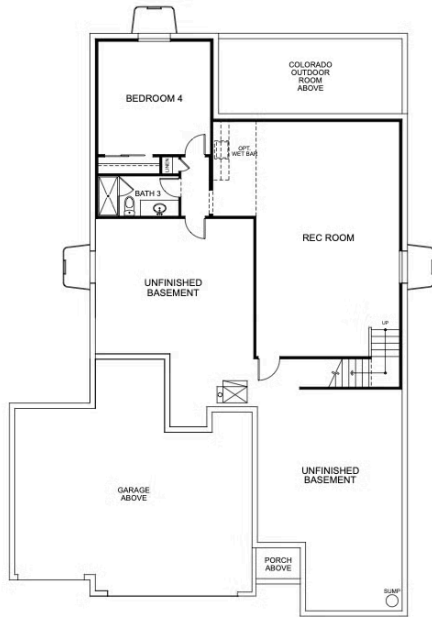
1374 Weller Ct

TIMNATH, CO 80547



PLAN 1 - BASEMENT OPTIONS

3 - 5 Bedrooms · 2.5 - 3.5 Baths · 3-Car Garage
Approx. 2,016 - 3,200 Finished Sq. Ft.



OPTIONAL FINISHED BASEMENT



OPTIONAL FINISHED BASEMENT
WITH BEDROOM 5

970.450.5504 | KitcheLakeSales@trumarkco.com | 1432 Alyssa Drive, Timnath, CO 80547 | VIP-KITCHEL.COM



This is not an offer to sell but is intended for information only. Trumark Homes reserves the right to make modifications to materials, specifications, brand names, appliances, fixtures, plans, pricing, various fees, designs, scheduling, and delivery of homes without prior notice. Square footages are approximate. Plans and dimensions may contain minor variations from floor to floor. Floor plans are for representational purposes only. Homes shown do not represent actual homesites. Rendering and photographs are artists' conceptions and do not reflect actual homesites. Models do not display racial preference. Updated 03/27/2025.

