

1296 Weller Street

TIMNATH, CO 80547



PRICE

\$899,900

PLAN

Plan 1

LOCATION

Kitchel Lake at Serratoga Falls

FEATURES

-  4 Bedrooms
-  3 Ba, 1 Half Ba
-  3,040 Sq. Ft.
-  3 Car Garage

Homesite 1 at Kitchel Lake is a modern single-story home offering 3,040 finished square feet of living space with 4 bedrooms, 3.5 bathrooms and a walkout finished basement. This newly designed floorplan includes a gourmet kitchen with white cabinets, quartz countertops, walk-in pantry, large great room with tiled fireplace from floor to ceiling, and covered outdoor room. Backing to open space as well as an open tract on the side, this is where modern living and lifestyle come together with a professionally designed finish package including LVP woodlike flooring, a tankless water heater, air conditioning, extended 3-car garage and much more!

1296 Weller Street

TIMNATH, CO 80547



PLAN 1 - ELEVATIONS

3 – 5 Bedrooms • 2.5 – 3.5 Baths • 3-Car Garage
Approx. 2,016 - 3,200 Finished Sq. Ft.



Elevation 1A - Modern Farmhouse



Elevation 1B - Modern Prairie



Elevation 1C - Modern Mountain

970.450.5504 | KitcheLakeSales@trumarkco.com | 1432 Alyssa Drive, Timnath, CO 80547 | VIP-KITCHEL.COM

TRUMARKHOMES

This is not an offer to sell but is intended for information only. Trumark Homes reserves the right to make modifications to materials, specifications, brand names, appliances, fixtures, plans, pricing, various fees, designs, scheduling, and delivery of homes without prior notice. Square footages are approximate. Plans and dimensions may contain minor variations from floor to floor. Floor plans are for representational purposes only. Homes shown do not represent actual homesites. Rendering and photographs are artists' conceptions and do not reflect actual homesites. Models do not display racial preference. Updated 03/27/2025. 🏠

1296 Weller Street

TIMNATH, CO 80547

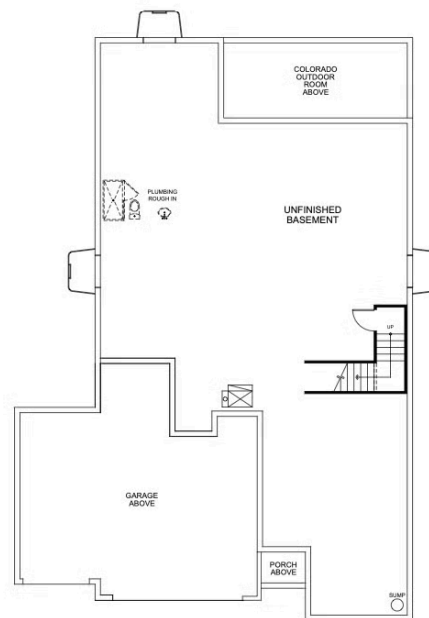


PLAN 1

3 – 5 Bedrooms • 2.5 – 3.5 Baths • 3-Car Garage
Approx. 2,016 - 3,200 Finished Sq. Ft.



FIRST FLOOR



BASEMENT

970.450.5504 | KitchelLakeSales@trumarkco.com | 1432 Alyssa Drive, Timnath, CO 80547 | VIP-KITCHEL.COM

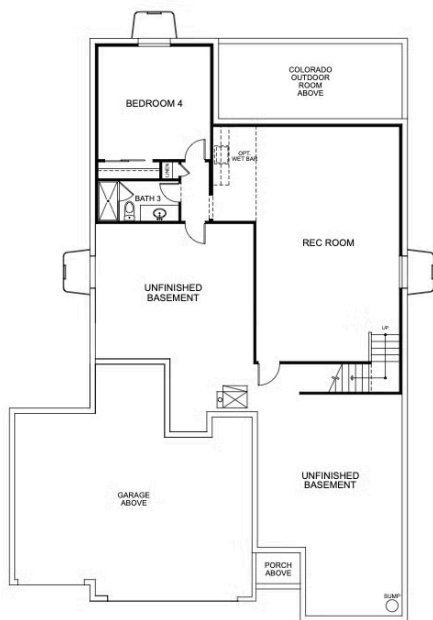
TRUMARKHOMES

This is not an offer to sell but is intended for information only. Trumark Homes reserves the right to make modifications to materials, specifications, brand names, appliances, fixtures, plans, pricing, various fees, designs, scheduling, and delivery of homes without prior notice. Square footages are approximate. Plans and dimensions may contain minor variations from floor to floor. Floor plans are for representational purposes only. Homes shown do not represent actual homesites. Rendering and photographs are artists' conceptions and do not reflect actual homesites. Models do not display racial preference. Updated 03/27/2025.

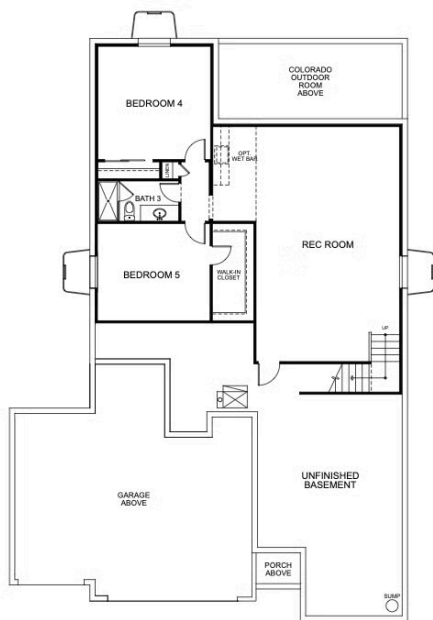


PLAN 1 - BASEMENT OPTIONS

3 – 5 Bedrooms • 2.5 – 3.5 Baths • 3-Car Garage
Approx. 2,016 - 3,200 Finished Sq. Ft.



OPTIONAL FINISHED BASEMENT



OPTIONAL FINISHED BASEMENT
WITH BEDROOM 5

970.450.5504 | KitchelLakeSales@trumarkco.com | 1432 Alyssa Drive, Timnath, CO 80547 | VIP-KITCHEL.COM

TRUMARKHOMES

This is not an offer to sell but is intended for information only. Trumark Homes reserves the right to make modifications to materials, specifications, brand names, appliances, fixtures, plans, pricing, various fees, designs, scheduling, and delivery of homes without prior notice. Square footages are approximate. Plans and dimensions may contain minor variations from floor to floor. Floor plans are for representational purposes only. Homes shown do not represent actual homesites. Rendering and photographs are artists' conceptions and do not reflect actual homesites. Models do not display racial preference. Updated 03/27/2025.