

8662 Whiteclover Street

LITTLETON, CO 80125



PRICE

\$834,898

PLAN

Plan 6

LOCATION

Harmony at Sterling Ranch

FEATURES

-  5 Bedrooms
-  4 Ba, 1 Half Ba
-  2,831 Sq. Ft.
-  2 Car Garage

Welcome to homesite 225 of the Harmony Collection at Sterling Ranch. This Plan 6 single-family home offers approximately 2,831 finished square feet of well-designed living space, ideal for modern living and flexibility. The thoughtfully crafted floorplan features a main-floor bedroom suite with a private bath, a 42" fireplace in the great room, an upstairs loft, and an unfinished basement ready for future expansion. Finished with the Jocelyn II design package, the home includes LVP wood-style flooring, a tankless water heater, a gas line to the range, air conditioning, and more—bringing lifestyle and comfort together in perfect harmony.

This move-in-ready home showcases a Modern Prairie elevation and offers five bedrooms, including the main-floor suite, four and a half bathrooms, and an unfinished basement with rough-in plumbing for a future bath. The spacious kitchen features white cabinetry, quartz countertops, and stainless steel appliances, while the large covered outdoor deck provides the perfect space for relaxing or entertaining. Ideally located near a new park and trail system, this home truly has it all. Come tour your future home today!

PLAN 6: 2831 MAIN & SECOND FLOOR

HARMONY
COLLECTION

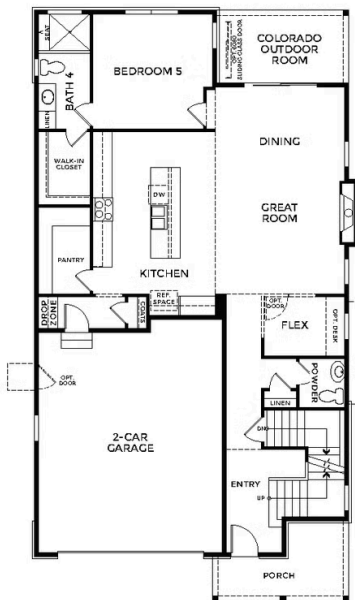
PLAN 6

5 Bedrooms • 4.5 Baths • Flex Room • Loft • 2-Car Garage
Approx. 2,831 Finished Sq. Ft.



STERLING RANCH™
COLORADO

PRELIMINARY



FIRST FLOOR



SECOND FLOOR

Preliminary and subject to change. 720.802.6221 | SterlingRanchSales@trumarkco.com | 7046 Watercress Drive, Littleton CO | VIP-STERLINGRANCH.COM

TRUMARKHOMES

All information is for reference only. Prices, taxes and specifications subject to change and should be verified by all potential homebuyers. This is not an offer to sell but is intended for information only. The developer reserves the right to make modifications in materials, specifications, plans, pricing, various fees, designs, scheduling and delivery of homes without prior notice. All dimensions and square footages are approximate. Plan and dimensions may contain minor variations from floor to floor. CA DRE license no. 01877720. 🏠



8662 Whiteclover Street

LITTLETON, CO 80125

PLAN 6: 2831 OPTIONS

HARMONY COLLECTION

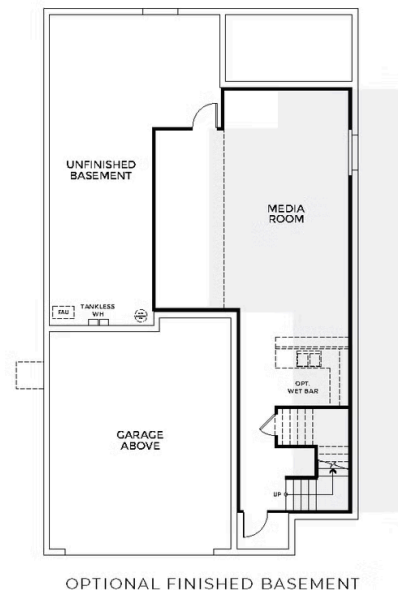
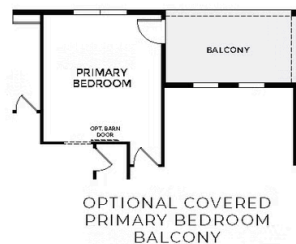
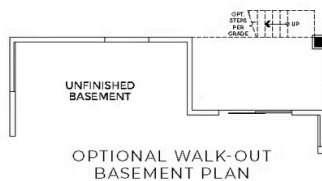
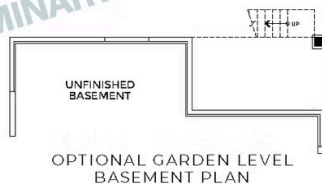
PLAN 6 - OPTIONS

5 Bedrooms • 4.5 Baths • Flex Room • Loft • 2-Car Garage
Approx. 2,831 Finished Sq. Ft.



STERLING RANCH™
COLORADO

PRELIMINARY



Preliminary and subject to change.

720.802.6221 | SterlingRanchSales@trumarkco.com | 7046 Watercress Drive, Littleton CO | VIP-STERLINGRANCH.COM

TRUMARKHOMES

All information is for reference only. Prices, taxes and specifications subject to change and should be verified by all potential homebuyers. This is not an offer to sell but is intended for information only. The developer reserves the right to make modifications in materials, specifications, plans, pricing, various fees, designs, scheduling and delivery of homes without prior notice. All dimensions and square footages are approximate. Plan and dimensions may contain minor variations from floor to floor. CA DRE license no. 01877720.

PLAN 6: 2831 OPTIONAL FINISHED BASEMENT

HARMONY
COLLECTION

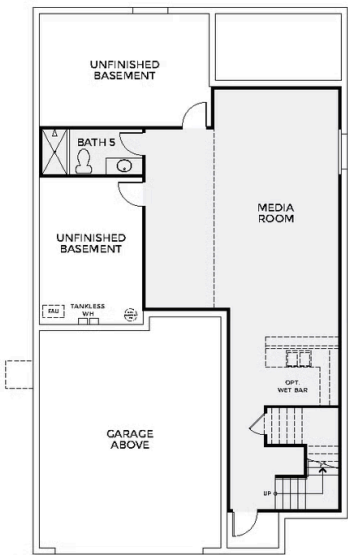
PLAN 6 - OPTIONS

5 Bedrooms • 4.5 Baths • Flex Room • Loft • 2-Car Garage
Approx. 2,831 Finished Sq. Ft.

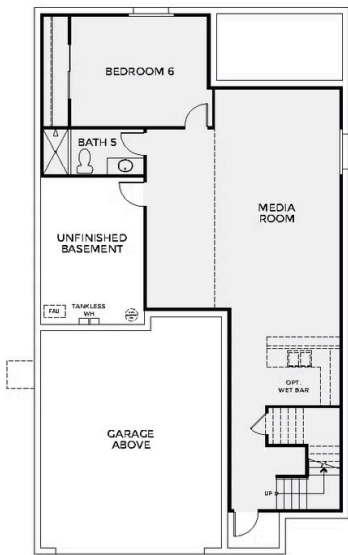


STERLING RANCH™
COLORADO

PRELIMINARY



OPTIONAL FINISHED BASEMENT 2



OPTIONAL FINISHED BASEMENT 3

Preliminary and subject to change. 720.802.6221 | SterlingRanchSales@trumarkco.com | 7046 Watercress Drive, Littleton CO | VIP-STERLINGRANCH.COM

TRUMARKHOMES

All information is for reference only. Prices, taxes and specifications subject to change and should be verified by all potential homebuyers. This is not an offer to sell but is intended for information only. The developer reserves the right to make modifications in materials, specifications, plans, pricing, various fees, designs, scheduling and delivery of homes without prior notice. All dimensions and square footages are approximate. Plan and dimensions may contain minor variations from floor to floor. CA DRE license no. 01877720. 🏠